



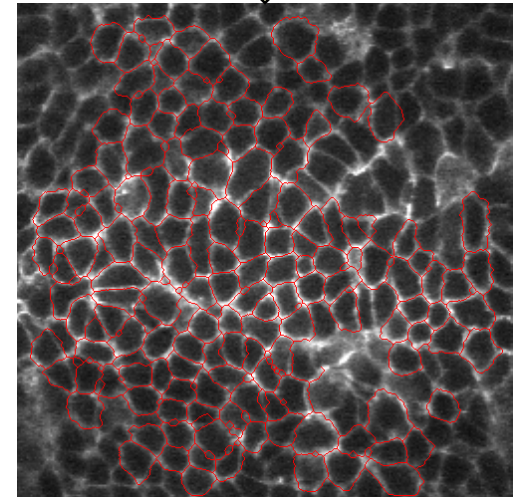
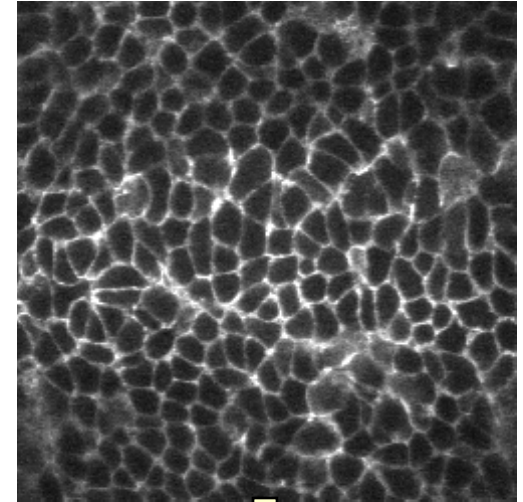
Optical Microscopy and Image Analysis at the National Cancer Institute - Frederick with emphasis on validation

Dr. Stephen Lockett

Optical Microscopy and Analysis Laboratory
National Cancer Institute – Frederick / SAIC
National Institutes of Health

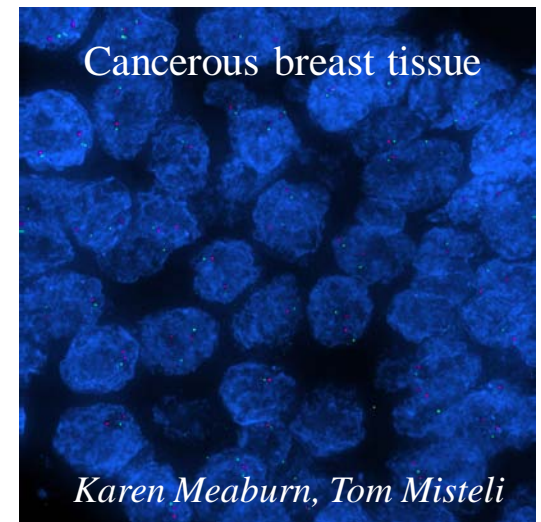
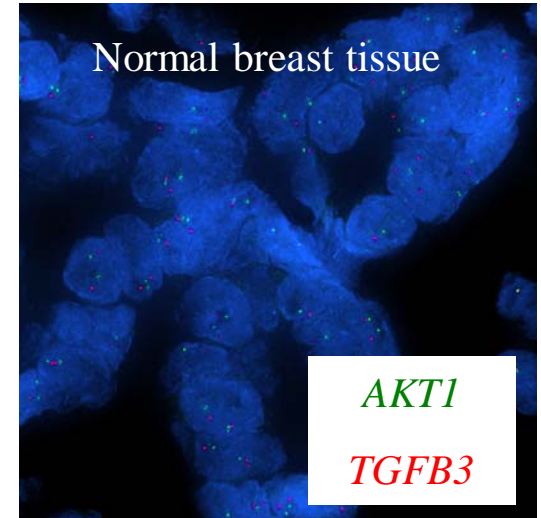
Single Cell Analysis in Tissue

- Altered cell-cell communication in tissue underlies carcinogenesis of solid tumors.
- Thus understanding cancer mechanisms requires analysis at the individual cell level, while cells remain in their tissue context
- *Efficient, interactive tools for whole cell segmentation (2D and 3D).*
- *Automatic tools for nuclear segmentation (3D). Altered cell-cell communication in tissue underlies carcinogenesis of solid tumors.*
- *Software available for licensing, not patented*

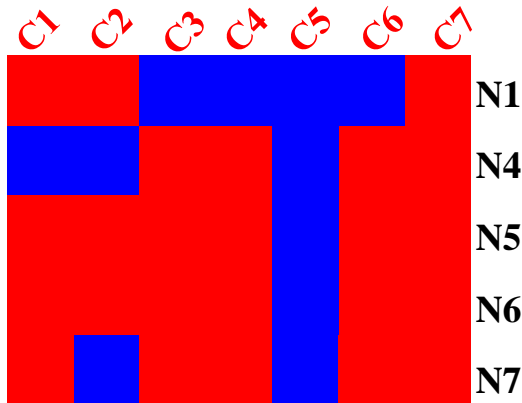
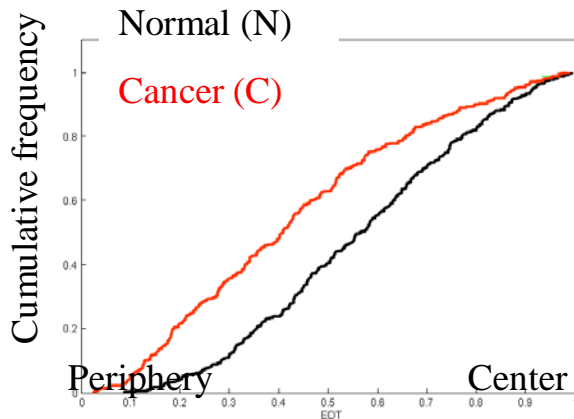


Gene Position Analysis in Breast Cancer

- ⊕ Certain genes position differently in the interphase nuclei of cancer cells versus normal cells. Cannot detect the differences visually
- ⊕ Requirements: (1) analysis of individual cell nuclei; (2) automation



AKT1



Commercial Applications

- ❖ Improvements over existing methods:
 - (1) Quantitative at the single cell level.
 - (2) Higher throughput.
 - (3) Greater in depth understanding of molecular mechanisms driving tissue development, tissue homeostasis and what goes wrong in cancer.
 - (4) Potentially, a new diagnostic for cancer.

- ❖ Anticipated markets:
 - (1) Cancer diagnostics
 - (2) Software companies interested in marketing to biology researchers.

Collaboration Opportunities

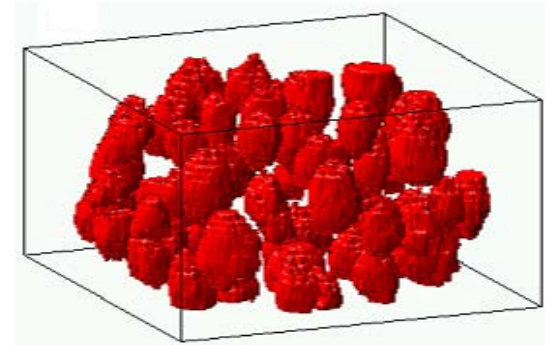
⊕ Future:

(1) Extensive validation for specific biological and clinical applications.

(2) New application areas: high throughput drug screening

⊕ Our Goal:

(1) To prove feasibility of our basic research, and then to translate it to the clinic, as well as back to the research lab as commercial products.



Contact Information

✚ For further information contact:

✚ Licensing:

David Hoekzema

301-846-5895

hoekzemat@mail.nih.gov

✚ Collaboration:

for image analysis:

Dr. Stephen Lockett

301 846 5515

loketts@mail.nih.gov

for gene positioning in cell nuclei:

Dr. Tom Misteli

301-402-3959

mistelit@mail.nih.gov