



King County Regional
Automated Fingerprint Identification System

A
F
I
S

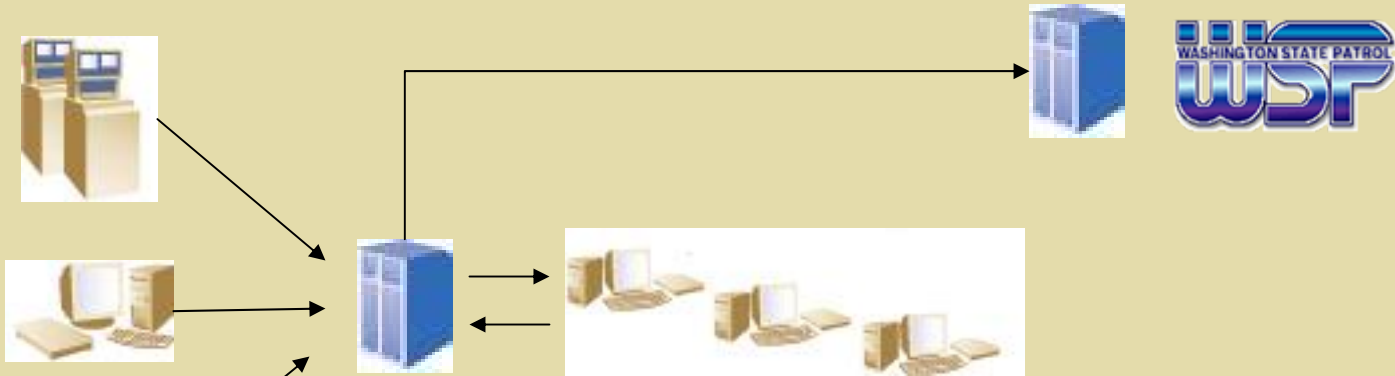
Jeri Eaton
Latent Print Supervisor

Wade Petroka
Latent Print Examiner





A
F
I
S



- Criminal history appended with most recent charges.
- Criminal charges/Concealed Weapon Permit/KC Criminal Justice Applicant info passed on to the Washington State Patrol for processing.





Direct Access

- King County
- WSP
- WIN
- CAL DOJ
- Orange County Sheriff
- FBI





NEC FW21 AFIS Latent Workstation

A
F
I
S





FBI Universal Latent Workstation V3.0



A
F
I
S



January 2004

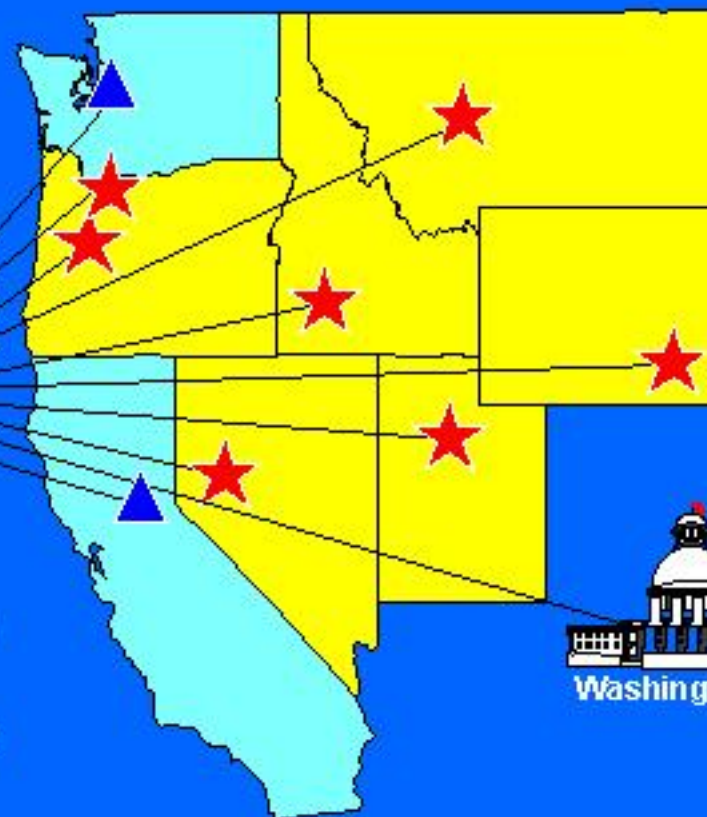
Western Identification Network, Inc.



Central Site Members

Alaska Idaho
Montana Nevada
Oregon Portland
Utah Wyoming

Interface Members California, Washington



Federal Members

Drug Enforcement Administration
Federal Bureau of Investigation
Department of Homeland Security
Internal Revenue Service
Postal Inspection Service

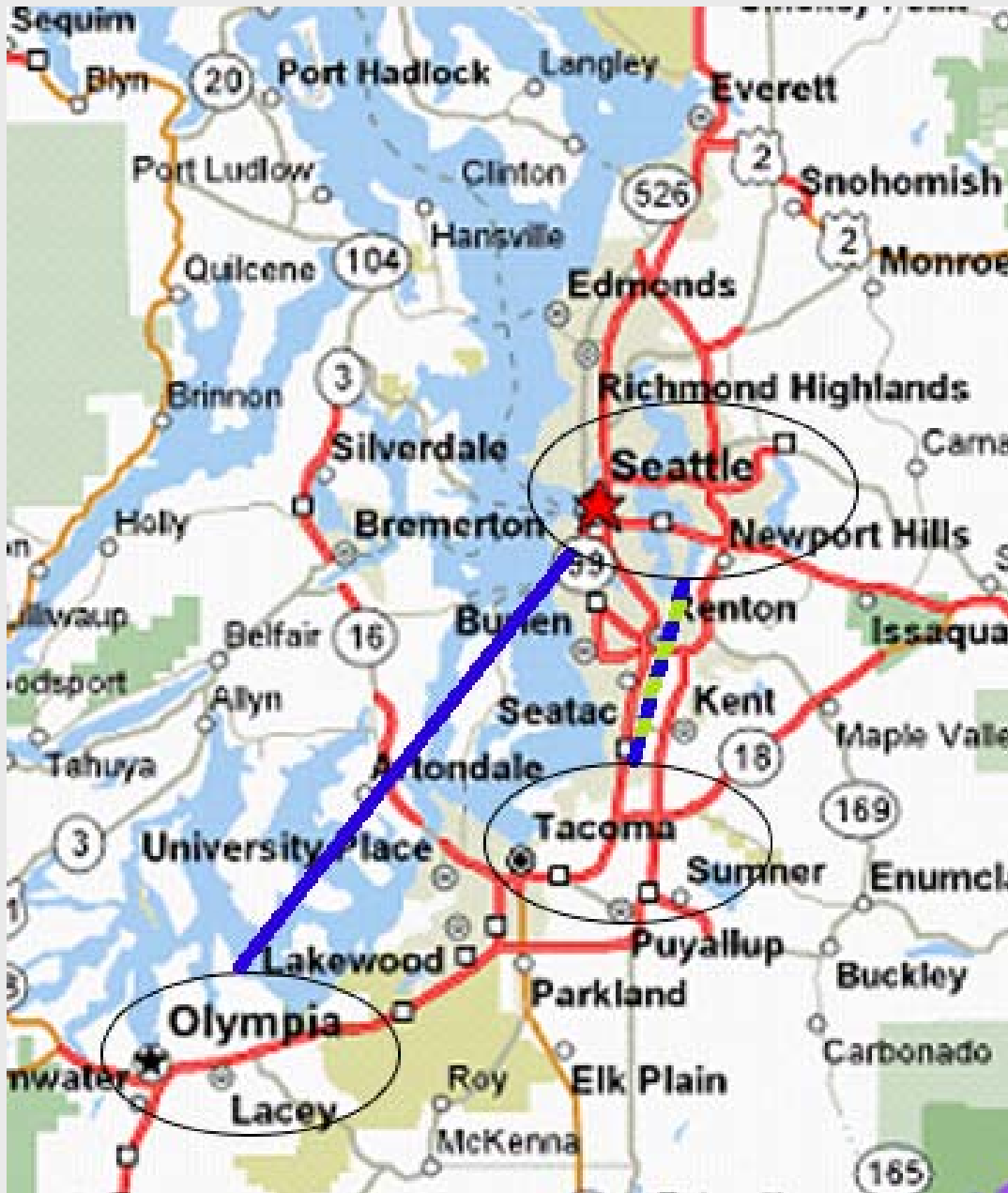




Latent Print Examiner Workstation

A
F
I
S





- Seattle to Olympia 40 mi.
- Seattle to Tacoma 20 mi.
- No connectivity to Tacoma AFIS system.

AFIS Potential Enhancements

Palm Activation and Minimum Conversion

Purchase and implement all hardware, software, and maintenance for Palm & Full Hand AFIS.

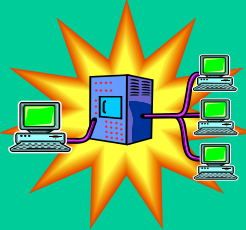


Complete Conversion



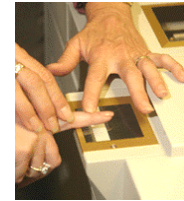
New Generation AFIS

Replace all hardware, software, and maintenance to support the ten-print, palm, and latent databases, matching system, and image archival system. It is the foundation for any further enhancements of the program.



Live Scan High Definition Upgrade

Upgrade all Live Scan units from Enhanced Definition to High Definition Units, and capture the first FBI certified 1000 ppi images in King County.



Stand-Alone Enhancements



Latent Lab Photographer



Live Scan Increase - Applicants



Live Scan Increase - Criminal w/ Palms



Staffing to Support Increased Workload

Court Identification - Feasibility Study

Investigate the feasibility of incorporating quick print capture capability into the courts.



Court Identification - Pilot Project

Wireless Services and Interfaces

Mobile ID - Central
Enable the capability for jurisdictions to access information via a mobile connection and send information to AFIS from mobile devices.



Mobile ID - Pilot Project



Contact Us

Jeri Eaton

Latent Print Supervisor

206-296-7449

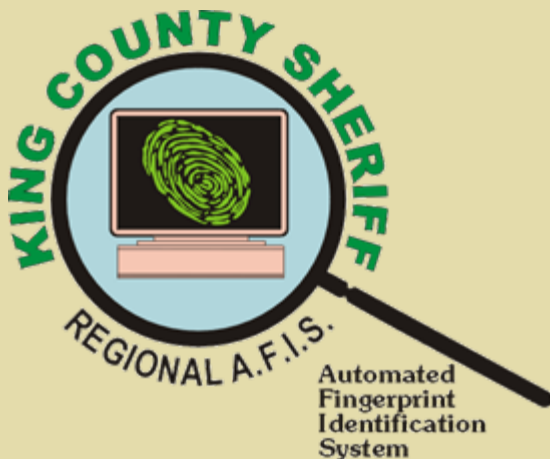
jeri.eaton@metrokc.gov

Wade Petroka

Latent Print Examiner

206-205-7626

wade.petroka@metrokc.gov



A
F
I
S

