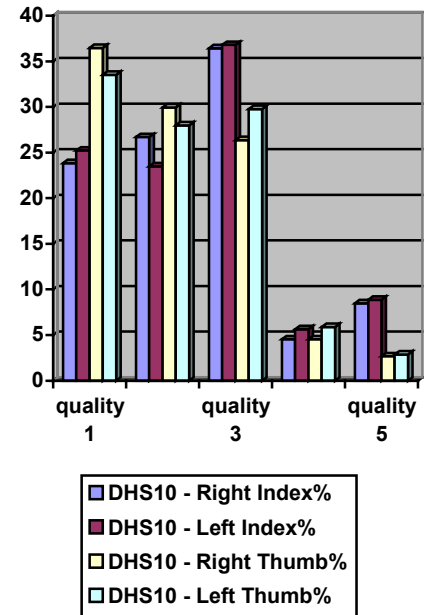
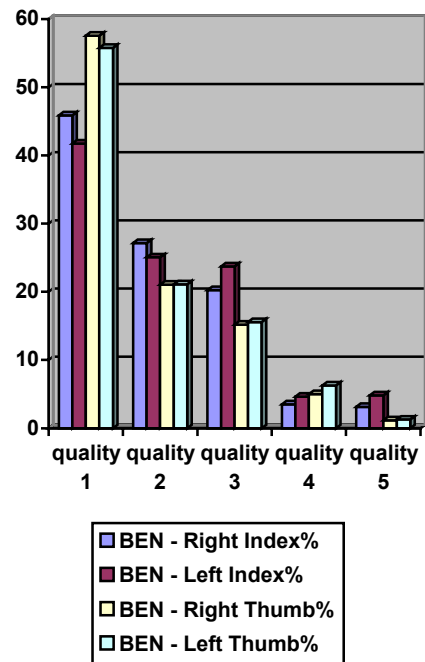


	Quality	#of sample in test set	#of sample in train set	%of Total
RIGHT INDEX	1 (excellent)	1411	20	23.85
	2(very good)	1582	20	26.7
	3 (good)	2166	20	36.43
	4 (fair)	252	20	4.53
	5 (poor)	489	20	8.48
LEFT INDEX	1 (excellent)	1494	20	25.23
	2(very good)	1389	20	23.48
	3 (good)	2188	20	36.8
	4 (fair)	318	20	5.63
	5 (poor)	511	20	8.85
RIGHT THUMB	1 (excellent)	2109	80	36.48
	2(very good)	1717	80	29.95
	3 (good)	1502	80	26.37
	4 (fair)	240	32	4.53
	5 (poor)	128	32	2.67
LEFT THUMB	1 (excellent)	1931	80	33.52
	2(very good)	1598	80	27.97
	3 (good)	1707	80	29.78
	4 (fair)	316	36	5.87
	5 (poor)	133	39	2.87



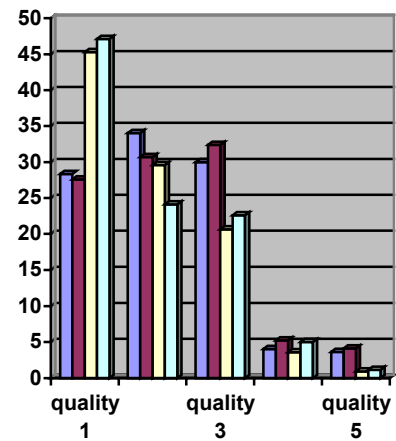
Data Set DHS10

	Quality	#of sample in test set	#of sample in train set	%of Total
RIGHT INDEX	1 (excellent)	2714	40	45.9
	2(very good)	1591	40	27.18
	3 (good)	1176	40	20.27
	4 (fair)	171	40	3.52
	5 (poor)	162	26	3.13
LEFT INDEX	1 (excellent)	2466	40	41.77
	2(very good)	1464	40	25.07
	3 (good)	1385	40	23.75
	4 (fair)	237	40	4.62
	5 (poor)	248	40	4.8
RIGHT THUMB	1 (excellent)	3396	60	57.6
	2(very good)	1203	60	21.05
	3 (good)	852	60	15.2
	4 (fair)	239	60	4.98
	5 (poor)	63	7	1.17
LEFT THUMB	1 (excellent)	3288	60	55.8
	2(very good)	1207	60	21.12
	3 (good)	874	60	15.57
	4 (fair)	315	60	6.25
	5 (poor)	61	15	1.27



Data Set BENEFITS

	Quality	#of sample in test set	#of sample in train set	%of Total
RIGHT INDEX	1 (excellent)	1660	40	28.33
	2(very good)	2002	40	34.03
	3 (good)	1758	40	29.97
	4 (fair)	203	38	4.02
	5 (poor)	184	35	3.65
LEFT INDEX	1 (excellent)	1616	40	27.6
	2(very good)	1801	40	30.68
	3 (good)	1904	40	32.4
	4 (fair)	277	36	5.22
	5 (poor)	212	34	4.1
RIGHT THUMB	1 (excellent)	2658	60	45.3
	2(very good)	1714	60	29.57
	3 (good)	1177	60	20.62
	4 (fair)	172	43	3.58
	5 (poor)	42	14	0.93
LEFT THUMB	1 (excellent)	2768	60	47.13
	2(very good)	1387	60	24.12
	3 (good)	1295	60	22.58
	4 (fair)	270	31	5.02
	5 (poor)	51	18	1.15



Data Set TXDPS