

# Original Image Record

Proposed Type-20 Record  
Draft ANSI/NIST-ITL 1-2011

# About the Original Image Record...

- It's NOT specifically for automated recognition...
  - It is a record of how the original data was processed to provide the biometric image or sample in another Record Type
- It solves someone else's problem...
  - What enhancements or processes were performed on the biometric image or sample?
  - From where did this biometric image or sample originate?
- Examples in this slide deck:
  - Are for illustrative purposes and do not represent actual case work
  - Do not reflect the proposed Type-11 and Type-12 split

# Type-10 Face Image

- Start with a group image
- Segment subject's face
- End result:
  - Type-20 Original Image
  - Type-10 Face Image



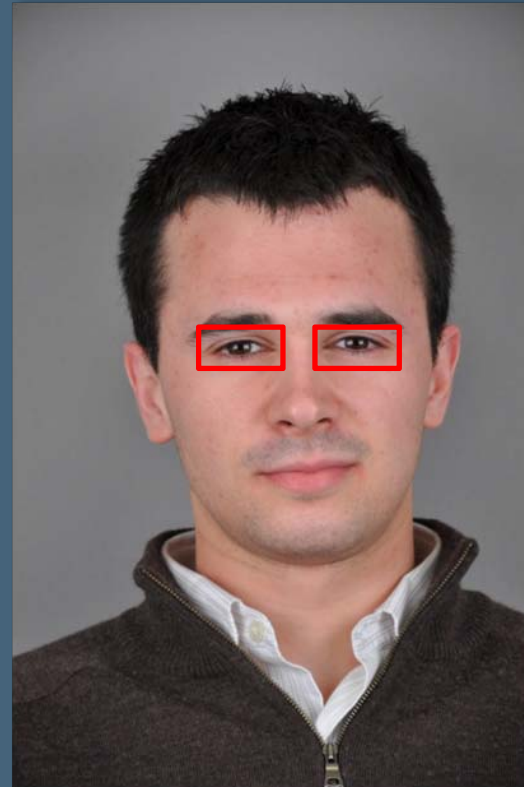
# Type-10 Face Image

- Start with a group of images
- Fuse the images into a single 2D face image
- End result:
  - Type-20 Original Images
  - Type-10 Face Image



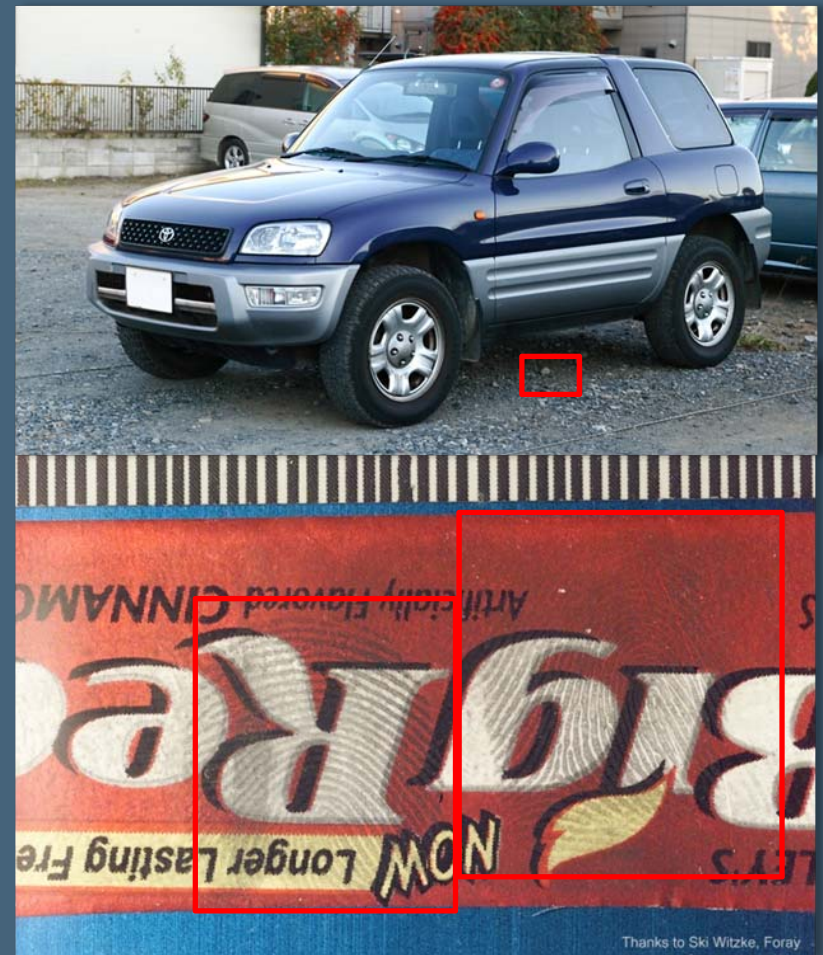
# Type-17 Iris Images

- Start with a face image
- Segment the subject's right eye
- Segment the subject's left eye
- End result:
  - Type-20 Original Image
  - 2 Type-17 Iris Images



# Type-13 Latent Images

- Start with a context photo
- Capture source photo and link it to the context photo
- Segment, rescale and grayscale first latent fingerprint
- Segment, rescale and grayscale second latent fingerprint
- End result:
  - Type-20 Original Image (context photo)
  - Type-20 Original Image (source photo)
  - 2 Type-13 Latent Images



# Known Issues

Comment	Editor's Response
<p>The type 16 record can be, and is, used to support original images.</p>	<p>Type 16 is designed as a record type for testing and is user defined. It does not, therefore, have a common field definition that Record Type 20 would have, if approved by the canvassers.</p>
<p>There is a requirement for Type-20 records to be related, but not necessarily derived, from one another. Consider:</p> <ul style="list-style-type: none"><li>• Renaming “Original image record” to “Reference sample record”.</li><li>• Expanding definition from ‘derived’ to ‘derived and/or related’.</li><li>• Adding subfield/data item(s), as appropriate, to differentiate between context and source images</li></ul>	<p>TBD</p>

# Questions?

John Mayer-Splain

[john.mayer-splain@noblis.org](mailto:john.mayer-splain@noblis.org)

(703) 610-2712



noblis™  
*For the best of reasons*