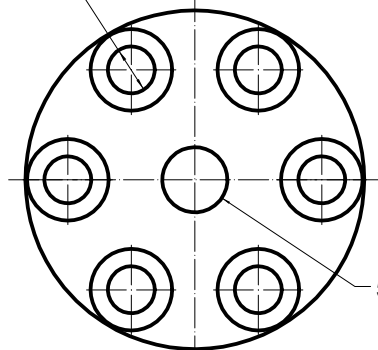


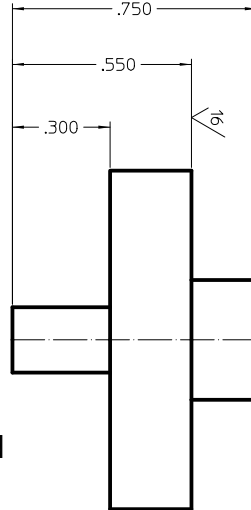
REVISIONS			
NO.	ZONE	ECN	CHANGE
1			

6X $\phi .144$ THRU EQ. SP. ON A .780 B.C.
 $\square \phi .250 \nabla .15$



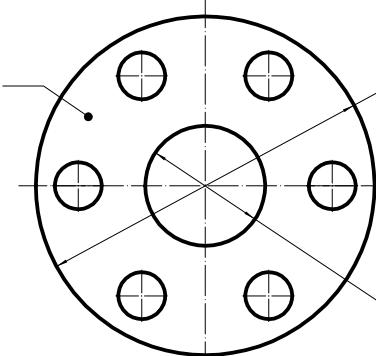
FRONT1

5/16-18 threaded stud



RIGHT1

NOTE 2



BACK1

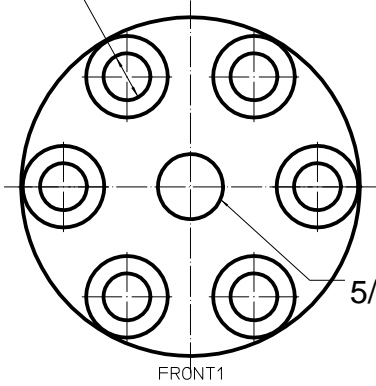
- NOTES:
1. BREAK CORNERS .005 TO .01
 2. SEALING SURFACE. DO NOT MAR, DENT, OR OTHERWISE DAMAGE THIS SURFACE.
 3. PARTS TO BE INDIVIDUALLY PACKAGED IN A MANNER TO PREVENT DAMAGE DUE TO NORMAL HANDLING DURING SHIPPING.

Made from OFHC copper

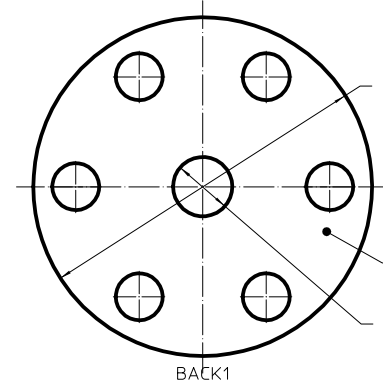
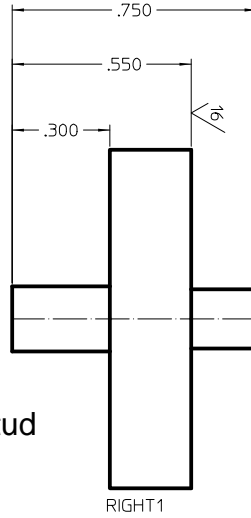
MATERIAL SPECIFICATION		DRAWING APPROVALS		UNLESS OTHERWISE SPECIFIED DIMENSIONS ARE IN INCHES		NIST		CENTER FOR NEUTRON RESEARCH	
DATE	DESCRIPTION	DATE	DATE	UNITS	DECIMALS	INCHES	FEET	NO. BUREAU OFFICE	DATE ESTABLISHED
				INCHES	THIRDS	INCHES	THIRDS	100 BUREAU OFFICE	1982
				FEET	THIRDS	FEET	THIRDS	U.S. DEPARTMENT OF COMMERCE	
				INCHES	THIRDS	INCHES	THIRDS		
				FEET	THIRDS	FEET	THIRDS		
				INCHES	THIRDS	INCHES	THIRDS		
				FEET	THIRDS	FEET	THIRDS		
				INCHES	THIRDS	INCHES	THIRDS		
				FEET	THIRDS	FEET	THIRDS		
				INCHES	THIRDS	INCHES	THIRDS		
				FEET	THIRDS	FEET	THIRDS		
				INCHES	THIRDS	INCHES	THIRDS		
				FEET	THIRDS	FEET	THIRDS		
				INCHES	THIRDS	INCHES	THIRDS		
				FEET	THIRDS	FEET	THIRDS		
				INCHES	THIRDS	INCHES	THIRDS		
				FEET	THIRDS	FEET	THIRDS		
				INCHES	THIRDS	INCHES	THIRDS		
				FEET	THIRDS	FEET	THIRDS		
				INCHES	THIRDS	INCHES	THIRDS		
				FEET	THIRDS	FEET	THIRDS		
				INCHES	THIRDS	INCHES	THIRDS		
				FEET	THIRDS	FEET	THIRDS		
				INCHES	THIRDS	INCHES	THIRDS		
				FEET	THIRDS	FEET	THIRDS		
				INCHES	THIRDS	INCHES	THIRDS		
				FEET	THIRDS	FEET	THIRDS		
				INCHES	THIRDS	INCHES	THIRDS		
				FEET	THIRDS	FEET	THIRDS		
				INCHES	THIRDS	INCHES	THIRDS		
				FEET	THIRDS	FEET	THIRDS		
				INCHES	THIRDS	INCHES	THIRDS		
				FEET	THIRDS	FEET	THIRDS		
				INCHES	THIRDS	INCHES	THIRDS		
				FEET	THIRDS	FEET	THIRDS		
				INCHES	THIRDS	INCHES	THIRDS		
				FEET	THIRDS	FEET	THIRDS		
				INCHES	THIRDS	INCHES	THIRDS		
				FEET	THIRDS	FEET	THIRDS		
				INCHES	THIRDS	INCHES	THIRDS		
				FEET	THIRDS	FEET	THIRDS		
				INCHES	THIRDS	INCHES	THIRDS		
				FEET	THIRDS	FEET	THIRDS		
				INCHES	THIRDS	INCHES	THIRDS		
				FEET	THIRDS	FEET	THIRDS		
				INCHES	THIRDS	INCHES	THIRDS		
				FEET	THIRDS	FEET	THIRDS		
				INCHES	THIRDS	INCHES	THIRDS		
				FEET	THIRDS	FEET	THIRDS		
				INCHES	THIRDS	INCHES	THIRDS		
				FEET	THIRDS	FEET	THIRDS		
				INCHES	THIRDS	INCHES	THIRDS		
				FEET	THIRDS	FEET	THIRDS		
				INCHES	THIRDS	INCHES	THIRDS		
				FEET	THIRDS	FEET	THIRDS		
				INCHES	THIRDS	INCHES	THIRDS		
				FEET	THIRDS	FEET	THIRDS		
				INCHES	THIRDS	INCHES	THIRDS		
				FEET	THIRDS	FEET	THIRDS		
				INCHES	THIRDS	INCHES	THIRDS		
				FEET	THIRDS	FEET	THIRDS		
				INCHES	THIRDS	INCHES	THIRDS		
				FEET	THIRDS	FEET	THIRDS		
				INCHES	THIRDS	INCHES	THIRDS		
				FEET	THIRDS	FEET	THIRDS		
				INCHES	THIRDS	INCHES	THIRDS		
				FEET	THIRDS	FEET	THIRDS		
				INCHES	THIRDS	INCHES	THIRDS		
				FEET	THIRDS	FEET	THIRDS		
				INCHES	THIRDS	INCHES	THIRDS		
				FEET	THIRDS	FEET	THIRDS		
				INCHES	THIRDS	INCHES	THIRDS		
				FEET	THIRDS	FEET	THIRDS		
				INCHES	THIRDS	INCHES	THIRDS		
				FEET	THIRDS	FEET	THIRDS		
				INCHES	THIRDS	INCHES	THIRDS		
				FEET	THIRDS	FEET	THIRDS		
				INCHES	THIRDS	INCHES	THIRDS		
				FEET	THIRDS	FEET	THIRDS		
				INCHES	THIRDS	INCHES	THIRDS		
				FEET	THIRDS	FEET	THIRDS		
				INCHES	THIRDS	INCHES	THIRDS		
				FEET	THIRDS	FEET	THIRDS		
				INCHES	THIRDS	INCHES	THIRDS		
				FEET	THIRDS	FEET	THIRDS		
				INCHES	THIRDS	INCHES	THIRDS		
				FEET	THIRDS	FEET	THIRDS		
				INCHES	THIRDS	INCHES	THIRDS		
				FEET	THIRDS	FEET	THIRDS		
				INCHES	THIRDS	INCHES	THIRDS		
				FEET	THIRDS	FEET	THIRDS		
				INCHES	THIRDS	INCHES	THIRDS		
				FEET	THIRDS	FEET	THIRDS		
				INCHES	THIRDS	INCHES	THIRDS		
				FEET	THIRDS	FEET	THIRDS		
				INCHES	THIRDS	INCHES	THIRDS		
				FEET	THIRDS	FEET	THIRDS		
				INCHES	THIRDS	INCHES	THIRDS		
				FEET	THIRDS	FEET	THIRDS		
				INCHES	THIRDS	INCHES	THIRDS		
				FEET	THIRDS	FEET	THIRDS		
				INCHES	THIRDS	INCHES	THIRDS		
				FEET	THIRDS	FEET	THIRDS		
				INCHES	THIRDS	INCHES	THIRDS		
				FEET	THIRDS	FEET	THIRDS		
				INCHES	THIRDS	INCHES	THIRDS		
				FEET	THIRDS	FEET	THIRDS		
				INCHES	THIRDS	INCHES	THIRDS		
				FEET	THIRDS	FEET	THIRDS		
				INCHES	THIRDS	INCHES	THIRDS		
				FEET	THIRDS	FEET	THIRDS		
				INCHES	THIRDS	INCHES	THIRDS		
				FEET	THIRDS	FEET	THIRDS		
				INCHES	THIRDS	INCHES	THIRDS		
				FEET	THIRDS	FEET	THIRDS		
				INCHES	THIRDS	INCHES	THIRDS		
				FEET	THIRDS	FEET	THIRDS		
				INCHES	THIRDS	INCHES	THIRDS		
				FEET	THIRDS	FEET	THIRDS		
				INCHES	THIRDS	INCHES	THIRDS		
				FEET	THIRDS	FEET	THIRDS		
				INCHES	THIRDS	INCHES	THIRDS		
				FEET	THIRDS	FEET	THIRDS		
				INCHES	THIRDS	INCHES	THIRDS		
				FEET	THIRDS	FEET	THIRDS		
				INCHES	THIRDS	INCHES	THIRDS		
				FEET	THIRDS	FEET	THIRDS		
				INCHES	THIRDS	INCHES	THIRDS		
				FEET	THIRDS	FEET	THIRDS		
				INCHES	THIRDS	INCHES	THIRDS		
				FEET	THIRDS	FEET	THIRDS		
				INCHES	THIRDS	INCHES	THIRDS		
				FEET	THIRDS	FEET	THIRDS		
				INCHES	THIRDS	INCHES	THIRDS		
				FEET	THIRDS	FEET	THIRDS		
				INCHES	THIRDS	INCHES	THIRDS		
				FEET	THIRDS	FEET	THIRDS		
				INCHES	THIRDS	INCHES	THIRDS		
				FEET	THIRDS	FEET	THIRDS		
				INCHES	THIRDS	INCHES	THIRDS		
				FEET	THIRDS	FEET	THIRDS		
				INCHES	THIRDS	INCHES	THIRDS		
				FEET	THIRDS	FEET	THIRDS		
				INCHES	THIRDS	INCHES	THIRDS		
				FEET	THIRDS	FEET	THIRDS		
				INCHES	THIRDS	INCHES	THIRDS		
				FEET	THIRDS	FEET	THIRDS		
				INCHES	THIRDS	INCHES	THIRDS		
				FEET	THIRDS	FEET	THIRDS		
				INCHES	THIRDS	INCHES	THIRDS		
				FEET	THIRDS	FEET	THIRDS		
				INCHES	THIRDS	INCHES	THIRDS		
				FEET	THIRDS	FEET	THIRDS		
				INCHES	THIRDS	INCHES	THIRDS		
				FEET	THIRDS	FEET	THIRDS		
				INCHES	THIRDS	INCHES	THIRDS		
				FEET	THIRDS	FEET	THIRDS		
				INCHES	THIRDS	INCHES	THIRDS		

REVISIONS			
NO.	ZONE	ECN	CHANGE
1			

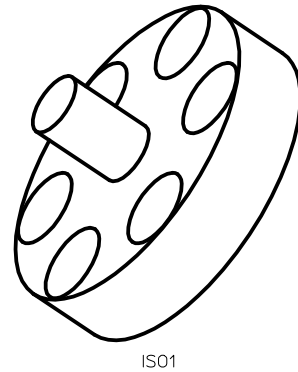
6X $\phi .144$ THRU ON A $\phi .780$ B.C.
 $\square \phi .250 \nabla .150$



5/16-18 threaded stud



$\phi 1.040$
 NOTE 2
 $\phi .182 \pm .002$



ISO1

- NOTES:
1. BREAK CORNERS .005 TO .01
 2. SEALING SURFACE. DO NOT MAR, DENT, OR OTHERWISE DAMAGE THIS SURFACE.
 3. PARTS TO BE INDIVIDUALLY PACKAGED IN A MANNER TO PREVENT DAMAGE DUE TO NORMAL HANDLING DURING SHEPPING.

Made from OFHC copper

MATERIAL SPECIFICATION		DRAWING APPROVALS		UNLESS OTHERWISE SPECIFIED DIMENSIONS ARE IN INCHES		NIST		CENTER FOR NEUTRON RESEARCH	
DATE	DESCRIPTION	DATE	DATE	UNITS	CONVERSIONS	NO.	ORG. NO.	NO. BUREAU OFFICE	DATE ESTABLISHED, MO, YEAR
				INCHES	FRACTIONS				
				MM	DECIMALS				
				INCHES	ANGLES				
				MM	DEGREES				
MODEL DATA		DRAWING DATA		DO NOT SCALE DRAWING					
MODEL NAME	SCALE	DATE	DATE	REVISION	DATE	APPROVED	DATE	FOR	
DIL FRIDGE SMALL DIAMETER	5:1	6/2/12 4:43 PM	6/2/12 4:43 PM	1	6/2/12 4:43 PM	Mercedeez	6/2/12 4:43 PM	D	014-1231
REVISOR	DATE	UNISON	DATE	SHEETS	1				1 of 1
DATE	6/2/12 3:00 PM								
DATE	6/2/12 4:43 PM								
DATE	6/2/12 4:43 PM								
DATE	6/2/12 4:28 PM								

DIL FRIDGE SMALL DIAMETER
 014-1231
 DIM. & TOL. PER ANSI Y14.5M-1982