

**NIST NSRDS 49-2018**

# **CYCLE\_D: NIST Vapor Compression Cycle Design Program**

**Version 6.0  
User's Guide**

J.S. Brown  
P.A. Domanski  
E.W. Lemmon

This publication is available free of charge from:  
<http://dx.doi.org/10.6028/NIST.NSRDS.49-2018>



**NIST NSRDS 49-2018**

# **CYCLE\_D: NIST Vapor Compression Cycle Design Program**

**Version 6.0  
User's Guide**

J.S. Brown  
*The Catholic University of America*

P.A. Domanski  
*Engineering Laboratory  
National Institute of Standards and Technology*

E.W. Lemmon  
*Material Measurement Laboratory  
National Institute of Standards and Technology*

This publication is available free of charge from:  
<http://dx.doi.org/10.6028/NIST.NSRDS.49-2018>

September 2018



U.S. Department of Commerce  
*Wilbur L. Ross, Jr., Secretary*

National Institute of Standards and Technology  
*Walter Copan, NIST Director and Under Secretary of Commerce for Standards and Technology*



The National Institute of Standards and Technology (NIST) uses its best efforts to deliver a high-quality copy of the Database and to verify that the data contained therein have been selected on the basis of sound scientific judgment. However, NIST makes no warranties to that effect, and NIST shall not be liable for any damage that may result from errors or omissions in the Database.

---

NIST Standard Reference Database 23 -(c) 1989, 1991, 1993, 1998, 2003, 2009, 2010, 2012, 2016, 2018 copyright by the U.S. Secretary of Commerce on behalf of the United States of America. All rights reserved. No part of this database may be reproduced, stored in a retrieval system, or transmitted, in any form or by any means, electronic, mechanical, photocopying, recording, or otherwise, without the prior written permission of the distributor.

Certain trade names and company products are mentioned in the text to specify adequately the computer products and equipment needed to use this software. In no case does such identification imply endorsement or recommendation by the National Institute of Standards and Technology of these computer products and equipment, nor does it imply that the products are necessarily the best available for the purpose.

Microsoft is a registered trademark, and Windows is a trademark of the Microsoft Corporation. All other brand and product names are trademarks or registered trademarks of their respective companies.

**National Institute of Standards and Technology  
National Standard Reference Database Series 49-2018  
38 pages (September 2018)  
CODEN: NTNOEF**

**This publication is available free of charge from:  
<https://doi.org/10.6028/NIST.NSRDS.49-2018>**

## ACKNOWLEDGMENTS

Version 1.0 of CYCLE\_D, authored by J. Chi, D.A. Didion, and P.A. Domanski, was developed in 1992 under partial funding from the Trane Company and the Electric Power Research Institute, with G. Lange and T. Statt managing the project. The authors acknowledged helpful suggestions from P. Glamm. J. Wnek made modifications and improvements of the graphical user interface in Version 2.0, and J. Schnotale and P.A. Domanski implemented thermodynamic charts and line sizing calculations in Version 3.0. For Version 4.0, J. S. Brown extended simulation options to include transcritical cycles, cycles with two-stage compression with intercooling, and two and three-stage economizer cycles; and E. W. Lemmon provided new thermodynamic charts. The authors acknowledged K. Tchen's assistance in upgrading the graphical user interface, and J. Calm, D. Yashar, B. Dougherty, and T. Watson for their testing and comments on the program. For Version 5.0, J. S. Brown upgraded property calculation routines to REFPROP 9.0 and made the following program modifications: (1) allow for saturation pressure inputs for both the evaporator and the condenser, (2) allow the user to impose refrigerant pressure drops in the evaporator and in the condenser, (3) allow the user to specify the compressor isentropic efficiency for each stage for multi-stage cycles, (4) allow the user to assign waste heat from motor inefficiency losses to either the evaporator load, suction refrigerant vapor, or condenser load, and (5) allow for the optimization of the intermediate pressures for a three-stage economizer cycle. Versions 5.1 and 5.1.1 implemented REFPROP 9.1 refrigerant property routines and several new single-component and blend refrigerants. For Version 6.0, J.S. Brown implemented blends of up to 10 components and upgraded property calculation routines to REFPROP 10.0.

# CONTENTS

INTRODUCTION.....	1
INSTALLATION .....	1
System Requirements .....	1
Installation Procedure.....	1
MODELING APPROACH.....	1
Refrigerants and Refrigerant Properties .....	1
Evaporator and Condenser or Gas Cooler .....	1
Compressor .....	2
Economizer(s) and Intercooler.....	3
Suction Line and Discharge Line .....	3
Liquid-Line/Suction-Line Heat Exchanger.....	3
Indoor Fan, Outdoor Fan, and Controls .....	3
Refrigerant Line Sizing Calculations .....	3
Simulation Results .....	4
Uncertainties of Simulation Results .....	4
USE OF CYCLE_D.....	5
Specifying User's Options.....	5
Entering New Input Data.....	7
Refrigerant Tab.....	7
Cycle Options Tab .....	9
System Specifications Tab .....	11
Using a Compressor Map .....	11
Entering Data for the Transcritical Cycle .....	13
Loading an Existing File with Input Data.....	13
Executing a Simulation Run.....	14
Presenting Simulation Results.....	14
Summary Results .....	14
System Schematic Window .....	15
State Diagram Windows .....	16
Line Sizing Information .....	17
Saving Input Data .....	17
Diagnostic Messages .....	18
Help Menu .....	18
REFERENCES .....	19
Appendix A. SINGLE-COMPOUND REFRIGERANTS AVAILABLE IN CYCLE_D.....	20
Appendix B. PREDEFINED REFRIGERANT BLENDS AVAILABLE IN CYCLE_D.....	22
Appendix C. COMPRESSOR MAPS.....	24
Compressor Map Formats .....	24
Preparing a New Compressor Map.....	25
Appendix D. NOMENCLATURE USED FOR REPORTING SIMULATION RESULTS.....	27
Appendix E. UNITS, CHECKS AND WARNINGS .....	28
Appendix F. CONTACTS .....	29





## INTRODUCTION

The CYCLE\_D model simulates vapor compression refrigeration cycles that use pure refrigerants or blends of refrigerants. The model can simulate a basic subcritical or transcritical refrigeration cycle, both with or without a liquid-line/suction-line heat exchanger. In addition, the model can simulate a subcritical two-stage economizer cycle, a subcritical three-stage economizer cycle, and a subcritical two-stage compression cycle with intercooling. Calculations are based on refrigerant properties as represented in the NIST Reference Fluid Thermodynamic and Transport Properties Program – REFPROP, Version 10.0 [1]. Simulation results are presented in terms of coefficient of performance (COP), volumetric capacity, thermodynamic parameters, and thermodynamic charts.

## INSTALLATION

### System Requirements

Personal computer capable of running Microsoft Windows 7, 8, 10, or XP with Service Pack 3. A hard disk with eight megabytes of available space. The screen resolution should be set to 800 x 600 or higher to view images in their entirety.

### Installation Procedure

Execute the CYCLE\_D installation file setup.exe with CYCLE\_D Setup.msi residing in the same directory. Follow the installation instructions. A NIST CYCLE\_D Program Group will be created at the end of the installation.

To run the program, double-click on the NIST CYCLE\_D icon.

## MODELING APPROACH

The basic subcritical or transcritical system simulated by CYCLE\_D consists of a compressor, a discharge line, a condenser for the subcritical cycle (a gas cooler for the transcritical cycle), an expansion device, an evaporator, a compressor suction line, and an optional liquid-line/suction-line heat exchanger. The other subcritical cycles may contain a second compressor, one or two economizers, or an intercooler. These other subcritical cycles, however, do not include the optional liquid-line/suction-line heat exchanger. The user of the program has to specify the refrigerant and provide input data for the above hardware components, except the expansion device, which is modeled as being isenthalpic. The user can also specify the power requirements of the indoor fan, outdoor fan, and control unit of the system.

### Refrigerants and Refrigerant Properties

CYCLE\_D includes 75 single-compound refrigerants, which can be selected as the working fluid. These pure refrigerants can also be combined to form blends of up to ten components. In addition, CYCLE\_D includes 113 predefined blends. See Appendix A for the list of available pure refrigerants and Appendix B for the list of available predefined blends.

CYCLE\_D uses REFPROP 10.0 [1] routines for calculating thermodynamic properties of pure refrigerants and refrigerant mixtures and applies the default models recommended in REFPROP for property predictions.

### Evaporator and Condenser or Gas Cooler

The evaporator and condenser are represented by specifying the refrigerant temperature (or pressure) in each of the heat exchangers.

The refrigerant temperature (or pressure) in the evaporator can be specified as either a dew-point temperature (or pressure) or an average temperature (or pressure). The average temperature (or pressure) in the evaporator is calculated as an arithmetic mean of the dew-point temperature (or pressure) and the temperature (or pressure) of the refrigerant entering the evaporator. Additionally, the refrigerant superheat at the evaporator exit can be specified.

The refrigerant temperature (or pressure) in the condenser can be specified to be either a bubble-point temperature (or pressure), a dew-point temperature (or pressure), or an average temperature (or pressure). The average temperature (or pressure) is calculated as an arithmetic mean of the dew-point and bubble-point temperatures (pressures). Additionally, refrigerant subcooling at the condenser outlet can be specified.

In addition to specifying refrigerant saturation temperature (or pressure), the user may specify a refrigerant pressure drop (or saturation temperature drop) for the evaporator and/or the condenser. The program assigns the entire pressure drop to the two-phase refrigerant.

The gas cooler is represented either by specifying the refrigerant pressure or allowing the program to optimize the refrigerant pressure, and by specifying the refrigerant exit temperature. Zero pressure drop is assumed in the gas cooler. The gas cooler pressure can be either specified or optimized by the program for the maximum coefficient of performance.

The use of an average temperature (or pressure) in the condenser and evaporator as a mean of refrigerant temperatures (or pressures) at the end of two-phase processes is a simplification because temperature profile versus enthalpy in a two-phase region is not linear, in particular for large-glide zeotropic mixtures.

## Compressor

For a basic subcritical cycle, CYCLE\_D provides two options for representation of the compressor: the "Compressor Efficiency" option and the "Compressor Map" option. For other subcritical cycles and for the transcritical cycle, only the "Compressor Efficiency" option is available.

The "Compressor Efficiency" option requires input values of isentropic efficiency, compressor volumetric efficiency, electric-motor efficiency, and a target system **Cooling Capacity**, which is the evaporator capacity adjusted for the heat added by the indoor coil fan. If the compression process occurs in stages, the isentropic efficiency for each stage can be independently specified. If the cycle includes two compressors, their inputs have to be independently specified.

If the value used for the electric motor efficiency is less than unity, the entire heat rejected by the electric motor(s) can be assigned: (1) as an extra evaporator load reducing the capacity available for cooling duty, (2) as heat superheating the suction vapor within a hermetic compressor shell before the compressor's cylinder inlet, or (3) as an extra condenser load in a system with a liquid pump, which pumps the liquid refrigerant from the condenser outlet to cool the motor and returns the refrigerant to the condenser inlet.

The "Compressor Map" option uses compressor-map correlations, which are typically derived from compressor calorimeter tests. Three types of correlations are allowed. They are described in Appendix C.

The "Compressor Map" option also requires a value for either the system **Cooling Capacity** or **Capacity Multiplier**. If **Capacity Multiplier** is specified, its value is used in the simulation as a multiplication factor for compressor capacity (calculated by compressor-map correlations) and for indoor and outdoor fan powers (entered by the user). Power input to the system control unit is unaffected. If the system **Cooling Capacity** is specified, the simulations are performed for a system with a compressor of identical efficiency characteristics but with adjusted displacement, so that the system can provide the specified capacity. The power input to the indoor and outdoor fans and system control unit are unaffected by the specified capacity value.

Compressor-map equations correlate the compressor performance at certain values of the suction superheat and condenser subcooling. To allow simulations at user-specified conditions, the following steps and assumptions are employed by the model:

- The isentropic efficiency of the compressor is calculated using the compressor-map correlations at user-specified saturation temperatures (or pressures) and at the superheat and subcooling levels used during the calorimeter tests. It is assumed that the isentropic efficiency is not affected by the level of superheat, and the calculated efficiency value is used in the cycle calculations.
- When calculating the refrigerant mass flow rate, it is assumed that the compressor volumetric efficiency and speed (revolutions per minute, RPM) are not affected by the suction vapor superheat. Consequently, the refrigerant mass flow rate at the user-specified superheat equals the value of mass flow rate at the superheat

set during the calorimeter tests, adjusted for the different specific volume of the suction vapor caused by a different superheat.

### **Economizer(s) and Intercooler**

The economizers and intercooler are represented by the refrigerant pressures for these intermediate components. For the economizer cycles, the user can specify the intermediate pressures or have them optimized by the program for the maximum coefficient of performance.

### **Suction Line and Discharge Line**

The pressure drop in the suction and discharge lines can be specified by assigning a value of the corresponding saturation temperature drop of the refrigerant. CYCLE\_D assumes the lines are adiabatic.

### **Liquid-Line/Suction-Line Heat Exchanger**

The liquid-line/suction-line heat exchanger (LLSL-HX) is specified by the user by assigning an effectiveness value of the heat exchanger. The assignment of zero effectiveness denotes no LLSL-HX in the cycle.

### **Indoor Fan, Outdoor Fan, and Controls**

The auxiliary powers are specified by the user. The indoor and outdoor fan powers are used in the total power calculation and as heat in the capacity calculations for the evaporator and condenser. The control unit power is only used in the total power calculation.

### **Refrigerant Line Sizing Calculations**

After cycle calculations have been completed, CYCLE\_D can provide sizing information for the compressor suction and discharge lines and for the liquid line connecting the condenser and expansion valve. This information includes refrigerant velocity and tube lengths for a range of diameters of straight type L copper tubing.

CYCLE\_D calculates refrigerant velocity and tube length using refrigerant state parameters and the mass flow rate determined during cycle simulations, and the predetermined pressure drop in the refrigerant lines. For the suction and discharge lines, the pressure drops are those specified by the user in the System Specifications tab in terms of the refrigerant dew-point temperature drop. For the liquid line, CYCLE\_D calculates the line length for the pressure drop that would result in bringing the subcooled refrigerant to flashing. The refrigerant tube length is calculated by the following equation:

$$L = 2 \cdot \Delta P \cdot D \cdot \rho / (f \cdot G^2)$$

where:

- D - tube inside diameter (m)
- f - Darcy friction factor
- G - refrigerant mass flux (kg/m<sup>2</sup>)
- L - tube length (m)
- ΔP - pressure drop (Pa)
- ρ - refrigerant density (kg/m<sup>3</sup>)

For the Reynolds number (Re) less than 2000, the friction factor  $f=64/Re$  for fully developed laminar flow is used [3]. The Petukhov's correlation for friction factor for turbulent flow,  $f=1/(1.58 \cdot \ln(Re)-3.28)^2$  [4], is used for higher Reynolds numbers. The calculations assume lubricant-free refrigerant flowing in adiabatic tubes, and use refrigerant parameters corresponding to the average of the inlet and outlet pressures.

The refrigerant velocity values presented by CYCLE\_D are those at tube inlets. Refrigerant velocity varies in a tube because of a pressure drop and change of specific volume. The lowest velocity, critical to oil return, is at the tube inlet because of the lowest specific volume.

The program does not provide line length values for zero pressure drops; i.e., for zero condenser subcooling for the liquid line, and for zero drop in saturation temperatures for the vapor lines. Also, the program does not provide results for the liquid and suction lines if the system employs a liquid-line/suction-line heat exchanger.

Note that CYCLE\_D performs refrigerant line sizing calculations using several simplifications. The line sizing information is provided by CYCLE\_D for general orientation and should not be used as strict design criteria for field application.

## Simulation Results

Simulation results are generated in two categories: (1) for the thermodynamic cycle and (2) for the compressor and system. The cycle category presents the results obtained per unit mass of refrigerant circulated by the compressor. These results reflect refrigerant parameters only and are not affected by the auxiliary power input to the indoor fan, outdoor fan, and controls.

If the electric motor efficiency is less than unity, the user's allocation of the waste heat will affect the simulation results. The waste heat is calculated by the following equation:

$$Q_{\text{comp motor}} = (1 - \eta_{\text{comp motor}})(h(3) - h(2))$$

where:

- $Q_{\text{comp motor}}$  - compressor motor waste heat (kJ/kg)
- $\eta_{\text{comp motor}}$  - compressor motor efficiency (fraction)
- $h(3)$  and  $h(2)$  - refrigerant enthalpy at the cylinder outlet and inlet, respectively (kJ/kg)  
(Refer to page 15 for the Summary Results window.)

Allocation of the waste heat as an extra evaporator load directly reduces the cooling capacity provided by the evaporator to its environment by the amount of the waste heat. Allocation of the waste heat as an extra condenser load directly increases the heating capacity provided by the condenser to its environment by the amount of the waste heat. In this case, cooling of the electric motor is implemented with the refrigerant pumped by a liquid pump from the condenser outlet to the motor, and then returned to the condenser inlet. The flow rate of the refrigerant pumped by the liquid pump is controlled so the refrigerant enthalpy after absorbing heat from the electric motor equals the enthalpy of refrigerant at the compressor outlet.

The allocation of waste heat as an extra evaporator or condenser load does not alter the state parameters of the thermodynamic cycle because cycle simulations are constrained by the specified saturation temperature (pressure) for the evaporator and the saturation temperature (pressure) and subcooling for the condenser. However, the state parameters of the thermodynamic cycle are altered by allocating the waste heat to the suction vapor, which increases refrigerant temperature at the cylinder inlet.

The compressor and system results are calculated for the system based on the **Cooling Capacity** or **Capacity Multiplier** specified by the user. CYCLE\_D calculates line sizing information using the thermodynamic parameters identified throughout the cycle and the refrigerant mass flow rate needed to obtain the target system capacity. The naming convention used for simulation results is explained in Appendix D.

## Uncertainties in Simulation Results

Uncertainties in the simulation results are directly related to the uncertainties of the thermodynamic properties calculated by REFPROP 10.0 [1] routines incorporated into the CYCLE\_D package. CYCLE\_D uses the REFPROP default property models, which should provide the most accurate predictions. The user should be aware that the uncertainties in these models vary somewhat depending on the refrigerant, property, and thermodynamic state. It is thus impossible to give a simple, global statement of uncertainties. Even for the most-studied fluids with equations of state based on accurate, wide-ranging data, uncertainties are complicated functions of temperature and pressure. For details, refer to the original literature sources listed in [1].

## USE OF CYCLE\_D

This section explains how to use CYCLE\_D: to specify a cycle/system; to run a simulation; to present simulation results; and to manage input/output files. If the user needs additional information after going through this tutorial, he or she may refer to CYCLE\_D's **Help** menu.

Once CYCLE\_D is installed on your computer, it can be started by double clicking on the **CYCLE\_D** icon. The opening screen is displayed first. Click on the **OK** button to proceed. After doing so, the main CYCLE\_D screen appears. Figure 1 shows the main screen after a new session has been started and the user has clicked on the '**Options**' pull-down menu.

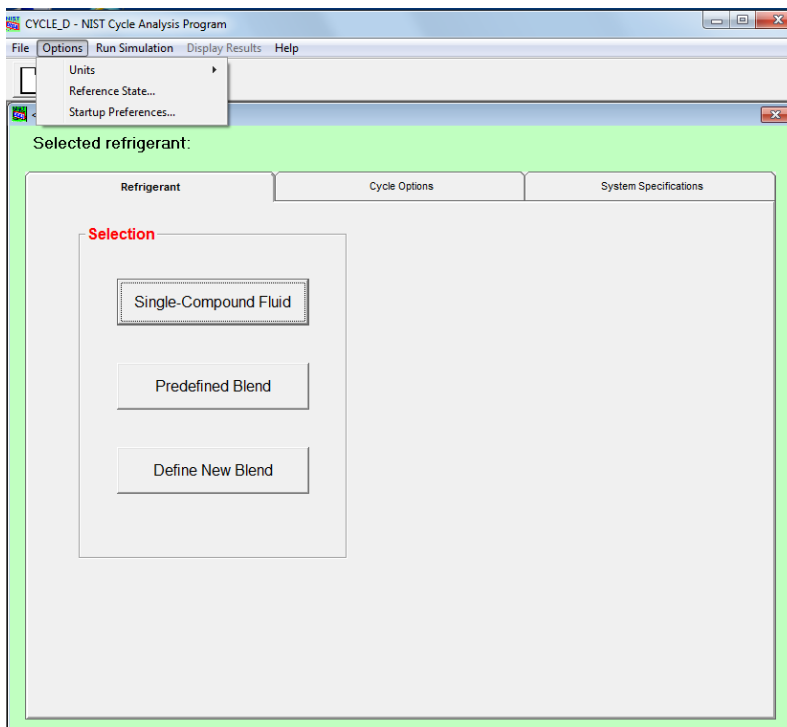
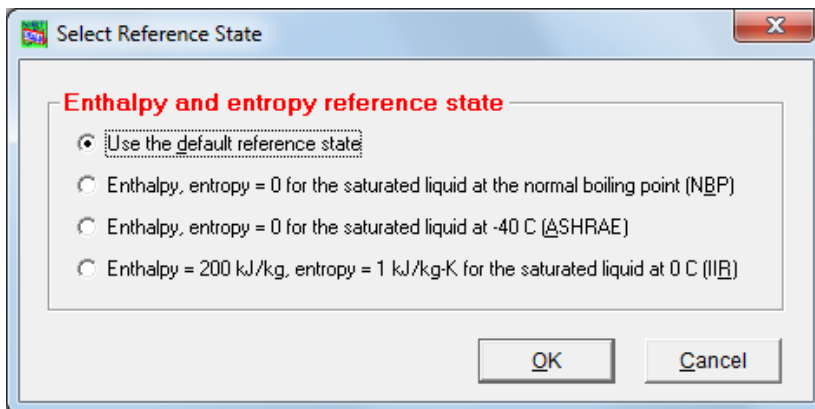


Figure 1. Main window with activated Options pulldown menu

### Specifying User's Options

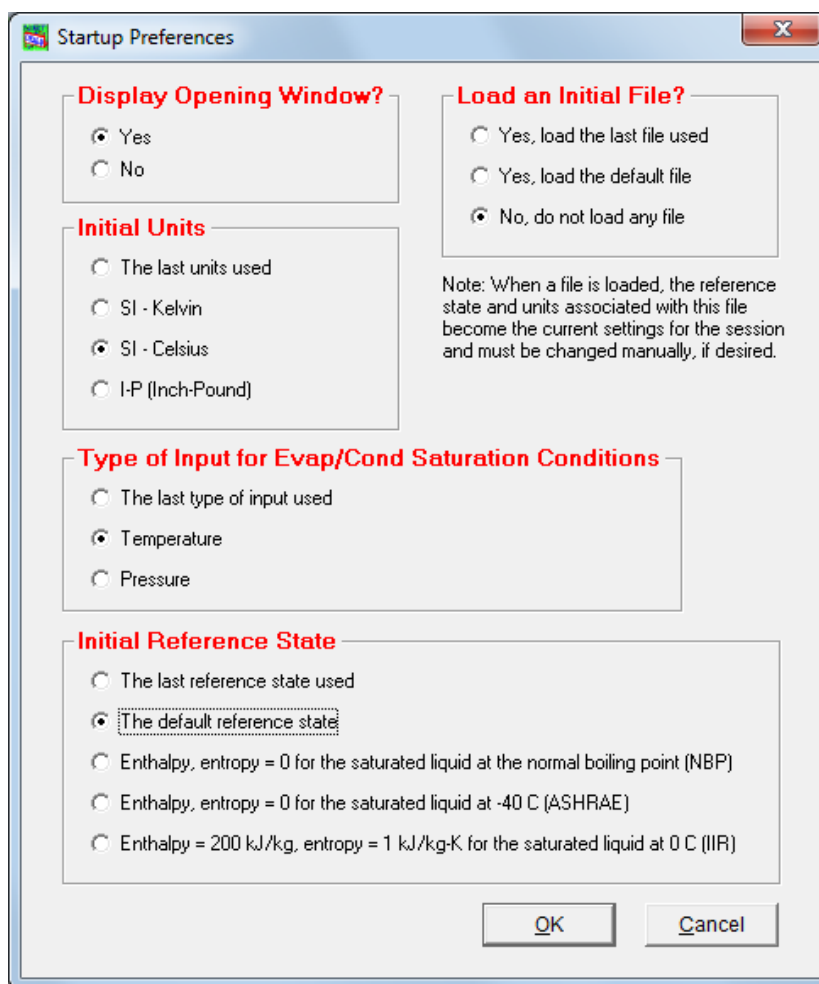
To select either SI or Inch-Pound (I-P) units, click the **Options/Units** menu item. There are three options for units: (1) SI with temperatures specified in K, (2) SI with temperatures specified in °C, or (3) I-P with temperatures specified in °F.

To select the reference state for enthalpy and entropy calculations [1], click on the **Options/Reference State** menu item, after which Figure 2 appears. Note: the reference states are completely arbitrary; however, three common ones are provided: (1) setting enthalpy and entropy values to zero at the selected refrigerant's normal boiling point, (2) ASHRAE convention, or (3) International Institute of Refrigeration (IIR) convention. The first radio button option, if selected, uses the REFPROP 10.0 [1] default reference state for that particular refrigerant. If a blend is selected, the reference state is applied to the blend and not to each pure component.



**Figure 2. Selecting reference state for enthalpy and entropy calculations**

Figure 3 shows the choices for **Startup Preferences**. When the user sets the option to load an initial file (which could be the last file used or a default file), the units and reference state preferences stored in that file become the current preferences for a given session. If desired, these preferences can be changed manually using the **Options** pulldown menu. Note that loading any existing file anytime during a simulation session will change the current preferences for that session to those stored in the loaded file.



**Figure 3. Startup Preferences**

## Entering New Input Data

To enter new data, the user uses the three tabs titled **Refrigerant**, **Cycle Options**, and **System Specifications** shown in Figure 1. The sequence of using these tabs does not matter.

### Refrigerant Tab

The **Refrigerant** tab provides three options: (1) **Single-Compound Fluid** (Figure 4), (2) **Predefined Blend** (Figure 6), and (3) **Define New Blend** (Figure 8).

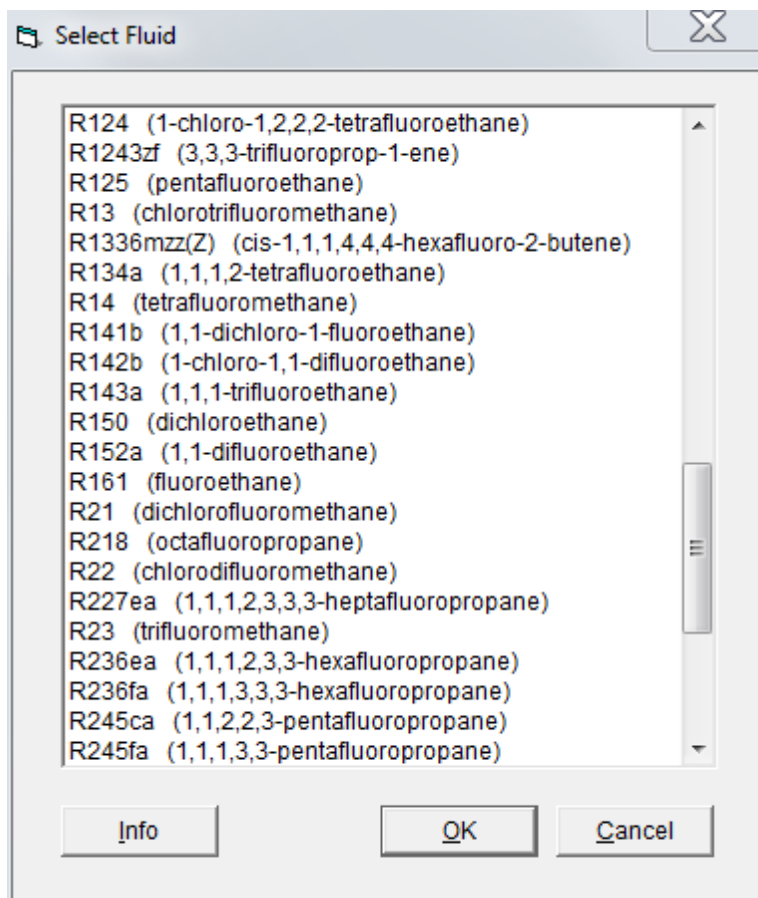
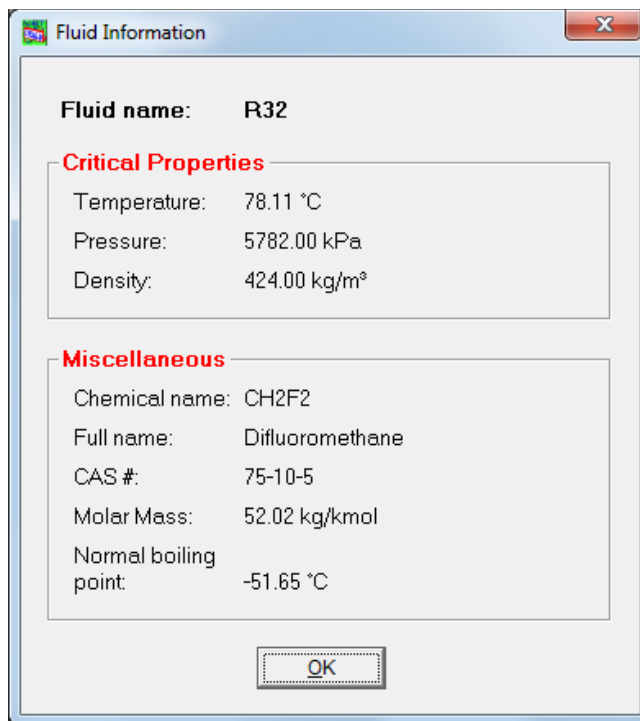
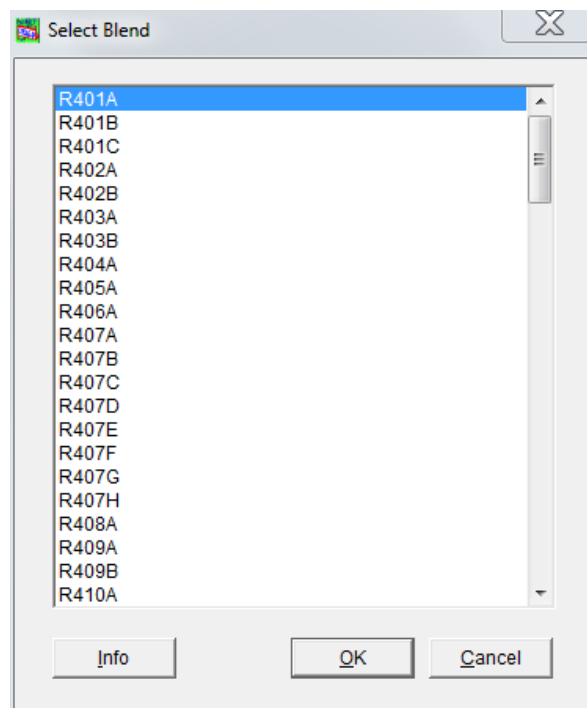


Figure 4. Selecting a single-compound fluid

The user may click the **Info** button, shown in Figures 4 and 6, to display information for the selected refrigerant. Examples are shown in Figures 5 and 7 for a single-compound fluid and predefined blend, respectively.

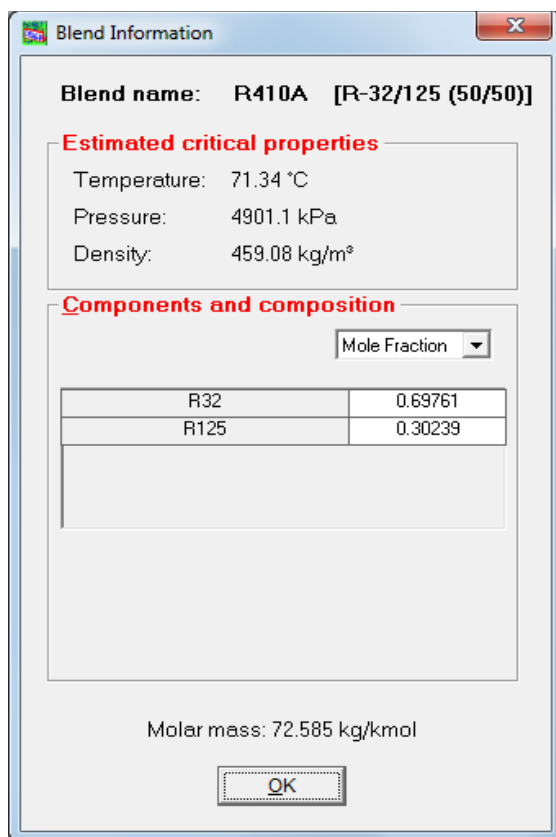


**Figure 5. Information for a single-compound fluid**



**Figure 6. Selecting a predefined blend**





**Figure 7. Information for a predefined blend**

For the **Define New Blend** option (Figure 8), refrigerants from the left-hand list can be added to the mixture (right-hand list) via the **Add** button. Refrigerants can be deleted from the mixture by using the **Remove** button. After specifying the mixture and clicking **OK**, Figure 9 appears. The composition can be modified by typing the appropriate values in the boxes and clicking **OK**. The composition can be specified in terms of mass fractions or mole fractions by toggling the combo box. Note that the mass and mole fractions must sum to unity; if they do not, an error message will appear. The new mixture can be stored by clicking the **Store** button. If the mixture is stored in the “~mixtures” subdirectory, it will thereafter appear in the list of predefined blends (Figure 6).

The ‘fluids’ and ‘mixtures’ folders containing REFPROP fluid and mixture files are subdirectories of the folder selected for installation of CYCLE\_D. For adding new fluids to the program, see Appendix A.

### **Cycle Options Tab**

The **Cycle Options** tab presents the following cycle choices (Figure 10):

- Single-stage cycle with or without a LLSL-HX
- Two-stage cycle with an economizer, which includes an option to optimize the intermediate pressure
- Two-stage cycle with an intercooler
- Three-stage cycle with an economizer, which includes an option to optimize the intermediate pressure.

In the example shown in Figure 10, we selected the single-stage cycle with the LLSL-HX of 50 % effectiveness. For two-stage economizer cycles, click the **Two-Stage Economizer** radio button and then click either the **Impose intermediate pressure** radio button or the **Optimize intermediate pressure** radio button, and either the **Impose same efficiencies for both stages** radio button or the **Specify different efficiencies for the two stages** radio button. The **Cycle Options** tab will display these options after the **Two-Stage Economizer** option has been selected

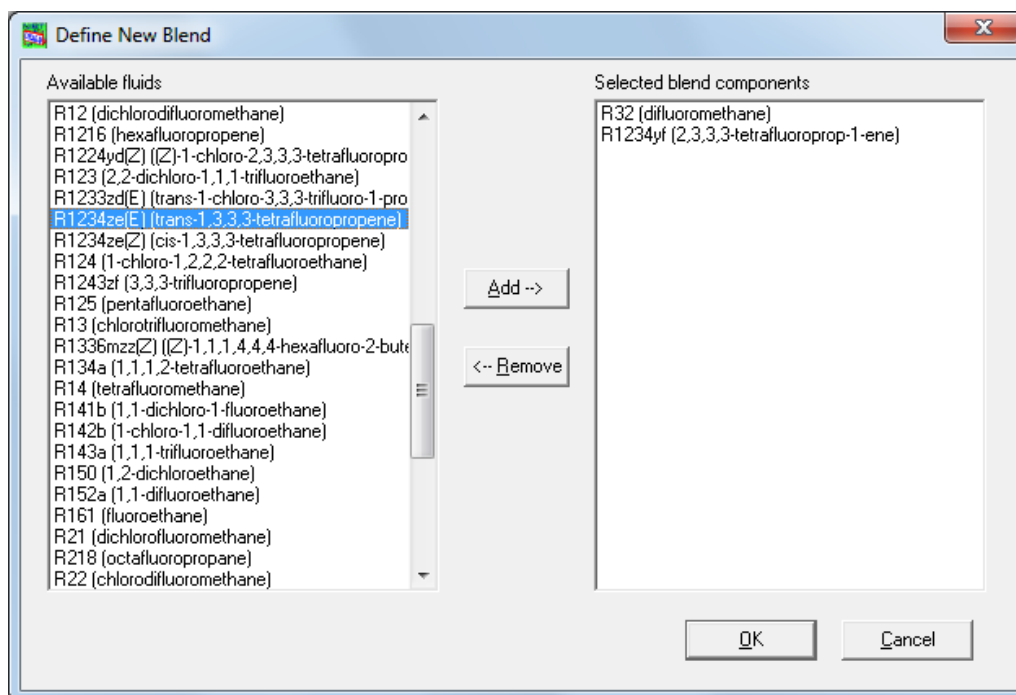


Figure 8. Defining a new blend

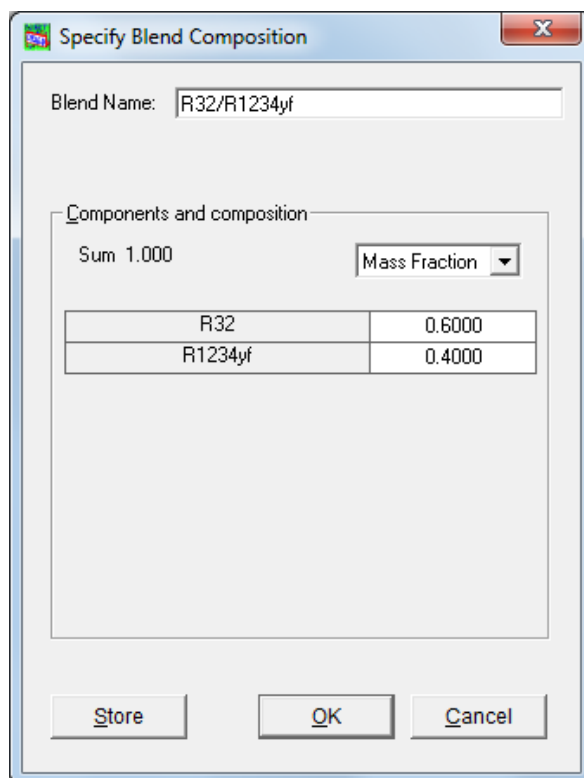


Figure 9. Specifying the new blend composition

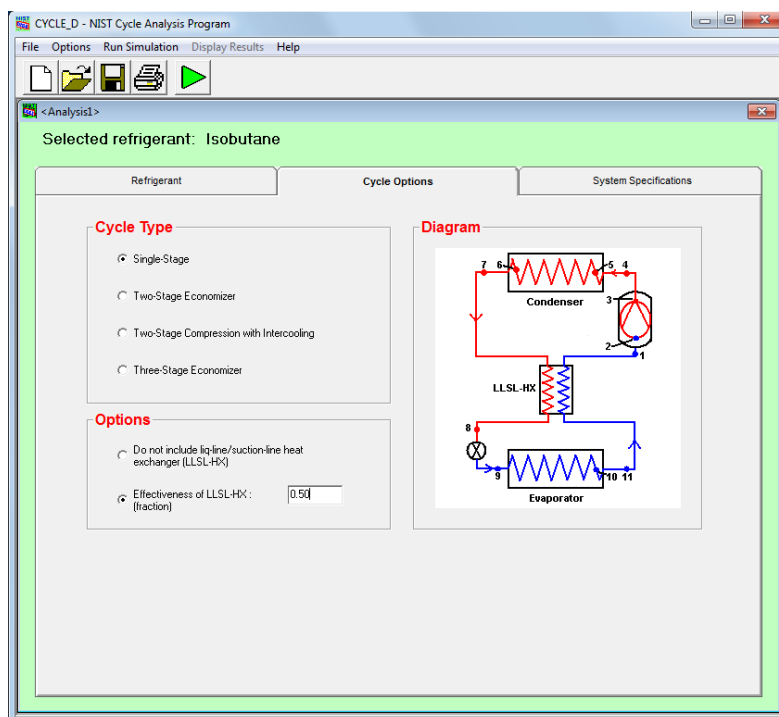


Figure 10. Cycle Options tab

For two-stage compression with intercooling cycles, click the **Two-Stage Compression with Intercooling** radio button and then input the **Intermediate pressure**.

For three-stage economizer cycles, click the **Three-Stage Economizer** radio button and then click either the **Intermediate pressure for high-pressure stage** radio button and the **Intermediate pressure for low-pressure stage** radio button, or the **Optimize the intermediate pressures** radio button, and for both compressors either **Impose same efficiencies for both stages** radio button or **Specify different efficiencies for the two stages** radio button. The **Cycle Options** tab will display these options after the **Three-Stage Economizer** option has been selected.

### **System Specifications Tab**

The set of data required for the system specification depends on the simulated cycle type. Figure 11 presents the specification input for a single-stage system operating in a subcritical regime. In this example, specify the compressor by inputting the compressor isentropic efficiency, compressor volumetric efficiency, and compressor electric motor efficiency, all expressed in fractions. The right-hand-side column includes the net system **Cooling Capacity**, **Vapor Line Pressure Drop** in terms of a drop of dew-point temperature, and **Auxiliary Power** input.

The gas cooler (transcritical cycle) and compressor maps options shown in Figure 11 are only available for the single-stage, subcritical cycle selected in this example. For multi-stage cycles the **System Specifications** tab will solicit input for intermediate pressure(s), which is not applicable to the single-stage system.

#### Using a Compressor Map

The compressor map option is available for a basic subcritical cycle. When the **Switch to Maps** button is clicked, the **System Specifications** window will allow the user to select a compressor from the pulldown menu located in the **Compressor** box, as shown in Figure 12. Once a compressor is chosen, the user selects either the system **Cooling Capacity** or **Capacity Multiplier** option. For simulating a system with a capacity provided by the selected compressor, input the value 1 in the **Capacity Multiplier** input box.

Appendix C explains how to input a new or modify an existing compressor map.

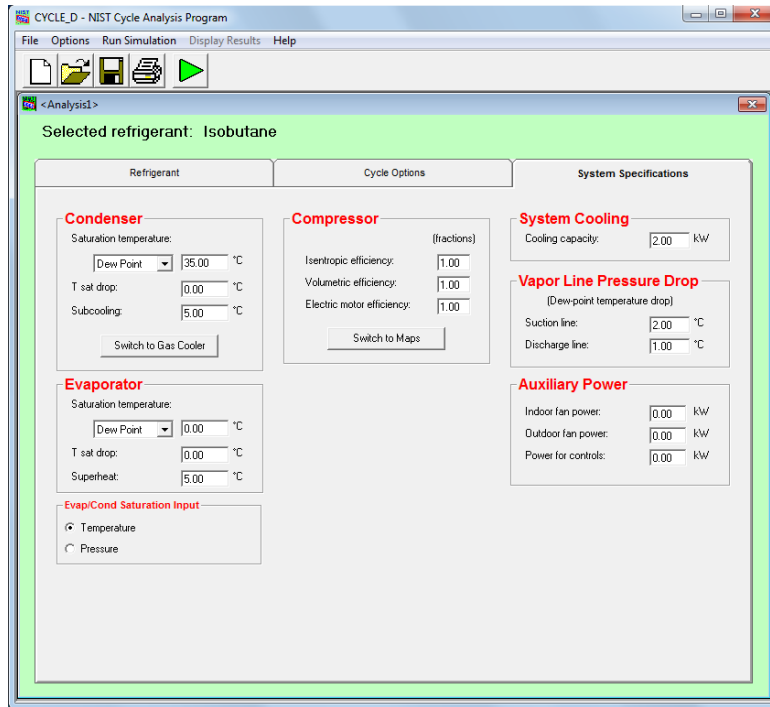


Figure 11. System Specifications tab for a single-stage, subcritical cycle and efficiency-based representation of the compressor

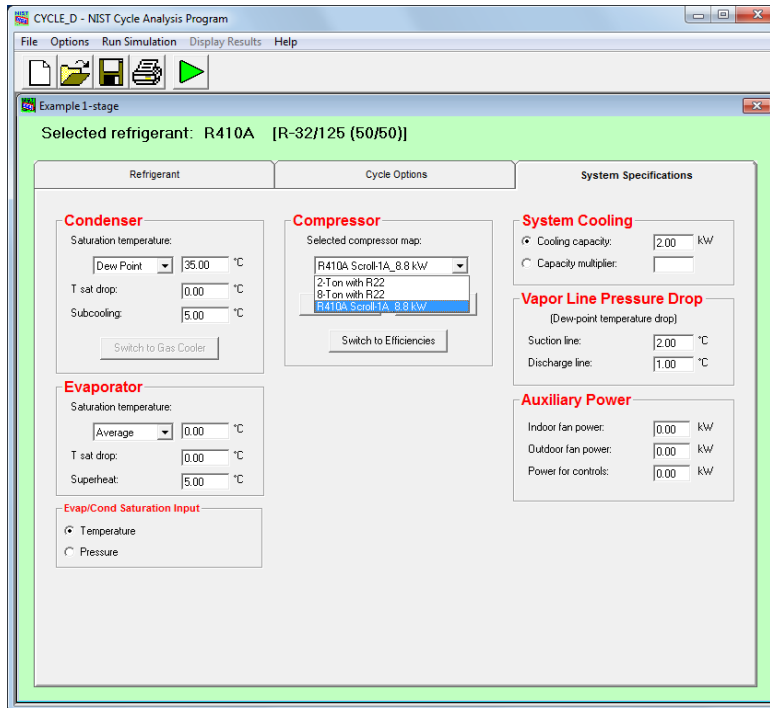


Figure 12. System Specifications tab for a single-stage, subcritical cycle and map-based representation of the compressor

### Entering Data for the Transcritical Cycle

If the high-side pressure exceeds the critical pressure of the refrigerant, the high-side heat exchanger will operate as a gas cooler. To input data for the gas cooler, click the **Switch to Gas Cooler** button; a box will appear for specifying the refrigerant temperature at the gas cooler exit, and the option to specify the gas cooler pressure or to have it optimized by CYCLE\_D (Figure 13). Simulating a transcritical cycle is available only for single-stage systems using the efficiency-based compressor representation.

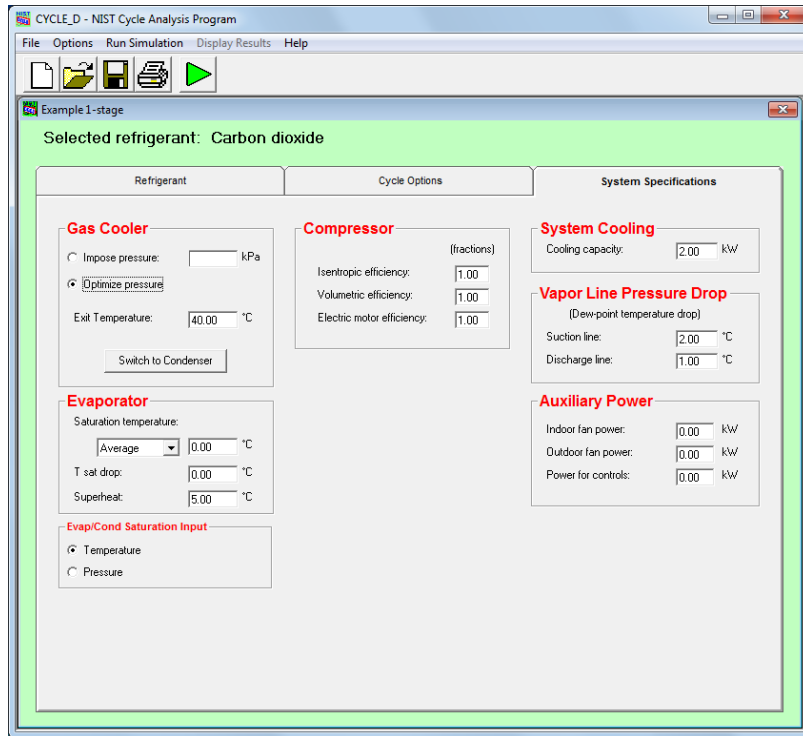


Figure 13. System Specifications tab for a single-stage, transcritical cycle and optimization option selected for the gas cooler pressure

### Loading an Existing File with Input Data

Rather than entering data, the user may opt to open a previously stored input data file and modify it. To open an existing file, click on the **File/Open** menu item, or click the **Open File** button on the power bar. The window shown in Figure 14 will appear. Standard Windows commands are applicable for opening and storing files. After a file is selected and opened, the user should modify the input using different tabs, as explained in the previous section for inputting new data.

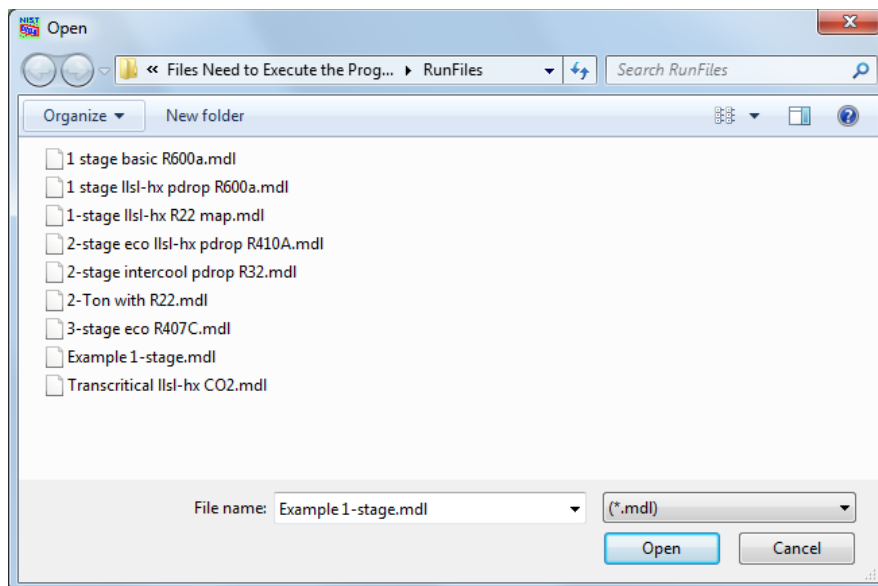


Figure 14. Opening a previously stored input data file

## Executing a Simulation Run

To execute a simulation run, use the **Run Simulation** pull down menu or click on the **Run Simulation** button (the green arrow located on the power bar). The program will first perform various checks to ensure that the input data are valid, and then will proceed with the simulation calculations.

## Presenting Simulation Results

### Summary Results

When the simulation is complete, the **Summary Results** window will appear. The corresponding windows showing system schematic thermodynamic diagrams and LLSL-HX information can be displayed by using either the **Display Results** pulldown menu or the four buttons located on the right-hand side of the power bar. Figure 15 shows a tile with the results windows. The window in the front presents Summary Results for the input data shown in Figures 10 and 11. This data set is also contained in the file Example 1-stage.mdl, which the CYCLE\_D installation module places in the RunFiles subfolder. Refer to Appendix D for the nomenclature.

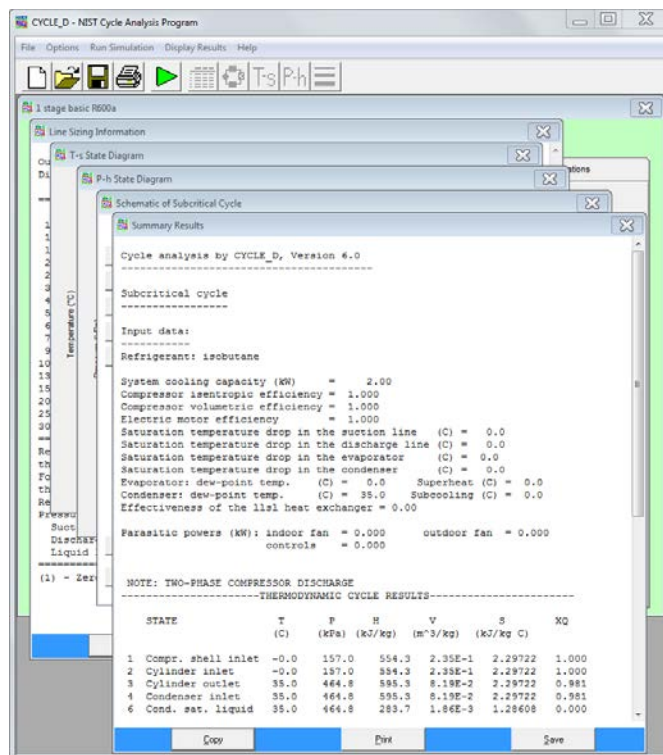


Figure 15. Results windows

### System Schematic Window

Figure 16 shows an example **System Schematic** window with simulation results corresponding to the input data shown in Figures 10 and 11. To display temperature, pressure, density, enthalpy, or entropy values at the various state points, click on the appropriate control button located on the left side of the screen.

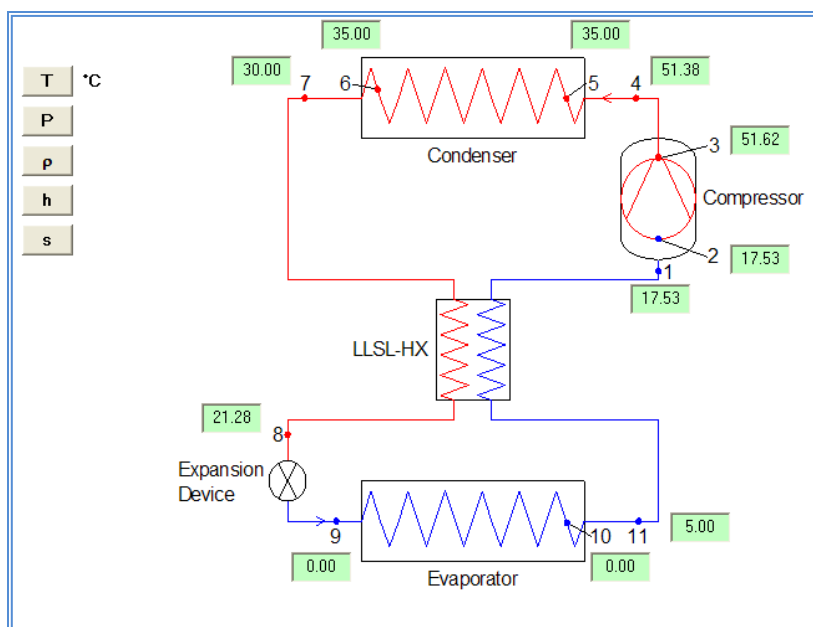


Figure 16. System schematic window

## State Diagram Windows

Figure 17 shows an example **P-h State Diagram**, and Figure 18 shows an example **T-s State Diagram** corresponding to the input data shown in Figures 10 and 11. The minimum and maximum tick marks were modified for both figures within the CYCLE\_D program. To modify (1) the axis labels, (2) the minimum, maximum, and intervals between major tick marks, (3) the font size, (4) the number formatting, (5) the presence or non-presence of gridlines, (6) the specification of the axes in linear or logarithmic scales, and/or (7) the line/symbol type and color for the saturated liquid line, saturated vapor line, or process lines, double-click on the desired figure, after which Figure 19 appears. Note: the **P-h State Diagram** and the **T-s State Diagram** have to be modified independently of one another.

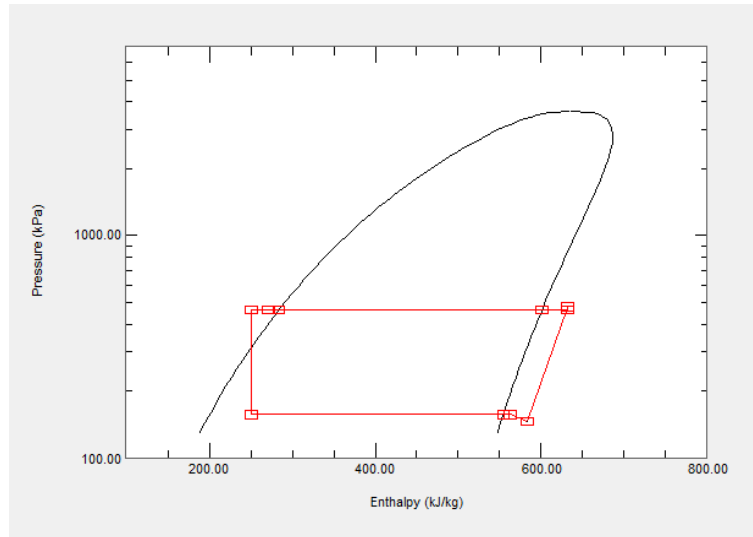


Figure 17. P-h state diagram

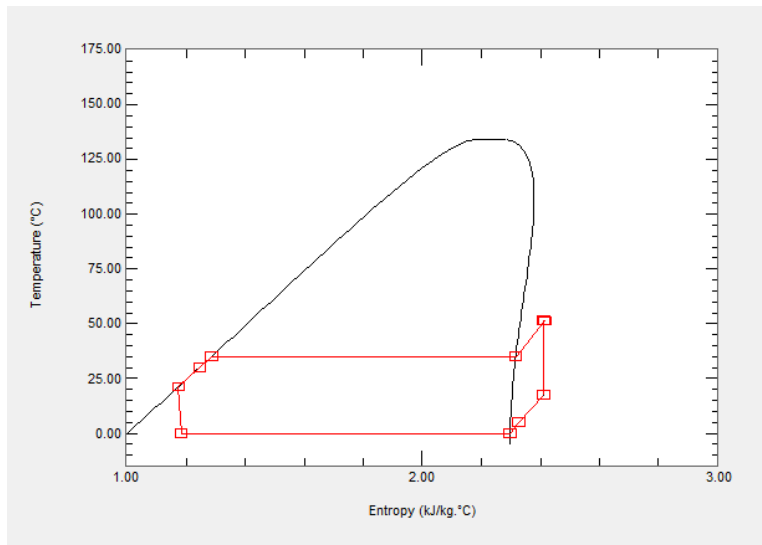


Figure 18. T-s state diagram



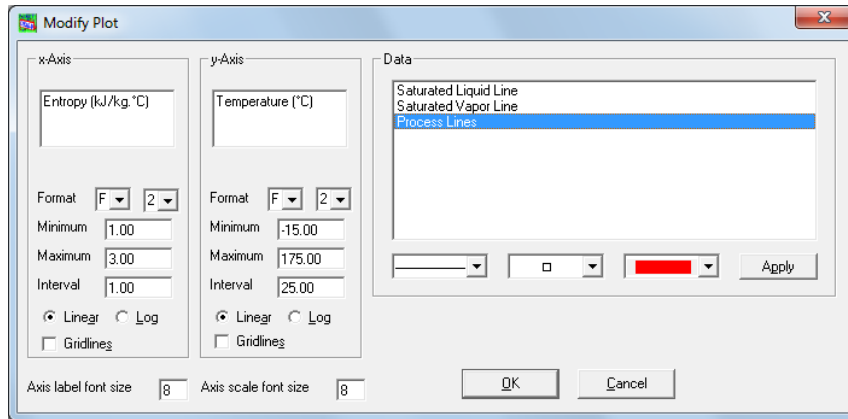


Figure 19. Modifying the P-h or T-s state diagram

### Line Sizing Information

Figure 20 shows the content of the **Line Sizing Information** window corresponding to the input data shown in Figures 10 and 11.

Outside Diameter (mm)	Length Suction line (m)	Vapor Velocity (m/min)	Length Discharge line (m)	Vapor Velocity (m/min)	Length Liquid line (m)	Liquid Velocity (m/min)
9.520	(1)	1.835E+03	8.268E+00	6.675E+02	9.284E+02	1.403E+01
12.700	(1)	9.846E+02	3.670E+01	3.583E+02	4.005E+03	7.532E+00
15.880	(1)	6.130E+02	1.140E+02	2.230E+02	1.216E+04	4.689E+00
19.050	(1)	4.106E+02	2.969E+02	1.494E+02	3.102E+04	3.141E+00
22.220	(1)	2.953E+02	6.520E+02	1.074E+02	6.691E+04	2.259E+00
28.580	(1)	1.732E+02	2.328E+03	6.300E+01	2.316E+05	1.325E+00
34.920	(1)	1.138E+02	6.322E+03	4.141E+01	9.296E+05	8.706E-01
41.280	(1)	8.029E+01	1.449E+04	2.922E+01	1.868E+06	6.142E-01
53.980	(1)	4.619E+01	5.386E+04	1.681E+01	5.644E+06	3.533E-01
66.680	(1)	2.994E+01	1.504E+05	1.090E+01	1.343E+07	2.291E-01
79.380	(1)	2.099E+01	3.490E+05	7.636E+00	2.734E+07	1.605E-01
92.080	(1)	1.551E+01	7.129E+05	5.644E+00	5.003E+07	1.187E-01
104.780	(1)	1.193E+01	1.325E+06	4.341E+00	8.457E+07	9.128E-02
130.180	(1)	7.658E+00	3.768E+06	2.787E+00	2.053E+08	5.859E-02
155.580	(1)	5.327E+00	8.854E+06	1.938E+00	4.243E+08	4.075E-02
206.380	(1)	3.050E+00	3.282E+07	1.110E+00	1.295E+09	2.333E-02
257.180	(1)	1.964E+00	9.194E+07	7.148E-01	3.120E+09	1.503E-02
307.980	(1)	1.361E+00	2.169E+08	4.951E-01	6.504E+09	1.041E-02

Refrigerant line length and velocity values are for straight type L tubing for the refrigerant mass flow rate and pressure drops used in the cycle simulation. that would result in bringing the subcooled refrigerant to flashing.

Refrigerant mass flow rate: 23.0 kg/h

Pressure drops

- Suction line: 10.8 kPa
- Discharge line: 12.8 kPa
- Liquid line: 60.0 kPa

(1) - Calculations are not provided for a non-adiabatic suction line (liquid line/suction line heat exchanger).

Figure 20. Line sizing information

### Saving Input Data

To save the current input data set, use either the **Save** button located on the power bar or one of the options available under the **File** menu item.

## Diagnostic Messages

CYCLE\_D provides stable solutions if the specified cycle operating conditions do not extend beyond the range for which REFPROP 10.0 [1] property routines were validated for a particular working fluid (pure refrigerant or refrigerant mixture). If CYCLE\_D encounters problems during a cycle simulation, it will write diagnostic messages in the file ERREF.TXT located in the default folder. In such cases, the interface will display a note that the messages were written and will provide the option to read them. Note that refrigerant property routines can become unstable in the neighborhood of the critical point.

## Help Menu

Click on the **Help** menu item to access online help. The help file consists of two tabs: **Index** and **Search**. The **Index** tab contains detailed help topics arranged alphabetically. The **Search** tab allows the user to search the contents using keywords. Figure 21 shows a list of help topics in the **Index** tab.

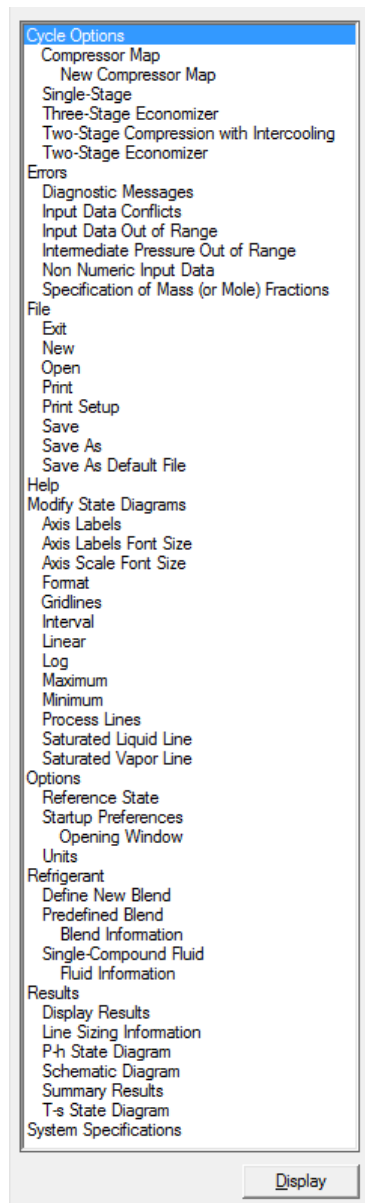


Figure 21. List of help topics in the Help Index tab

## REFERENCES

- [1] Lemmon, E. W., Huber, M.L., McLinden, M.O., 2018. NIST Standard Reference Database 23, NIST Reference Fluid Thermodynamic and Transport Properties - REFPROP, Version 10.0. Standard Reference Data Program, National Institute of Standards and Technology, Gaithersburg, MD 20899, U.S.A.  
<https://www.nist.gov/srd/refprop>
- [2] Performance Rating of Positive Displacement Refrigerant Compressors and Compressor Units, Standard CAN/ANSI/AHRI 540-2015. Air-Conditioning and Refrigeration Institute, Arlington, VA.  
[http://www.ahrinet.org/App\\_Content/ahri/files/STANDARDS/ANSI/CAN.ANSI.AHRI\\_Standard\\_540\\_E\\_2015.pdf](http://www.ahrinet.org/App_Content/ahri/files/STANDARDS/ANSI/CAN.ANSI.AHRI_Standard_540_E_2015.pdf)  
(accessed on September 6, 2018)
- [3] White, M.F., 2005. Viscous Fluid Flow, 3<sup>rd</sup> edition, McGraw-Hill.
- [4] Petukhov, B.S, Kurganov, V.A., Gladuntsov, A.I. 1973. Heat transfer in turbulent pipe flow of gases with variable properties. Heat Transfer, Sov. Res., 5, 109–116.

## Appendix A

### SINGLE-COMPOUND REFRIGERANTS AVAILABLE IN CYCLE\_D

Short Name	Full Chemical Name	T <sub>crit</sub> (°C)	T <sub>crit</sub> (°F)
R-11	trichlorofluoromethane	198.0	388.3
R-12	dichlorodifluoromethane	112.0	233.6
R-13	chlorotrifluoromethane	29.2	84.6
R-131l	trifluoriodomethane	123.3	253.9
R-14	tetrafluoromethane	-45.6	-50.2
R-21	dichlorofluoromethane	178.3	353.0
R-22	chlorodifluoromethane	96.2	205.1
R-23	trifluoromethane	25.9	78.7
R-32	difluoromethane	78.1	172.6
R-40	methyl chloride	143.2	289.7
R-41	fluoromethane	44.1	111.4
R-50	methane	-116.7	-82.7
R-113	1,1,2-trichloro-1,2,2-trifluoroethane	214.1	417.3
R-114	1,2-dichloro-1,1,2,2-tetrafluoroethane	145.7	294.2
R-115	chloropentafluoroethane	80.0	175.9
R-116	hexafluoroethane	19.9	67.8
R-123	1,1-dichloro-2,2,2-trifluoroethane	183.7	362.6
R-124	1-chloro-1,2,2,2-tetrafluoroethane	122.3	252.1
R-125	pentafluoroethane	66.2	151.1
R-134a	1,1,1,2-tetrafluoroethane	101.1	213.9
R-141b	1,1-dichloro-1-fluoroethane	204.2	399.6
R-142b	1-chloro-1,1-difluoroethane	137.1	278.8
R-143a	1,1,1-trifluoroethane	72.9	163.2
R-150	dichloroethane	288.5	551.2
R-152a	1,1-difluoroethane	113.3	235.9
R-161	fluoroethane	102.2	215.9
R-170	ethane	32.2	89.9
R-218	octafluoropropane	161.5	72.0
R-227ea	1,1,1,2,3,3,3-heptafluoropropane	102.8	217.0
R-236ea	1,1,1,2,3,3-hexafluoropropane	139.3	282.7
R-236fa	1,1,1,3,3,3-hexafluoropropane	124.9	256.9
R-245ca	1,1,2,2,3-pentafluoropropane	174.4	346.0
R-245fa	1,1,1,3,3-pentafluoropropane	154.1	309.3
R-365mfc	1,1,1,3,3-pentafluorobutane	186.9	368.3
R-290	propane	96.7	206.1
R-C318	octafluorocyclobutane	115.2	239.4
R-600	butane	152.0	305.6
R-600a	isobutane or 2-methylpropane	134.7	274.5
R-717	ammonia	132.3	270.1
R-744	carbon dioxide	31.1	87.9
R-1123	trifluoroethylene	58.9	137.4
R-1150	ethylene	9.2	48.6
R-1216	hexafluoropropene	85.8	186.4
R-1224yd(Z)	cis-1-chloro-2,3,3,3-tetrafluoroprop-1-ene	155.5	312.0
R-1233zd(E)	1-chloro-3,3,3-trifluoroprop-1-ene	166.5	330.1
R-1234yf	2,3,3,3-tetrafluoroprop-1-ene	94.7	202.5
R-1234ze(E)	trans-1,3,3,3-tetrafluoropropene	109.4	228.9
R-1234ze(Z)	cis-1,3,3,3-tetrafluoropropene	150.1	302.2
R-1243zf	3,3,3-trifluoroprop-1-ene	103.8	218.8
R-1270	propylene or propene	92.4	198.4
R-1336mzz(Z)	cis-1,1,1,4,4,4-hexafluoro-2-butene	171.3	340.3
R-E143a	methyl-trifluoromethyl-ether	104.8	220.6
R-E170	dimethylether (DME) or ethylene oxide	127.2	260.9
R-E245cb2	methyl-pentafluoroethyl-ether	133.7	272.6
R-E245fa2	2,2,2-trifluoroethyl-difluoromethyl-ether	171.7	341.1
R-E347mcc	methyl-heptafluoropropyl-ether	164.6	328.2
CH3CH2CH=CH2	1-butene	146.1	295.1
Cyclo-C3H6	cyclopropane	125.2	257.3
C2H6O	ethanol or ethyl alcohol	240.8	465.4
CH(CH3)3	isobutene or 2-methyl-1-propene	144.9	292.9

Short Name	Full Chemical Name	T <sub>crit</sub> (°C)	T <sub>crit</sub> (°F)
(CH <sub>3</sub> ) <sub>2</sub> CH(CH <sub>2</sub> ) <sub>2</sub> CH <sub>3</sub>	isohexane or 2-methylpentane	224.6	436.2
(CH <sub>3</sub> ) <sub>2</sub> CHCH <sub>2</sub> CH <sub>3</sub>	isopentane or 2-methylbutane	187.2	369.0
CH <sub>3</sub> OH	methanol	239.5	463.0
CH <sub>3</sub> -3(CH <sub>2</sub> )-CH <sub>3</sub>	pentane	196.6	385.8
C <sub>3</sub> H <sub>6</sub> O	acetone	235.0	454.9
C <sub>4</sub> H <sub>8</sub>	cis-butene or cis-2-butene	162.6	324.7
C <sub>4</sub> H <sub>8</sub>	trans-butene or trans-2-butene	155.5	311.8
C <sub>5</sub> F <sub>12</sub>	perfluoropentane or dodecafluoropentane	147.4	297.3
C <sub>5</sub> H <sub>12</sub>	neopentane or 2,2-dimethylpropane	160.6	321.1
C <sub>6</sub> H <sub>6</sub>	benzene	288.9	552.0
C <sub>6</sub> H <sub>12</sub>	cyclohexane	280.5	536.9
C <sub>6</sub> H <sub>14</sub>	hexane	234.7	454.4
C <sub>7</sub> H <sub>16</sub>	heptane	267.0	512.6
C <sub>12</sub> H <sub>26</sub>	dodecane	385.0	724.9
SF <sub>6</sub>	sulfur hexafluoride	45.6	114.0

The user can add new fluids to CYCLE\_D by placing new fluid files into the "fluids" folder. The fluid file must be compatible with REFPROP [1], and its name must start with "R" or "r" (e.g., Rnew2.fld or r754.fld will be recognized by CYCLE\_D as fluid files). The 'fluids' folder is a subdirectory of the folder selected for the installation of CYCLE\_D.

## Appendix B

### PREDEFINED REFRIGERANT BLENDS AVAILABLE IN CYCLE\_D

ASHRAE Designation	Composition Components	(mass %)	T <sub>crit</sub> (°C)	T <sub>crit</sub> (°F)
R-401A	R-22/152a/124	53/13/34	106.9	224.3
R-401B	R-22/152a/124	61/11/28	104.6	220.0
R-401C	R-22/152a/124	33/15/52	111.7	233.1
R-402A	R-125/290/22	60/2/38	74.8	166.6
R-402B	R-125/290/22	38/2/60	82.1	179.7
R-403A	R-290/22/218	5/75/20	84.0	183.2
R-403B	R-290/22/218	5/56/39	75.4	167.8
R-404A	R-125/143a/134a	44/52/4	72.1	161.8
R-405A	R-22/152a/142b/C318	45/7/5.5/42.5	104.3	219.8
R-406A	R-22/600a/142b	55/4/41	115.5	239.8
R-407A	R-32/125/134a	20/40/40	82.3	180.1
R-407B	R-32/125/134a	10/70/20	74.8	166.6
R-407C	R-32/125/134a	23/25/52	86.1	187.1
R-407D	R-32/125/134a	15/15/70	91.6	196.9
R-407E	R-32/125/134a	25/15/60	88.6	191.5
R-407F	R-32/125/134a	30/30/40	82.6	180.7
R-407G	R-32/125/134a	2.5/2.5/95	99.5	211.0
R-407H	R-32/125/134a	32.5/15/52.5	86.5	187.8
R-408A	R-125/143a/22	7/46/47	82.9	181.3
R-409A	R-22/124/142b	60/25/15	110.1	230.1
R-409B	R-22/124/142b	65/25/10	107.6	225.7
R-410A	R-32/125	50/50	71.3	160.4
R-410B	R-32/125	45/55	70.8	159.5
R-411A	R-1270/22/152a	1.5/87.5/11.0	88.9	191.9
R-411B	R-1270/22/152a	3/94/3	95.7	204.2
R-412A	R-22/218/142b	70/5/25	107.1	224.8
R-413A	R-218/143a/600a	9/88/3	95.3	203.6
R-414A	R-22/124/600a/142b	51/28.5/16.5	111.4	232.5
R-414B	R-22/124/600a/142b	50/39/1.5/9.5	110.7	231.3
R-415A	R-22/152a	82/18	96.7	206.0
R-415B	R-22/152a	25/75	109.9	229.9
R-416A	R-124/R134a/600	39.5/59.0/1.5	106.3	223.3
R-417A	R-125/134a/600	46.6/50.0/3.4	85.4	185.8
R-417B	R-125/134a/600	79.0/18.3/2.7	74.1	165.3
R-417C	R-125/134a/600	19.5/78.8/1.7	94.6	202.2
R-418A	R-290/22/152a	1.5/96/2.5	95.6	204.2
R-419A	R-125/134a/DME	77/19/4	83.5	182.3
R-419B	R-125/134a/DME	48.5/48/3.5	91.1	196.0
R-420A	R-134a/142b	88/12	104.8	220.6
R-421A	R-125/134a	58/42	82.8	181.0
R-421B	R-125/134a	85/15	72.4	162.3
R-422A	R-125/134a/600a	85.1/11.5/3.4	70.7	159.3
R-422B	R-125/134a/600a	55/42/3	82.0	179.6
R-422C	R-125/134a/600a	82/15/3	72.1	161.7
R-422D	R-125/134a/600a	65.1/31.5/3.4	78.2	172.8
R-422E	R-125/134a/600a	58/39.3/2.7	81.1	178.0
R-423A	R-134a/227ea	52.5/47.5	99.1	210.5
R-424A	R-125/134a/600a/600/601a	50.5/47/0.9/1/0.6	84.7	184.4
R-425A	R-32/134a/227ea	18.5/69.5/12	93.9	210.4
R-426A	R-125/134a/600/601a	5.1/93/1.3/0.6	99.0	210.2
R-427A	R-32/125/143a/134a	15/25/10/50	85.5	185.9
R-428A	R-125/143a/290/600a	77.5/20/0.6/1.9	68.0	154.4
R-429A	DME/152a/600a	60/10/30	122.0	251.5
R-430A	R-152a/600a	76/24	107.0	224.6
R-431A	R-290/152a	71/29	91.8	197.2
R-432A	R-1270/DME	80/20	97.3	207.1
R-433A	R-1270/290	30/70	94.4	201.9
R-433B	R-1270/290	5/95	96.3	205.4
R-433C	R-1270/290	25/75	94.8	202.6
R-434A	R-125/143a/134a/600a	63.2/18/16/2.8	74.1	165.5
R-435A	DME/R-152a	80/20	123.1	253.5
R-436A	R-290/600a	56/44	115.9	240.6

ASHRAE Designation	Composition Components	(mass %)	T <sub>crit</sub> (°C)	T <sub>crit</sub> (°F)
R-436B	R-290/600a	52/48	117.4	243.4
R-437A	R-125/134a/600/601a	19.5/78.5/1.4/0.6	95.5	203.9
R-438A	R-32/125/134a/600/601a	8.5/45/44.2/1.7/0.6	83.8	182.9
R-439A	R-32/125/600a	50/47/3	70.3	158.6
R-440A	R-290/134a/152a	0.6/1.6/97.8	112.7	234.8
R-441A	R-170/290/600a/600	3/55/6/36	118.5	245.2
R-442A	R-32/125/134a/152a/227ea	31/31/30/3/5	82.1	179.9
R-443A	R-1270/290/600a	55/40/5	96.0	204.8
R-444A	R-32/152a/1234ze(E)	12/5/83	106.3	223.4
R-444B	R-32/152a/1234ze(E)	41.5/10/48.5	95.7	204.2
R-445A	R-744/134a/1234ze(E)	6/9/85	106.1	222.9
R-446A	R-32/1234ze(E)/600	68/29/3	86.1	186.9
R-447A	R-32/125/1234ze(E)	68/3.5/28.5	85.3	185.5
R-447B	R-32/125/1234ze(E)	68/8/24	78.9	174.1
R-448A	R-32/125/1234yf/134a/1234ze(E)	26/26/20/21/7	82.7	180.8
R-449A	R-32/125/1234yf/134a	24.3/24.7/25.3/25.7	82.1	179.7
R-449B	R-32/125/1234yf/134a	25/24/23/27	82.2	180.0
R-449C	R-32/125/1234yf/134a	20/20/31/29	86.8	188.3
R-450A	R-134a/1234ze(E)	42/58	104.5	220.0
R-451A	R-1234yf/134a	89.8/10.2	94.4	201.9
R-451B	R-1234yf/134a	88.8/11.2	94.3	201.8
R-452A	R-32/125/1234yf	11/59/30	75.1	167.1
R-452B	R-32/125/1234yf	67/7/26	77.1	170.8
R-452C	R-32/125/1234yf	12.5/61/26.5	74.1	165.3
R-453A	R-32/125/134a/600/601a	20/20/53.8/0.6/0.6	88.0	190.3
R-454A	R-32/1234yf	35/65	81.7	179.1
R-454B	R-32/1234yf	69/31	78.1	172.6
R-454C	R-32/1234yf	21.5/78.5	79.3	174.7
R-455A	R-744/32/1234yf	3/21.5/75.5	85.6	186.1
R-456A	R-32/134a/1234ze(E)	6/45/49	102.7	216.8
R-457A	R-32/1234yf/152a	18/70/12	91.3	196.3
R-458A	R-32/125/134a/227ea/236fa	20.5/4/61.4/13.5/0.6	91.5	196.8
R-459A	R-32/1234yf/1234ze(E)	68/26/6	79.6	175.3
R-459B	R-32/1234yf/1234ze(E)	21/69/10	87.5	189.4
R-460A	R-32/125/134a/1234ze(E)	12/52/14/22	83.6	182.5
R-460B	R-32/125/134a/1234ze(E)	28/25/20/27	88.1	190.5
R-500	R-12/152a	73.8/26.2	102.1	215.7
R-501	R-22/12	75/25	95.9	204.5
R-502	R-22/115	48.8/51.2	81.5	178.7
R-503	R-23/13	40.1/59.9	18.3	64.1
R-504	R-32/115	48.2/51.8	62.2	144.0
R-507A	R-125/143a	50/50	70.6	159.1
R-508A	R-23/116	39/61	10.2	50.3
R-508B	R-23/116	46/54	11.2	52.2
R-509A	R-22/218	44/56	68.5	155.2
R-510A	DME/600a	88/12	125.7	258.2
R-511A	R-290/DME	95/5	97.0	206.6
R-512A	R-134a/152a	5/95	112.8	235.1
R-513A	R-1234yf/134a	56/44	94.9	202.8
R-513B	R-1234yf/134a	58.5/41.5	94.8	202.6
R-515A	R-1234ze(E)/227ea	88/12	108.2	226.7

## Appendix C

### COMPRESSOR MAPS

#### Compressor Map Formats

CYCLE\_D uses three types of compressor maps for representing the compressor performance. Their format is give below.

##### Compressor map # 1 (based on the ANSI/AHRI Standard 540 [2])

$$X = B1 + B2 \cdot T_s + B3 \cdot T_d + B4 \cdot T_s^2 + B5 \cdot T_s \cdot T_d + B6 \cdot T_d^2 + B7 \cdot T_s^3 + B8 \cdot T_d \cdot T_s^2 + B9 \cdot T_s \cdot T_d^2 + B10 \cdot T_d^3$$

where

B1-B10 = correlation coefficients

$T_s$  = compressor suction dew-point temperature, °C (°F)

$T_d$  = compressor discharge dew-point temperature, °C (°F)

X = represents (as designated): refrigerant mass flow rate, kg/s (lb/h) or power input W, (W)

##### Compressor map # 2 (pressure-based correlation)

$$X = B1 + B2 \cdot P_d + B3 \cdot P_s + B4 \cdot P_d^{0.9} + B5 \cdot P_s^{0.89} + B6 \cdot P_s \cdot P_d$$

where

B1-B6 = correlation coefficients

$P_s$  = suction pressure, kPa (psia)

$P_d$  = discharge pressure, kPa (psia)

X = represents (as designated): cooling capacity, W (Btu/h) or power input W

##### Compressor map # 3 (modified temperature-based correlation)

$$X = B1 + B2 \cdot T_d + B3 \cdot T_d^2 + B4 \cdot T_s + B5 \cdot T_s \cdot T_d + B6 \cdot T_s \cdot T_d^2 + B7 \cdot T_s^2 + B8 \cdot T_d \cdot T_s^2 + B9 \cdot T_s^2 \cdot T_d^2$$

where

B1-B9 = correlation coefficients

$T_s$  = compressor suction dew-point temperature, °C (°F)

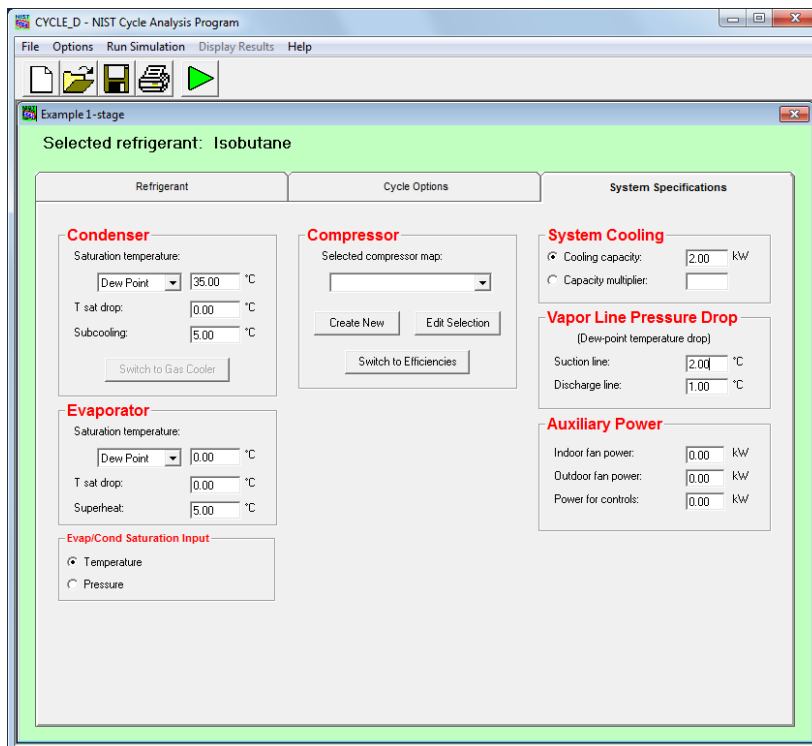
$T_d$  = compressor discharge dew-point temperature, °C (°F)

X = represents (as designated): cooling capacity, W (Btu/h) or power input kW



## Preparing a New Compressor Map

In the **System Specifications** tab, click the **Switch to Maps** button, and then click the **Create New** button shown in Figure C1.



**Figure C1. System Specifications tab showing the Create New and Edit Selection compressor map options after a click on the Switch to Maps button**

Click the **Create New** to have the input window displayed for compressor maps (Figure C2). The window has radio buttons for selecting one of the three compressor maps and their units. The units selected in the window are applicable to the compressor map output, coefficients and temperature unit for which the coefficients were developed. This unit selection does not override the units the user selected outside of this window for the input data and output of simulation results.

The refrigerant selection in this window will override the prior selection of the refrigerant within the **Refrigerant** tab (Figure 1). The refrigerants available for selection in this window are those available within the **Refrigerant** tab as **Single-Compound Fluid** or **Predefined Blend**. If the compressor uses a blend that is not available, the user needs to define this blend first using the **Define New Blend** (Figure 1) button before inputting compressor coefficients.

Compressor Data

File Name:

Compressor Description:

Compressor Map

- CAN/ANSI/AHRI Standard 540
- Pressure-based
- Modified temperature-based

Units

- SI
- I-P

Note: No conversion is available between SI and I-P units for compressor data.

Coefficient	Power Input (W)	Refrigerant mass flow rate (kg/s)
1	<input type="text"/>	<input type="text"/>
2	<input type="text"/>	<input type="text"/>
3	<input type="text"/>	<input type="text"/>
4	<input type="text"/>	<input type="text"/>
5	<input type="text"/>	<input type="text"/>
6	<input type="text"/>	<input type="text"/>
7	<input type="text"/>	<input type="text"/>
8	<input type="text"/>	<input type="text"/>
9	<input type="text"/>	<input type="text"/>
10	<input type="text"/>	<input type="text"/>

Suction superheat:  °C

Condenser subcooling:  °C

Refrigerant:

Print OK Cancel

Figure C2. Input data window for compressor map data (CAN/ANSI/AHRI Standard 540-2015 map selected [2])

## Appendix D

### NOMENCLATURE USED FOR REPORTING SIMULATION RESULTS

This appendix presents the symbol convention used for simulation results in the order they appear on the printout. Self-explanatory output is omitted here. Note that the printout varies somewhat between simulation options.

#### Thermodynamic Cycle Results

T	= temperature
P	= pressure
h	= specific enthalpy
v	= specific volume
s	= specific entropy
XQ	= mass-based quality
Work	= compressor motor energy consumption per unit mass of circulated refrigerant; $Work = (h(3)-h(2))/\eta_{comp\ motor}$ where $\eta_{comp\ motor}$ - compressor motor efficiency (fraction)
Qevap	= specific evaporator capacity
Qcond	= specific condenser capacity
COPc	= coefficient of performance in the cooling mode
COPh	= coefficient of performance in the heating mode
Two-phase glide, evaporator	= temperature difference between saturated vapor and evaporator inlet
Two-phase glide, condenser	= temperature difference between saturated vapor and saturated liquid
Condenser superheat	= temperature difference between condenser inlet and saturated vapor
P(3)/P(2)	= compression pressure ratio
Volumetric capacity, cooling	= $Q_{evap}/v(2)$
Volumetric capacity, heating	= $Q_{cond}/v(2)$

#### Compressor and System Results

$m^3/h$ or cfm	= compressor volumetric output
$m^3/h/kW$ or cfm/ton	= (compressor volumetric output) / (cooling capacity of evaporator) {1 ton = 12000 Btu/h}
Total power	= sum of powers of compressor, indoor fan, outdoor fan, and controls
COPc,sys	= (system cooling capacity)/(total power)
COPh,sys	= (system heating capacity)/(total power)

## Appendix E

### UNITS, CHECKS AND WARNINGS

There are a number of built-in checks and warnings in CYCLE\_D. Efforts have been made in developing the system to make the checks self-explanatory. Presented below are: (1) an explanation of consistency in units and (2) some examples of the run time checks and warnings.

#### (1) Systems of Units

Users may select either I-P or SI units.

##### I-P Units:

By selecting "I-P units," **temperatures** are entered in °F.

##### SI Units:

By selecting "SI units," **temperatures** are entered in °C (**SI – Celsius** option) or **K (SI – Kelvin** option).

##### Common Bases:

In both systems, mass composition and efficiency values are entered as decimals not greater than unity. (**Note, decimals, not percentages**)

#### (2) Checks and Warnings

The following are examples of checks and warnings built into the CYCLE\_D system:

1. In selecting the number of refrigerants in a new mixture, the number must be from 2 to 10.
2. If the sum of refrigerant mass (or mole) fractions is greater than unity, an error message is issued.
3. Compressor isentropic efficiency values must be greater than or equal to 0.05 and less than or equal to unity.
4. Compressor volumetric efficiency values must be greater than or equal to 0.05 and less than or equal to unity.
5. Compressor motor efficiency values must be greater than or equal to 0.05 and less than or equal to unity.
6. The evaporator saturation temperature drop specification is unrealistic.
7. The bubble-point temperature (or pressure) of refrigerant in the condenser must be greater than the dew-point temperature (or pressure) of refrigerant in the evaporator.
8. The condenser temperature (or pressure) must be greater than the evaporator temperature (or pressure).
9. The condenser saturation temperature (or pressure) must be less than the refrigerant critical temperature (or pressure).
10. The gas cooler refrigerant pressure must be greater than the critical pressure.
11. The intermediate pressures for the two-stage economizer cycle, the two-stage compression with intercooling cycle, and the three-stage economizer cycle must fall between the evaporator and condenser pressures.
12. For the three-stage economizer cycle, the intermediate pressure of the low-pressure stage must be below the intermediate pressure of the high-pressure stage.

## Appendix F

### CONTACTS

If you have comments or questions about the database, the Standard Reference Data Program would like to hear from you. Also, if you should have any problems with the CDs or installation, please let us know by contacting:

Cindy McKneely  
National Institute of Standards and Technology  
Office of Data Informatics (ODI)  
100 Bureau Drive, MS 8550  
Gaithersburg, MD 20899-8550  
Phone: 301-975-4332  
E-mail: [data@nist.gov](mailto:data@nist.gov)

If you have questions or problems pertaining to the use of CYCLE\_D, contact:

Piotr A. Domanski  
National Institute of Standards and Technology  
Engineering Laboratory  
100 Bureau Drive, MS 8631  
Gaithersburg, MD 20899-8631  
E-mail: [piotr.domanski@nist.gov](mailto:piotr.domanski@nist.gov)