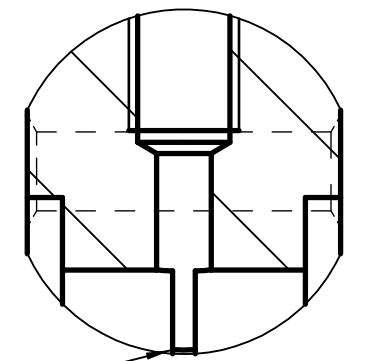
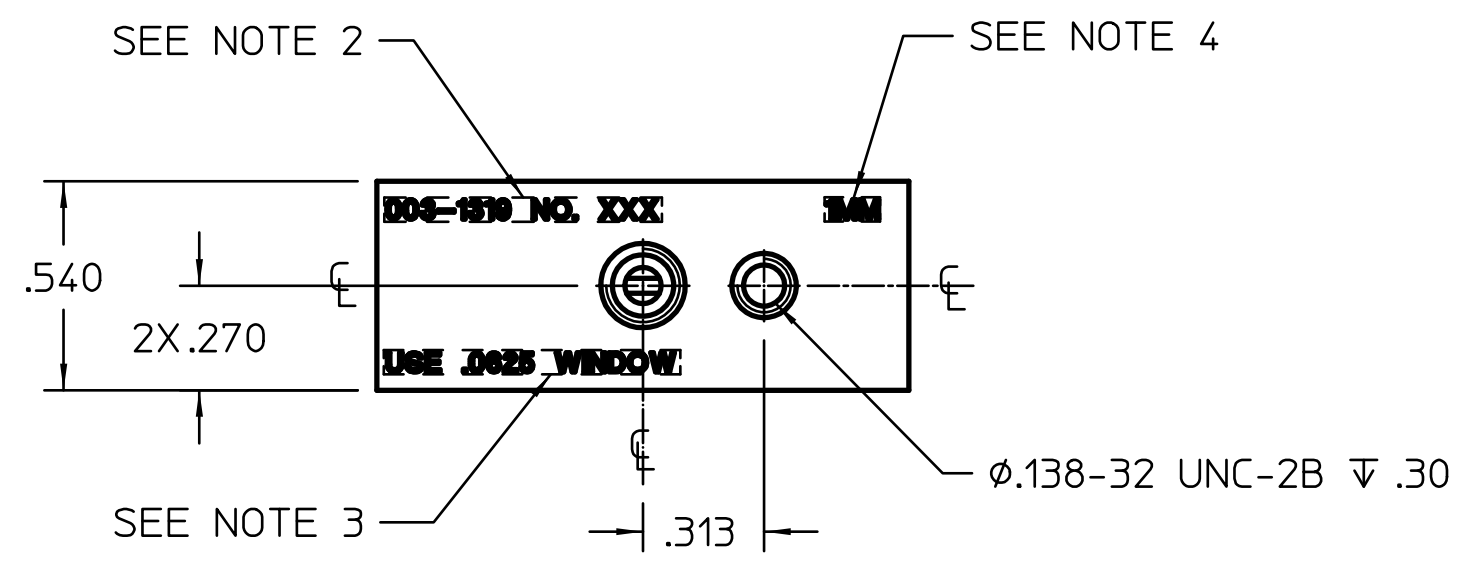
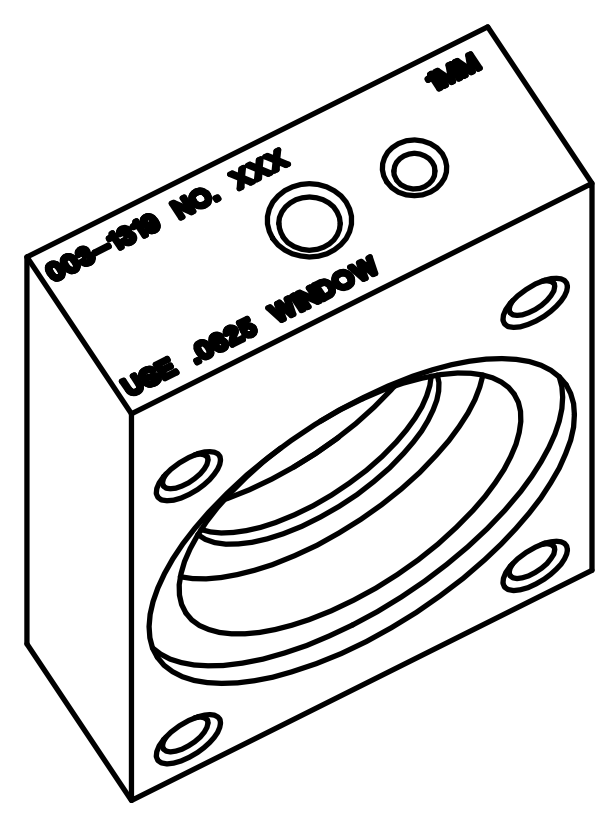
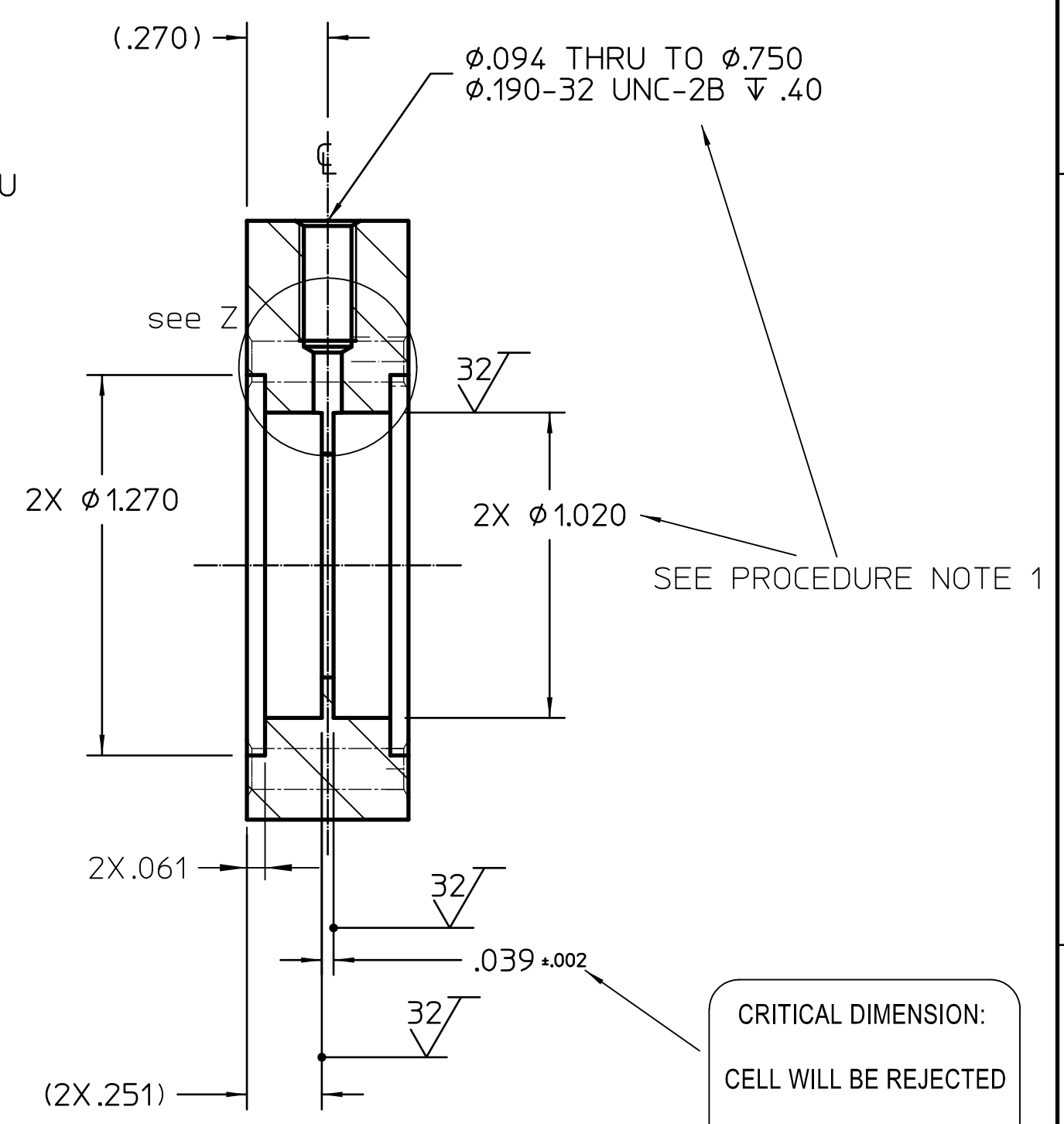
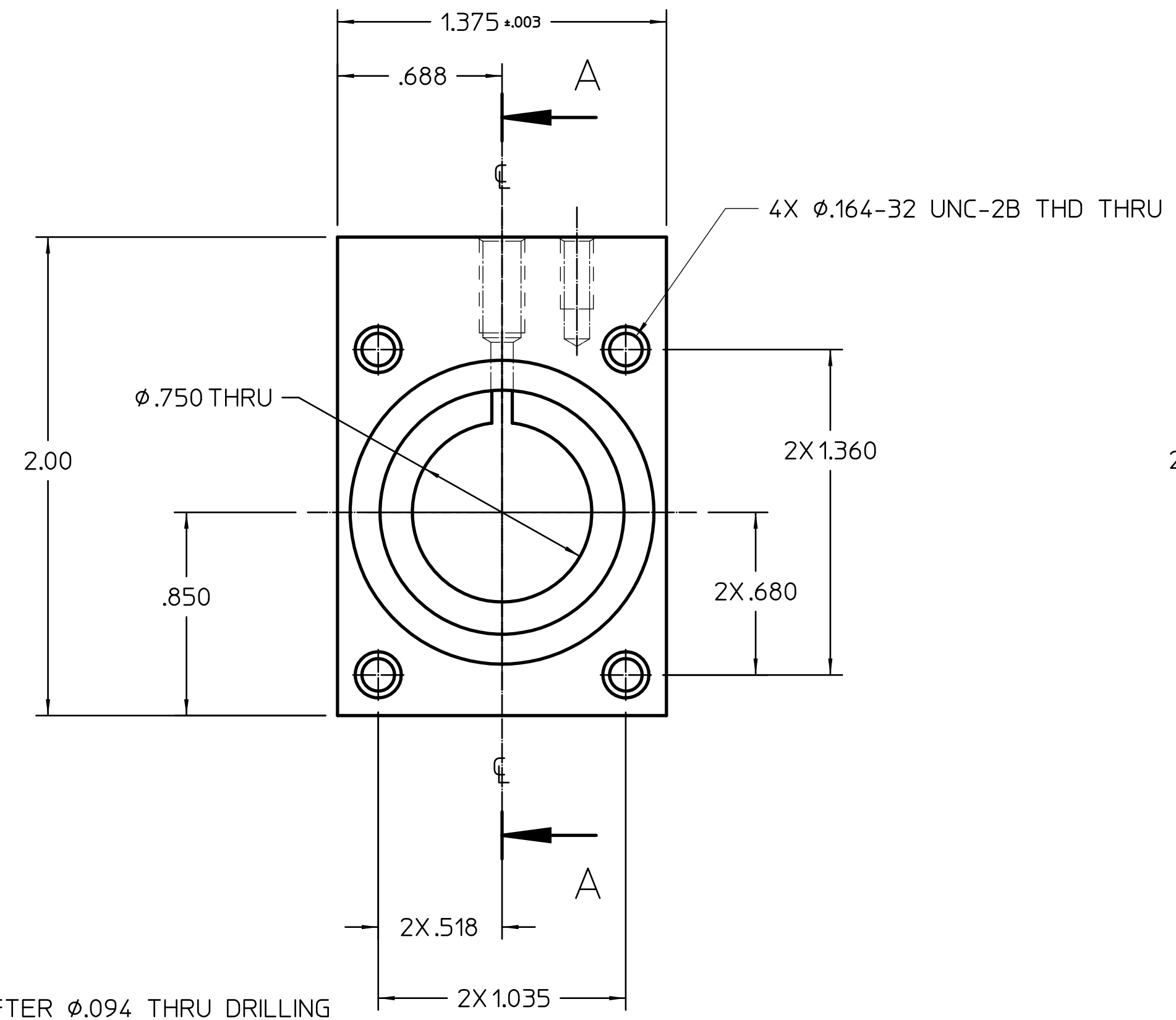


REVISIONS				
No.	ZONE	ECN	CHANGE	DATE
2				



MAKE SURE NO BURS 2X ALL AROUND

Z
SCALE 3:1



CRITICAL DIMENSION:
CELL WILL BE REJECTED
IF OUT OF TOLERANCE

SECTION A-A

PROCEDURE NOTES:
1. PERFORM MACHINING OF 2X Ø1.020 AFTER Ø.094 THRU DRILLING

- NOTES:
- BREAK ALL SHARP EDGS .005 TO .015
 - STEEL STAMP, SCRIBE, OR ETCH "003-1319 NO." FOLLOWED BY A SEQUENTIAL NUMBER ON EACH BODY USING INCREMENTS OF 1 STARTING WITH THE NUMBER "N". (REFERENCE ORDER FOR VALUE OF "N") AND ENDING WITH ["N" + QUANTITY ORDERED -1] ie: (FOR "N"=1) NO. 1, NO. 2, NO. 3 ... USING .12 HIGH CHARACTERS LOCATED APPROX WHERE SHOWN.
 - STEEL STAMP, SCRIBE, OR ETCH "USE .0625 WINDOW" USING .12 HIGH CHARACTERS LOCATED APPROX WHERE SHOWN.
 - STEEL STAMP, SCRIBE, OR ETCH "1 MM" USING .12 HIGH CHARACTERS LOCATED APPROX WHERE SHOWN.
 - USE WITH RETIANING PLATE 003-1320 AND O-RING AS568A DASH NUMBER 117.

MATERIAL SPECIFICATION		APPROVALS		UNLESS OTHERWISE SPECIFIED DIMENSIONS ARE IN INCHES TOLERANCES ARE:		NIST		CENTER FOR NEUTRON RESEARCH	
MATERIAL TITANIUM, GRADE 2	ENGR	ENGR	DATE	DECIMALS .XXX ±.005	FRACTIONS .XX ±.015	National Institute of Standards and Technology Technology Administration, U.S. Department of Commerce		100 BUREAU DRIVE GAITHERSBURG, MD. 20899	
FORM BAR	SIZE	ENGR MNGR	DATE	ANGLES ±.5	DO NOT SCALE DRAWING		1mm CELL BODY		
MODEL DATA		DRAWING DATA		THIRD ANGLE PROJECTION		FOR			
MODEL NAME cq_1mmcell_body_ru	STATE work	DATE 11/3/14 11:56 AM	DATE 11/3/14 11:56 AM	SIZE C		DWG No. 003-1319		REV 2	
CREATOR allen	DATE 1/14/05 10:35 AM	VERSION 2	SHEETS 1	SCALE 2:1		RELEASE DATE		SHEET 1 of 1	
DRAFTER cedric	DATE 11/3/14 11:56 AM	ENGINEER allen	DATE 11/4/14 5:53 PM	CALC. WT.		ACT. WT.		DIM. & TOL. PER ANSI Y14.5M-1982	