

## Appendix A

### NTEP Statistics Report

#### Item 5200-1

<b>General NTEP Statistics</b>	<b>Last Year</b>	<b>This Year to Date</b>
	10/01/15 - 9/30/16	10/01/16 - 3/31/17
Total Applications Processed	(20) 297	(18) 164
Applications Completed	266	174
Certificates Issued	240	157
Active NTEP Certificates	1961	1998

( ) = Reactivations

<b>Assignments to Labs per Year</b>	10/1/15 - 9/30/16	10/01/16 - 3/31/17
California	37	9
Canada	3	3
GIPSA-IL	1	0
GIPSA-KC	9	0
Maryland	(4) 50	(1) 21
New York	14	(7) 17
NIST Force Group	8	2
North Carolina	10	7
Ohio	(2) 52	45
Oregon	0	0
NTEP Field	(1) 5	1
NTEP Administrator	104	64
Applications Not Yet Assigned to a Lab		3

( ) = Reassignments from another lab

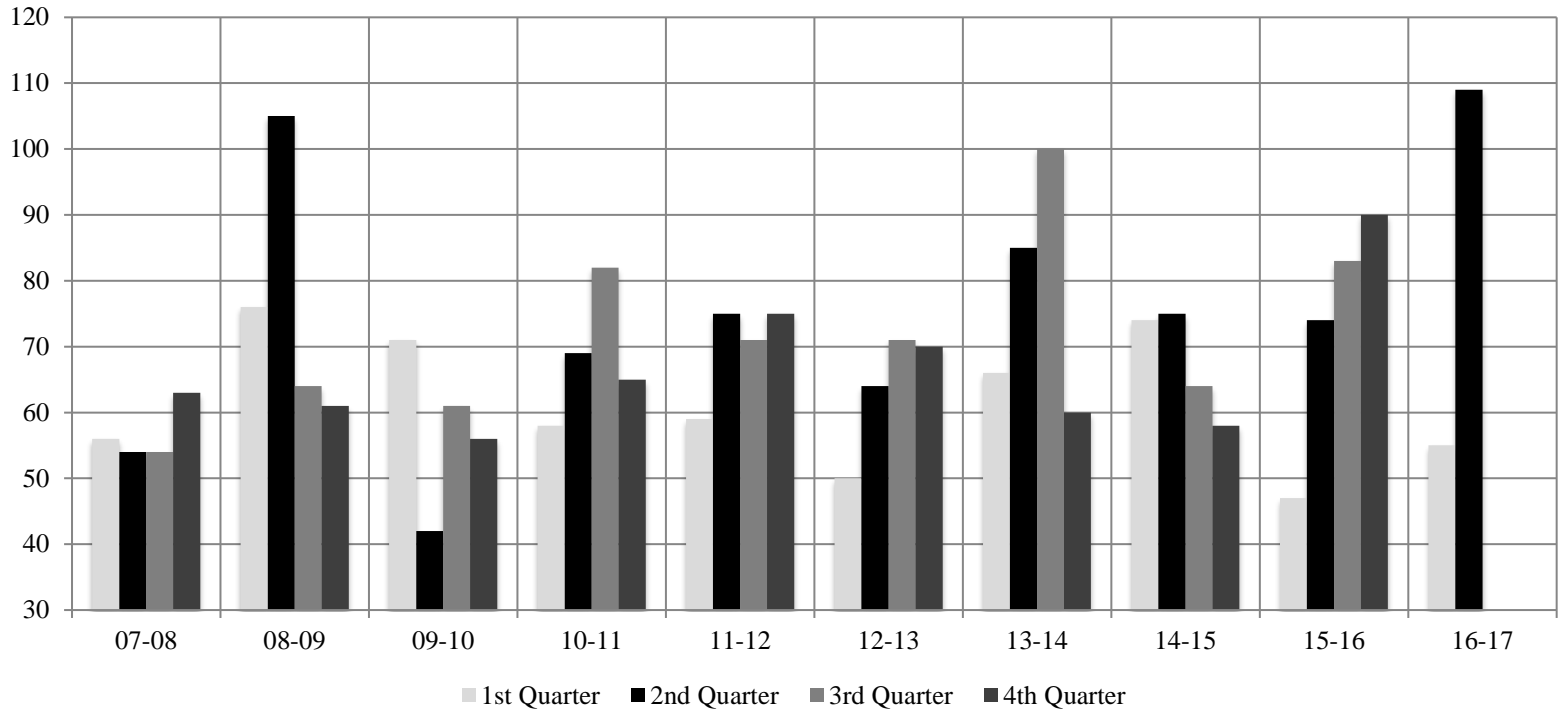
<b>Process Statistics</b>	<b>10/2008 - Present</b>
Average Time to Assign an Evaluation	4.6 Days
Average Time to Complete an Evaluation	85.7

### Report on Evaluations in Progress

<b>Evaluations in Progress</b>	<b>0-3 Months</b>	<b>3-6 Months</b>	<b>6-9 Months</b>	<b>9-12 Months</b>	<b>Over 1 Year</b>	<b>Total</b>
March 31, 2012	36	12	14	12	18	92
June 30, 2013	53	18	6	6	19	102
September 30, 2013	44	32	5	4	21	106
December 31, 2013	41	25	24	2	24	116
March 31, 2014	53	23	13	17	11	117
June 30, 2014	55	30	14	8	19	126
September 30, 2014	44	38	18	6	19	125
December 31, 2014	44	17	17	12	16	106
March 31, 2015	43	24	10	13	17	107
June 30, 2015	39	21	12	5	15	92
September 18, 2015	28	20	8	5	12	73
December 23, 2015	43	14	5	7	13	82
March 31, 2016	48	15	7	6	8	84
June 30, 2016	57	13	7	3	7	87
September 30, 2016	60	31	9	5	7	112
December 22, 2016	34	30	21	6	9	100
March 31, 2017	54	15	8	15	8	100

<b>In Progress by Lab</b>	<b>0-3 Months</b>	<b>3-6 Months</b>	<b>6-9 Months</b>	<b>9-12 Months</b>	<b>Over 1 Year</b>	<b>Total</b>
California	6	2		2	1	11
Canada	3				1	4
GIPSA-IL					1	1
GIPSA-KC			1	8		9
Maryland	9	6	2	3	1	21
New York	11		3	1	1	16
NIST Force Group	2		1			3
North Carolina	5				1	6
Ohio	10	7			1	18
Oregon						
NTEP Staff	5		1	1	1	8
Unassigned	3					3

**Total Pending: 100**



	07-08	08-09	09-10	10-11	11-12	12-13	13-14	14-15	15-16	16-17
Oct – Dec	56	76	71	58	59	50	66	74	47	55
Jan – Mar	54	105	42	69	75	64	85	75	74	109
Apr – Jun	54	64	61	82	71	71	100	64	83	
Jul - Sep	63	61	56	65	75	70	60	58	90	
<b>Total</b>	<b>227</b>	<b>306</b>	<b>230</b>	<b>274</b>	<b>280</b>	<b>255</b>	<b>311</b>	<b>271</b>	<b>294</b>	<b>164</b>

**Average Per Quarter: 10-YR: 68.7**  
**Average Per Quarter This FY: 82**

THIS PAGE INTENTIONALLY LEFT BLANK