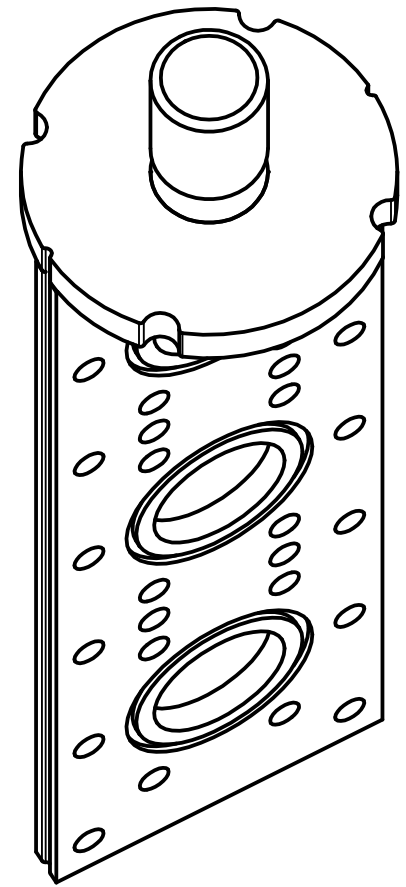
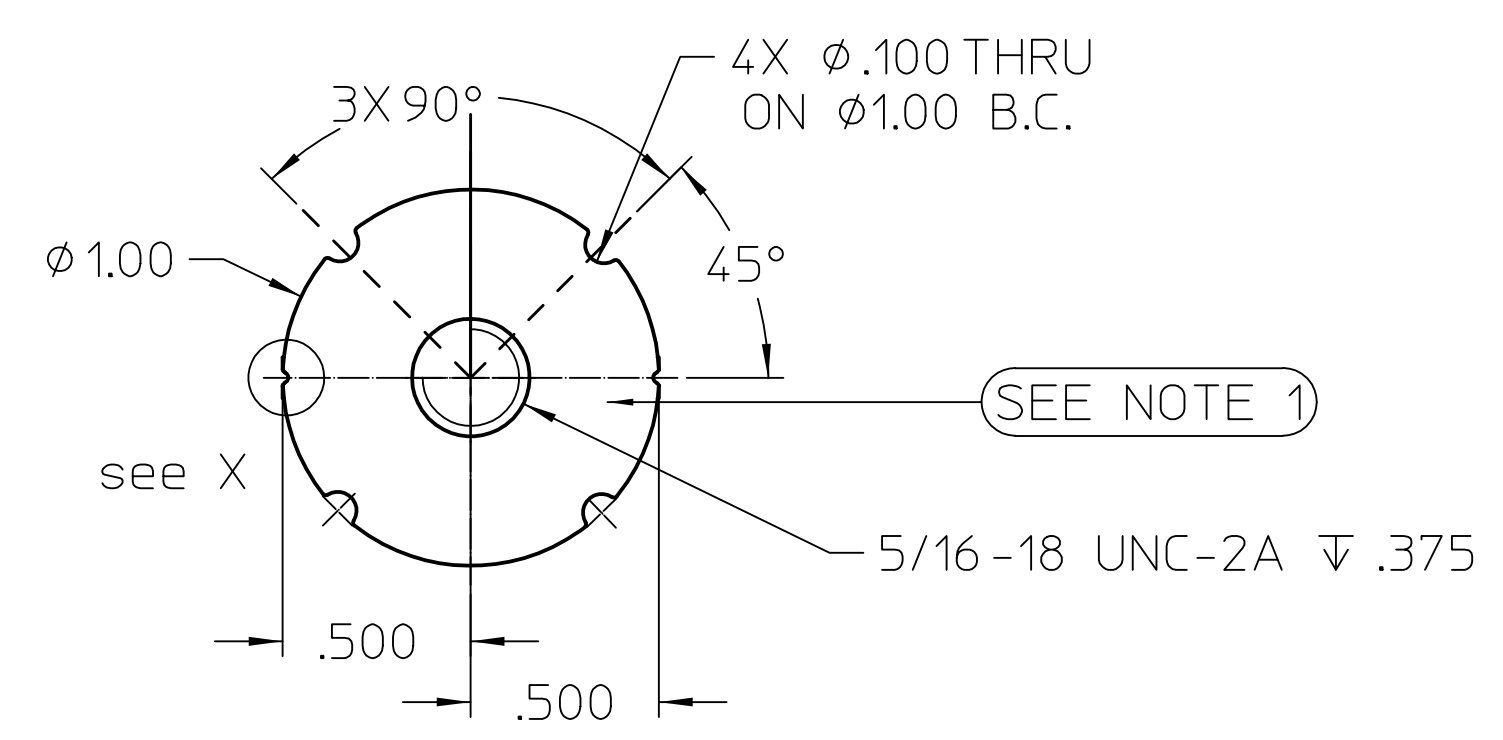
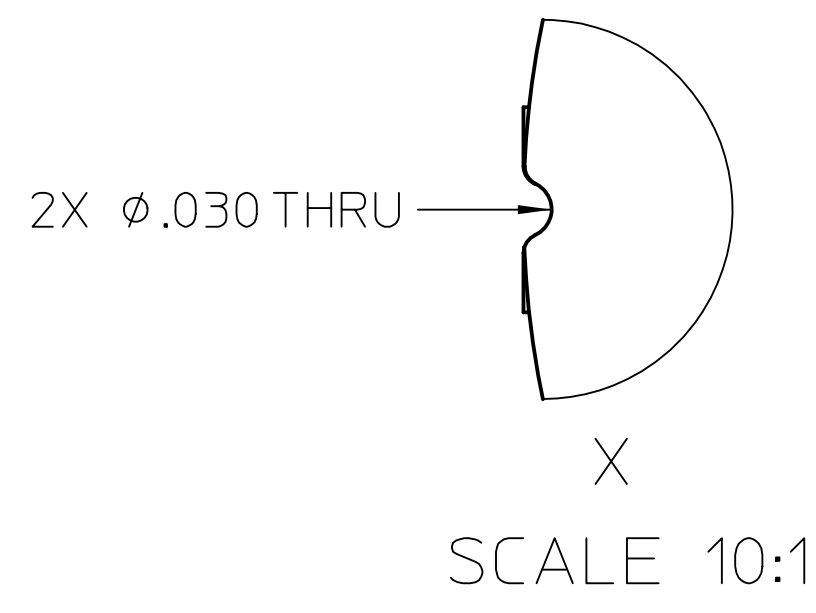


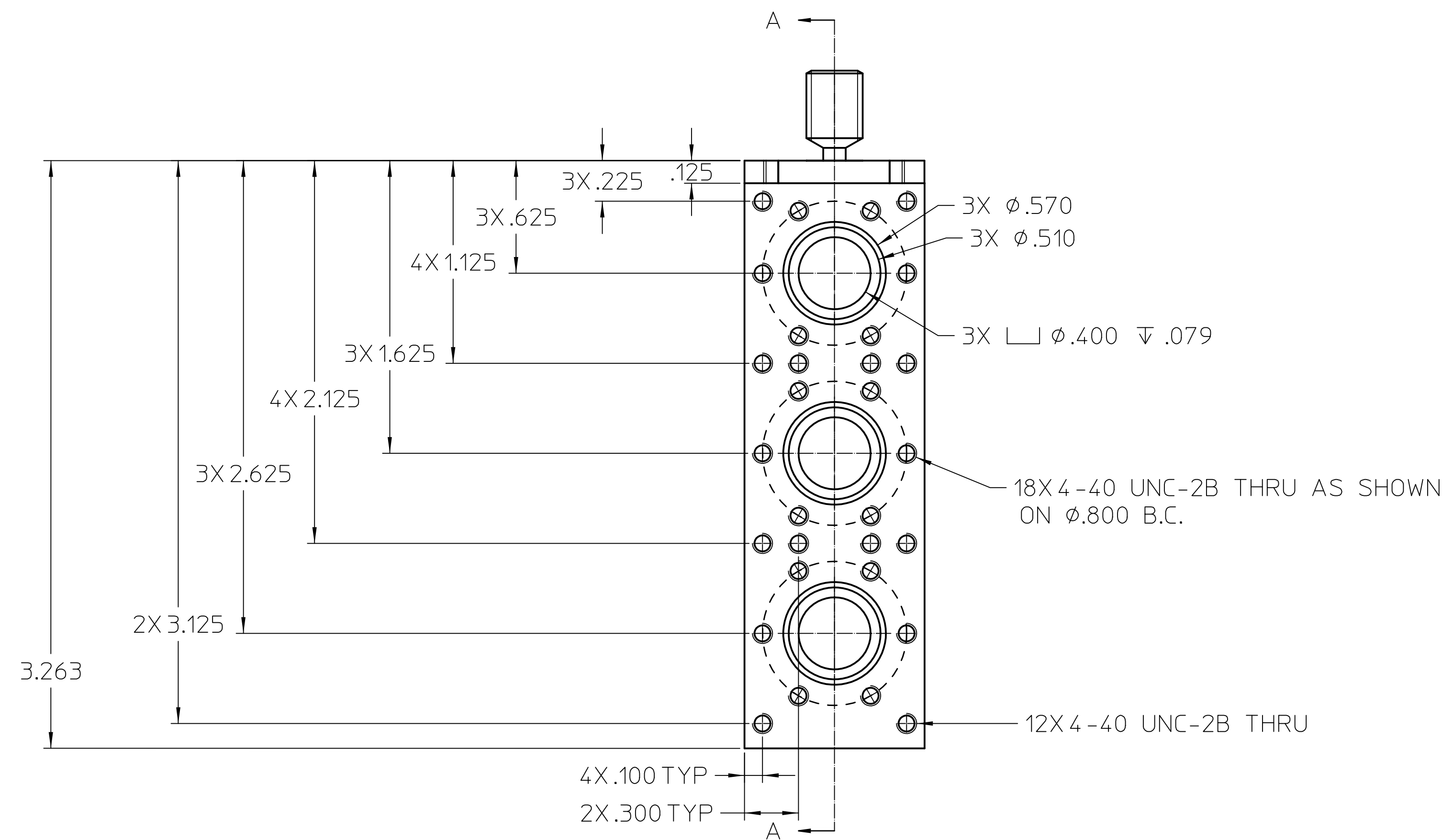
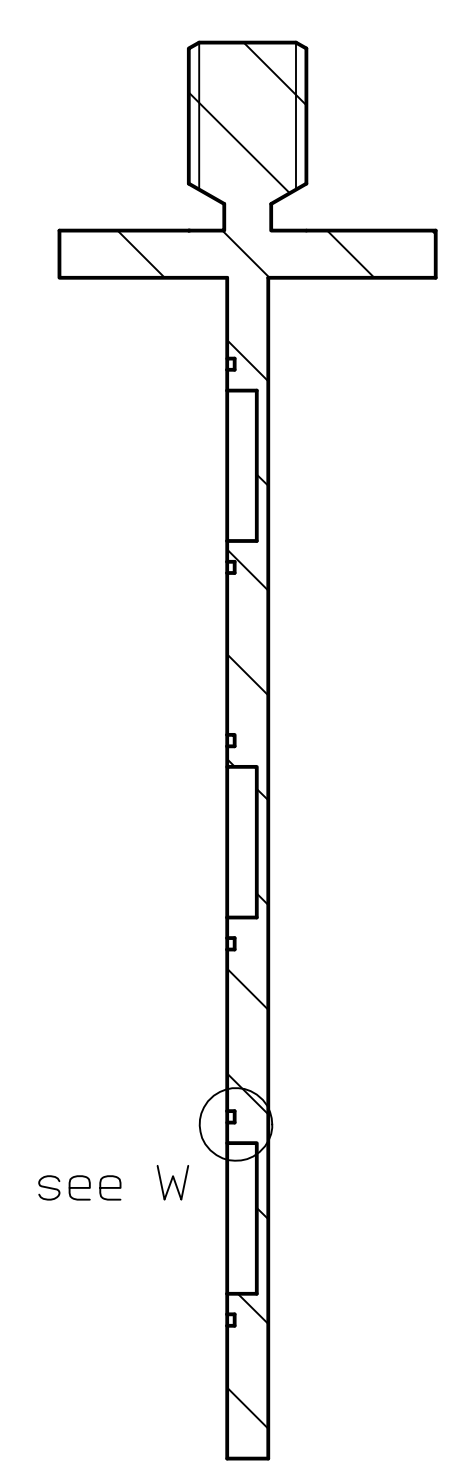
| REVISIONS | | | | |
|-----------|------|-----|--------|------|
| No. | ZONE | ECN | CHANGE | DATE |
| 1 | | | | |



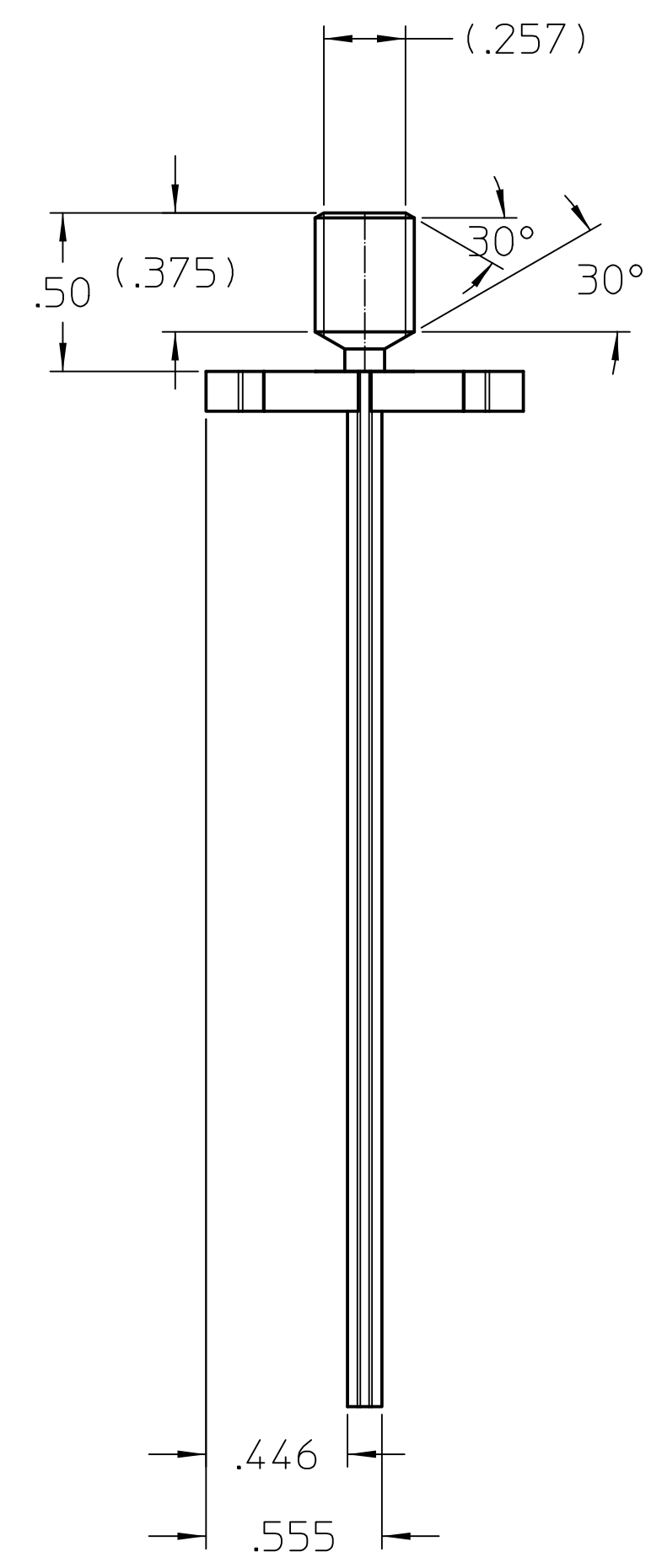
ISO1
SCALE 2:1



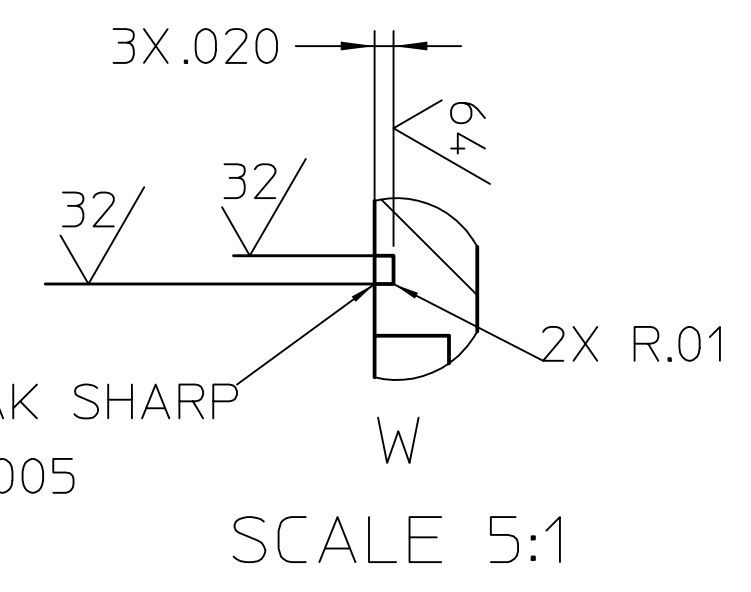
TOP1
SCALE 2:1



FRONT1
SCALE 2:1



RIGHT1
SCALE 2:1



2X BREAK SHARP EDGES .005

NOTES:
1. MARK PART WITH NO. 1/8" CHARACTER SIZE. NOT MORE THAN 24% OF PART THICKNESS.
2. BREAK ALL SHARP EDGES .005 - .015

| | | | | | | | | | |
|------------------------|------------------|-------------------------|------------------------|---|----------------------------------|--|--|-----------------------------|--|
| MATERIAL SPECIFICATION | | DRAWING APPROVALS | | UNLESS OTHERWISE SPECIFIED DIMENSIONS ARE IN INCHES | | NIST | | CENTER FOR NEUTRON RESEARCH | |
| ALUMINUM 6061-T6 | | ENGR | DATE | TOLERANCES ARE: | | National Institute of Standards and Technology | | 100 BUREAU DRIVE | |
| PER ASSEMBLY | | ENGR INVR | DATE | DECIMALS | FRACTIONS | U.S. Department of Commerce | | GATHERSBURG, MD. 20899 | |
| MODEL DATA | | DRAWING DATA | | DO NOT SCALE DRAWING | | SANS 3 SAMPLE HOLDER | | | |
| MODEL NAME | STATE | DATE | ENGINEER | FOR | | REV 1 | | | |
| SANS-3_sml_Hld | work | 12/7/15 11:19 AM | Shannon Watson | D | | DWG No. 014-2005 | | | |
| CREATOR | DATE | SHEETS | PHONE NUMBER | SCALE | | RELEASE DATE | | SHEET 1 of 1 | |
| swalson | 12/7/15 11:04 AM | 1 | (301) 975-6232 | 2:1 | | | | | |
| DRAWN | DATE | EMAIL ADDRESS | THIRD ANGLE PROJECTION | | DIM. & TOL. PER ANSI Y14.5M-1982 | | | | |
| swalson | 12/7/15 11:19 AM | shannon.watson@nist.gov | | | | | | | |