

NWIRP Strategic Plan (draft)

Recommendations for Strengthening

Thomas L. Smith, AIA, RRC, F.SEI

TLSmith Consulting Inc.

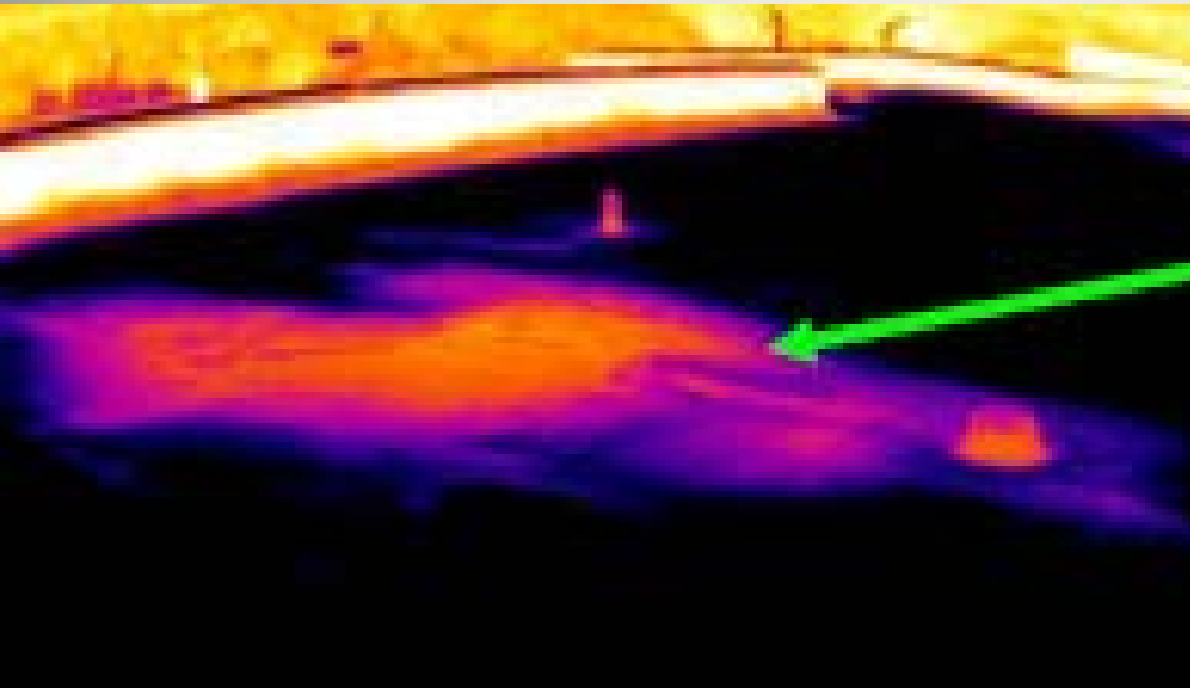
Rockton, IL

- Tools for in situ wind vulnerability assessment of new and existing buildings
- Construction workforce development

In Situ Wind Vulnerability Assessment

- New buildings: Does installed system have specified resistance (wind & wind-driven rain)
- Existing buildings: Do existing systems have adequate resistance

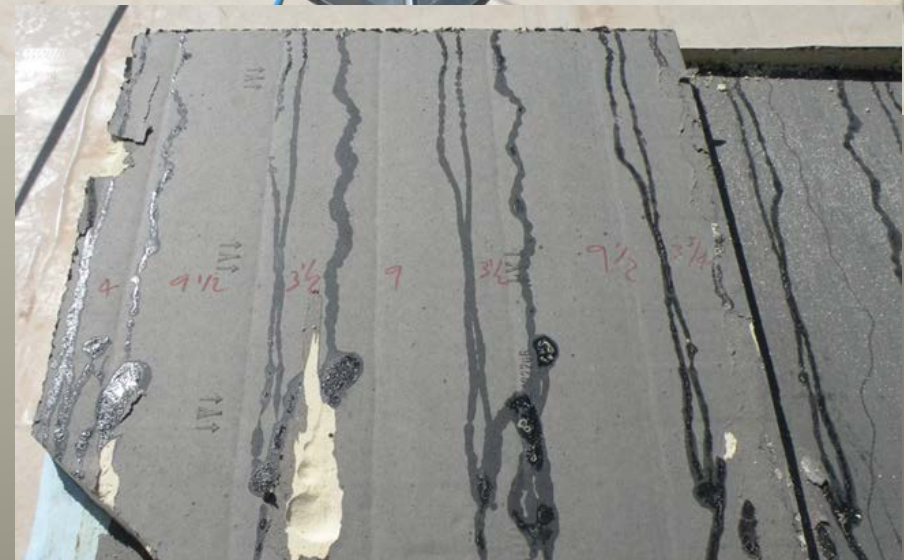
Current Assessment Tools



Excessive
moisture
detection



Current Assessment Tools



Uplift testing

Current Assessment Tools

Water testing with interior pressure chamber & EIFS pull test



Assessment Tool Needs

Attachment of edge flashings, copings, gutters & nailers



Assessment Tool Needs

Field uplift test apparatus for other types of systems



Construction Workforce Development

- SP-7 (page 43) does not include construction trades.
 - Workmanship deficiencies are the primary cause of many wind failures. This issue should be included in SP-7
 - Construction robotics should also be addressed in SP-7 or elsewhere