

## Appendix A NTEP Statistics Report

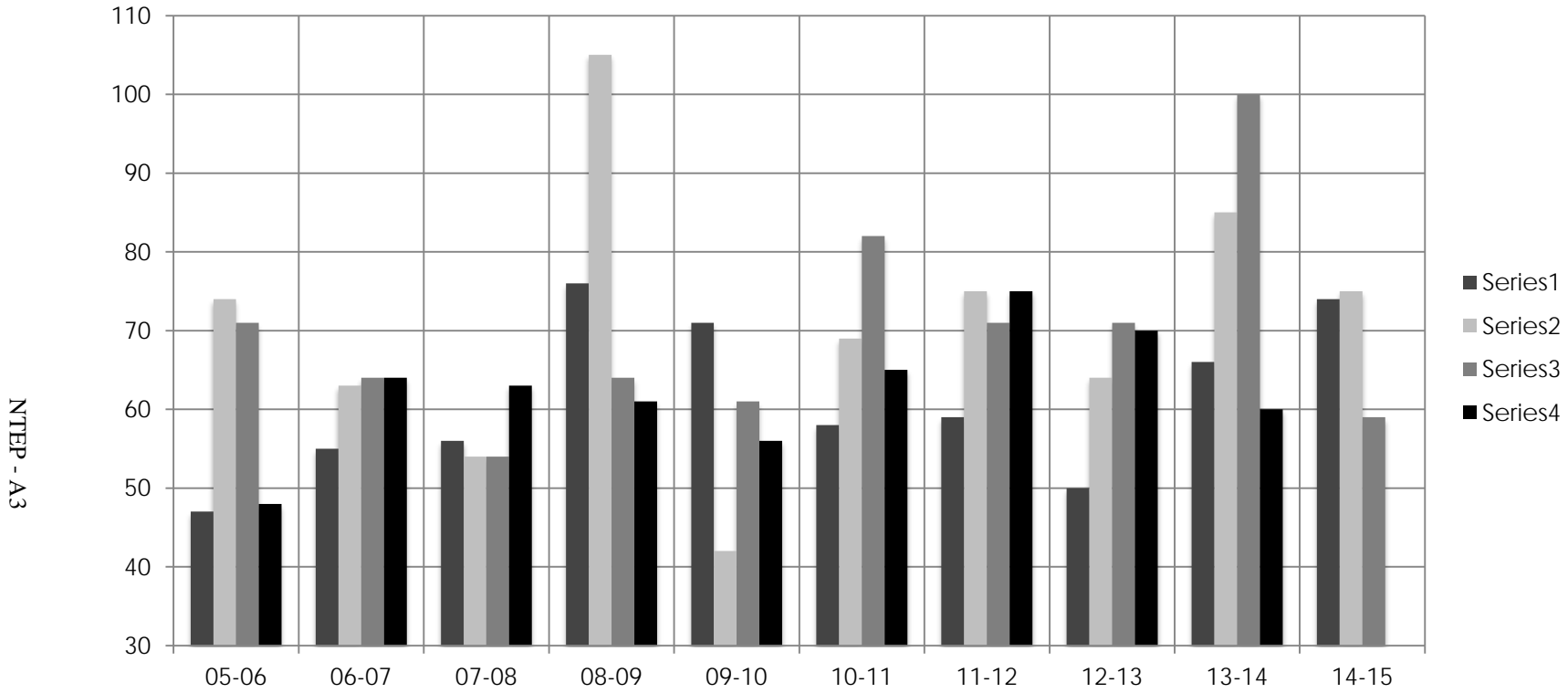
<b>General NTEP Statistics</b>	<b>Last Year</b>	<b>This Year to Date</b>
	<b>10/01/13 – 9/30/14</b>	<b>10/01/14 – 6/30/15</b>
Total Applications Processed	(34) 311	(36) 208
Applications Completed	289	231
New Certificates Issued	268	208
Active NTEP Certificates		1951
		( ) = Reactivations
<b>Assignments to Labs per Year</b>	<b>10/1/13 – 9/30/14</b>	<b>10/1/14 – 6/30/15</b>
California	39	14
Canada	(1) 5	3
GIPSA-DC	0	0
GIPSA-KC	8	6
Maryland	(3) 42	(9) 42
New York	9	(5) 8
NIST Force Group	4	3
North Carolina	(1) 26	11
Ohio	56	35
Oregon	0	(1) 1
NTEP Field	2	4
NTEP Administrator	(1) 123	86
Applications Not Yet Assigned to a Lab		0
		( ) = Reassignments from another lab
<b>Process Statistics</b>	<b>10/2008 - Present</b>	<b>10/2000 – 9/2008</b>
Average Time to Assign an Evaluation	4.7 Days	11.8 Days
Average Time to Complete an Evaluation	87.2	169.7 Days

### Report on Evaluations in Progress

<b>Evaluations in Progress</b>	<b>0-3 Months</b>	<b>3-6 Months</b>	<b>6-9 Months</b>	<b>9-12 Months</b>	<b>Over 1 Year</b>	<b>Total</b>
September 30, 2011	42	28	11	5	19	105
December 31, 2011	37	19	23	5	17	101
March 31, 2012	40	17	7	21	14	99
June 30, 2012	41	21	10	6	20	98
September 30, 2012	50	30	15	7	19	121
December 31, 2012	32	24	17	7	18	98
March 31, 2012	36	12	14	12	18	92
June 30, 2013	53	18	6	6	19	102
September 30, 2013	44	32	5	4	21	106
December 31, 2013	41	25	24	2	24	116
March 31, 2014	53	23	13	17	11	117
June 30, 2014	55	30	14	8	19	126
September 30, 2014	44	38	18	6	19	125
December 31, 2014	44	17	17	12	16	106
March 31, 2015	43	24	10	13	17	107
<b>June 30, 2015</b>	<b>39</b>	<b>21</b>	<b>12</b>	<b>5</b>	<b>15</b>	<b>92</b>

<b>In Progress by Lab</b>	<b>0-3 Months</b>	<b>3-6 Months</b>	<b>6-9 Months</b>	<b>9-12 Months</b>	<b>Over 1 Year</b>	<b>Total</b>
California	2	4	3	2	1	12
Canada	2	1	0	1	0	4
GIPSA-DC	0	0	0	0	0	0
GIPSA-KC	4	2	0	0	2	8
Maryland	11	5	6	0	4	26
New York	1	0	1	0	0	2
NIST Force Group	0	0	0	0	4	4
North Carolina	6	2	1	1	1	11
Ohio	9	5	1	1	2	18
Oregon	0	0	0	0	1	1
NTEP Staff	4	2	0	0	0	6
Unassigned	0	0	0	0	0	0
					<b>Total Pending:</b>	<u><u>92</u></u>

### 10-Year Report on Applications Received by Quarter



	<b>05-06</b>	<b>06-07</b>	<b>07-08</b>	<b>08-09</b>	<b>09-10</b>	<b>10-11</b>	<b>11-12</b>	<b>12-13</b>	<b>13-14</b>	<b>14-15</b>
Oct – Dec	47	55	56	76	71	58	59	50	66	74
Jan – Mar	74	63	54	105	42	69	75	64	85	75
Apr – Jun	71	64	54	64	61	82	71	71	100	59
Jul - Sep	48	64	63	61	56	65	75	70	60	
<b>Total</b>	<b>240</b>	<b>246</b>	<b>227</b>	<b>306</b>	<b>230</b>	<b>274</b>	<b>280</b>	<b>255</b>	<b>311</b>	<b>208</b>

**Average Per Quarter: 10-YR: 66.1**

**Average Per Quarter This FY: 69.3**

THIS PAGE INTENTIONALLY LEFT BLANK