

COGENT  **SYSTEMS**



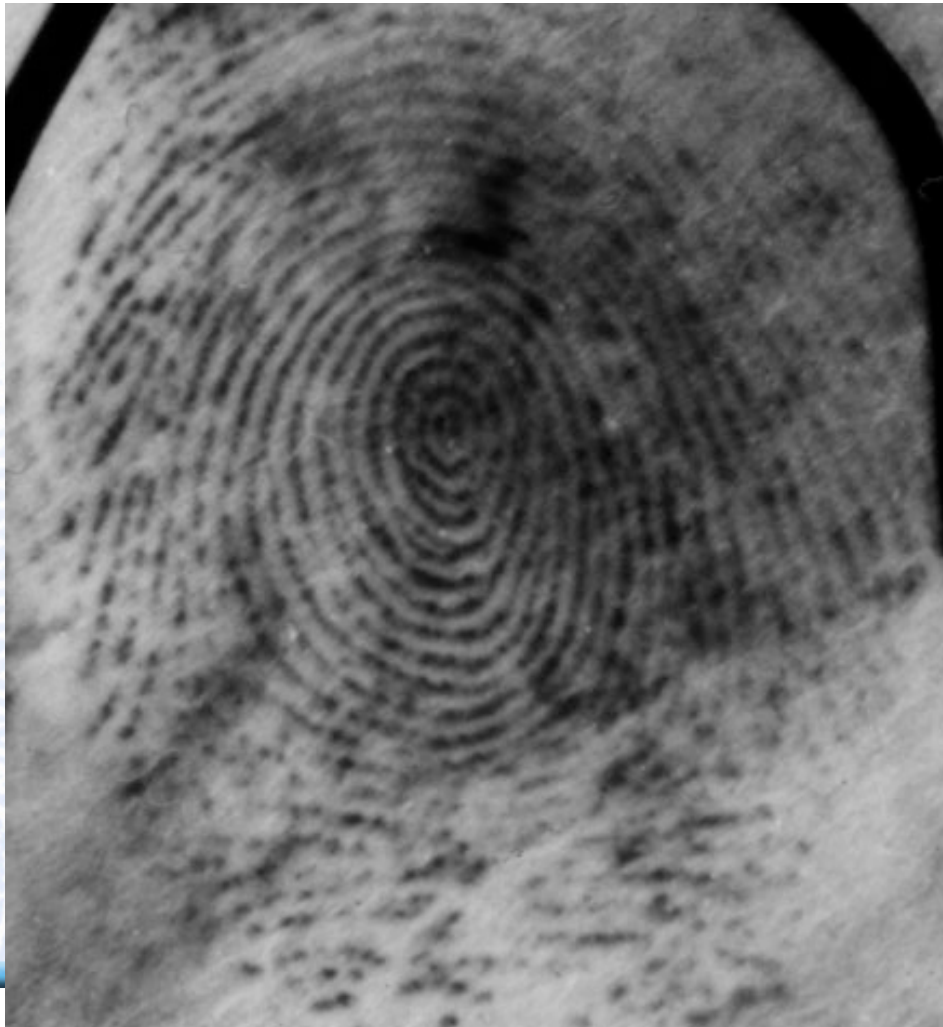
NIST Latent Fingerprint Workshop

Tom Hopper
thopper@cogentsystems.com

1a Image-only Latent Matching



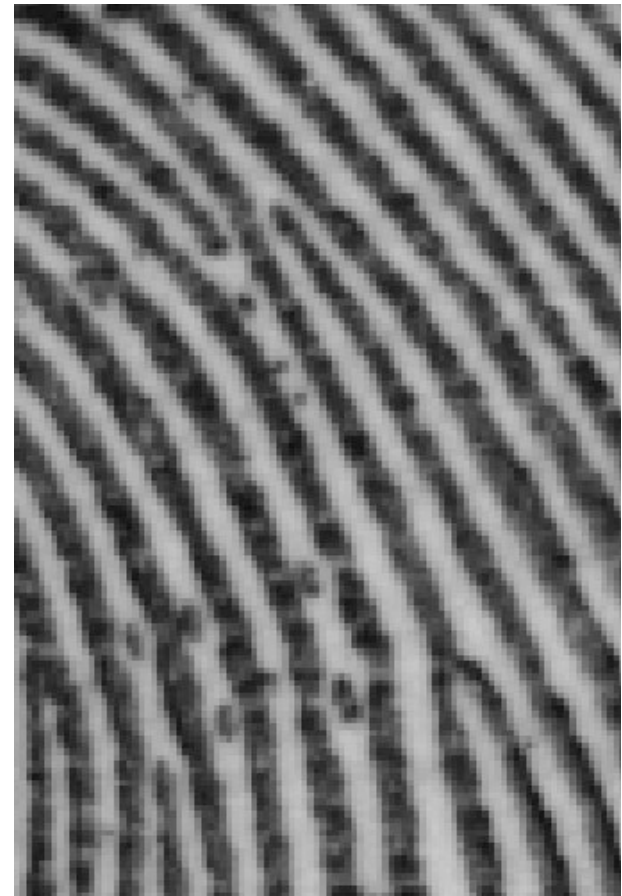
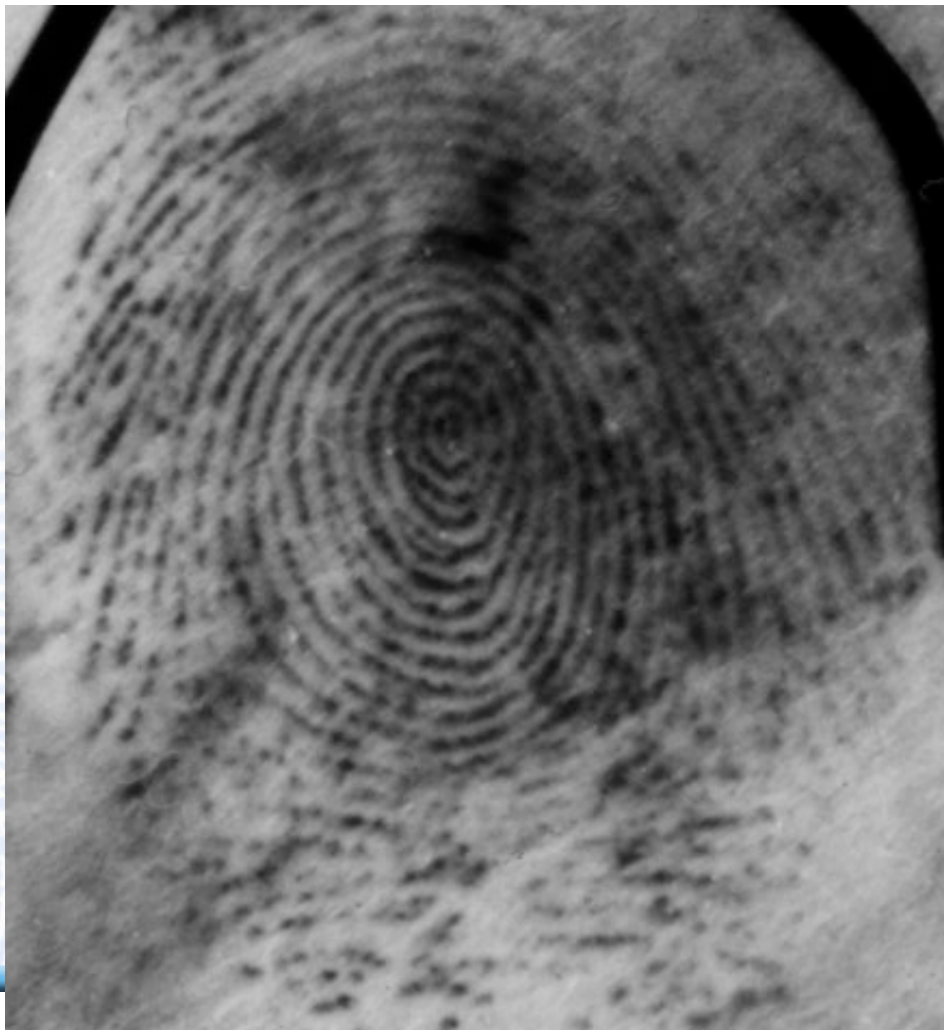
- Examiner and computer have complimentary capabilities



1a Image-only Latent Matching



- Examiner and computer have complimentary capabilities



1a Image-only Latent Matching



COGENT  SYSTEMS

- Search should always include image
 - Storage and bandwidth are less of a concern
- Examiner selects range of features for inclusion
 - Image quality
 - Case characteristics

2a CDEFFS Specification

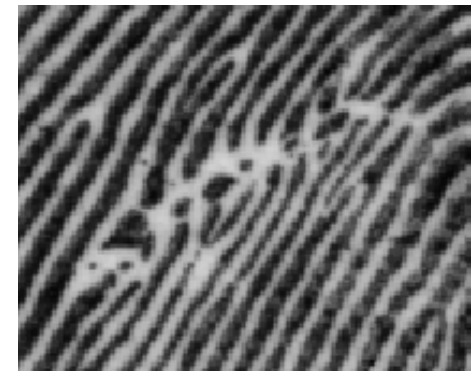


COGENT  SYSTEMS

Searching Cogent CAFIS:

- ANSI/NIST/EBTS search with image plus one of:
 - IAFIS feature set
 - EFFS minutiae (9.331) + distinctive area (9.324) + ...
- Return candidates in EBTS/SRL format

- Distinctive Area (9.324)
 - Discriminating/unique Detail
 - Third Level Detail
 - Texture Matching



2c How to Test EFFS



To get a return on investment (viable interoperability)

Provide actionable feedback (test images) to participants

