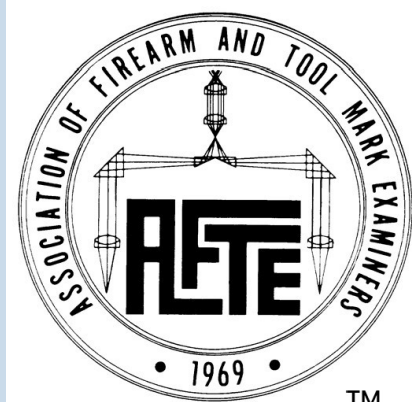


Introduction: Individual Characteristic Database

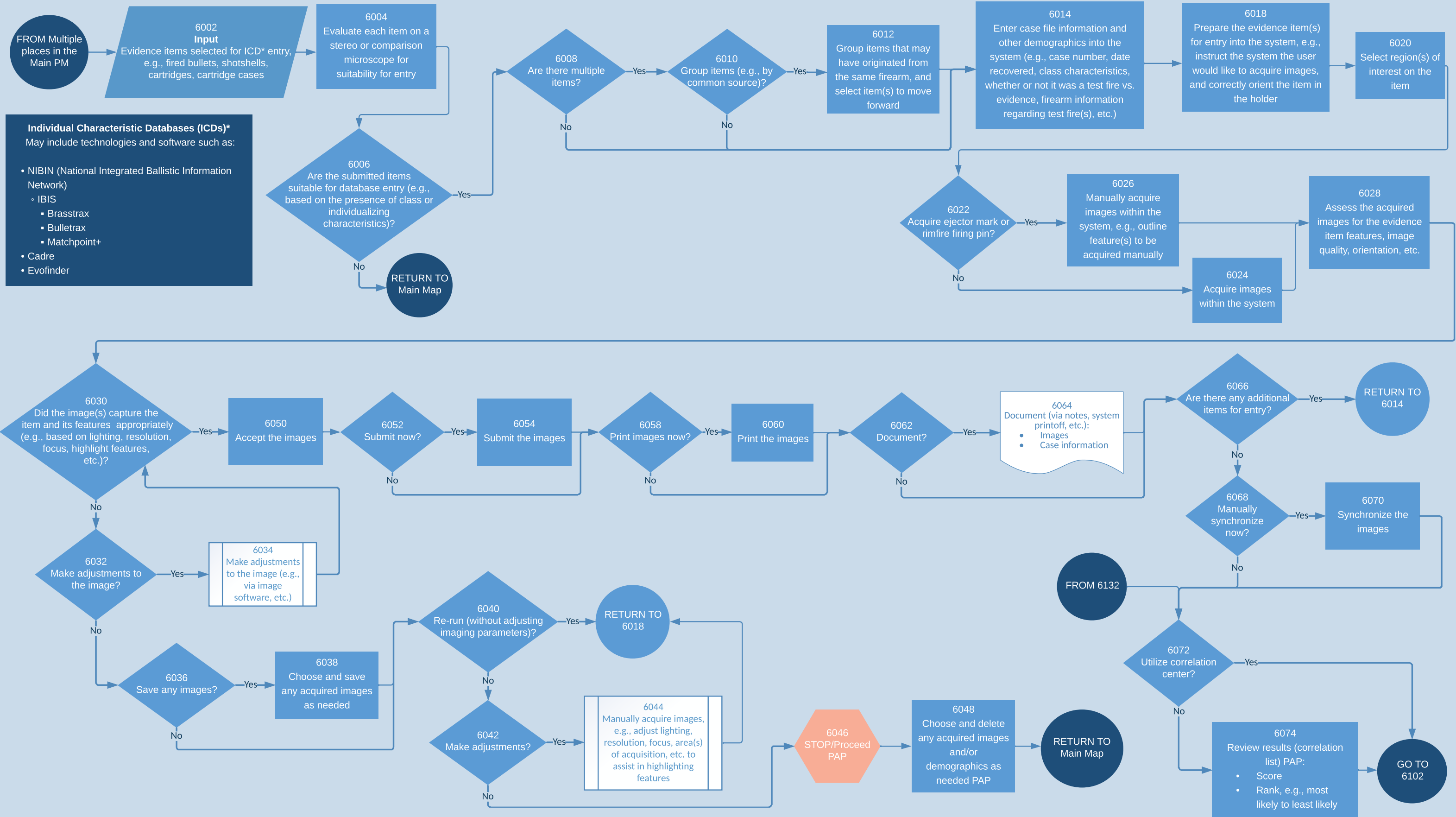
The National Institute of Standards and Technology (NIST) facilitated the development of the initial Firearms Process Map ([which can be accessed via NIST and OSAC process mapping websites](#)) through a collaboration between the NIST Forensic Science Research Program and the NIST administered Organization of Scientific Area Committees (OSAC) for Forensic Sciences (specifically OSAC's Firearms and Toolmarks Subcommittee) in partnership with the Association of Firearm and Tool Mark Examiners (AFTE).

The scope of the initial Firearms Process map was limited to core processes within the discipline of firearm and toolmark examination such as the examination of firearms and the microscopic comparison of fired ammunition components. Several topics were omitted from the map including individual characteristic databases, toolmark examination, fracture matching and distance determination.

Some of these topics, however, such as this Individual Characteristic Database (ICD) process map were subsequently addressed by the process mapping team through additional efforts sponsored by AFTE, and are published and referenced on the NIST process mapping Website. .



6000 - Individual Characteristic Database (ICD) Page 1



This process map provides a visual description and attempts to represent all reasonable variations of casework currently performed by firearm examiners. NIST and AFTE do not necessarily support or endorse (as best practices) all of the different steps and paths depicted in this process map.

6100 - Individual Characteristic Database (ICD) Page 2

