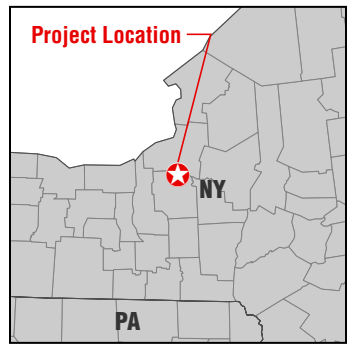


Area of Potential Effects

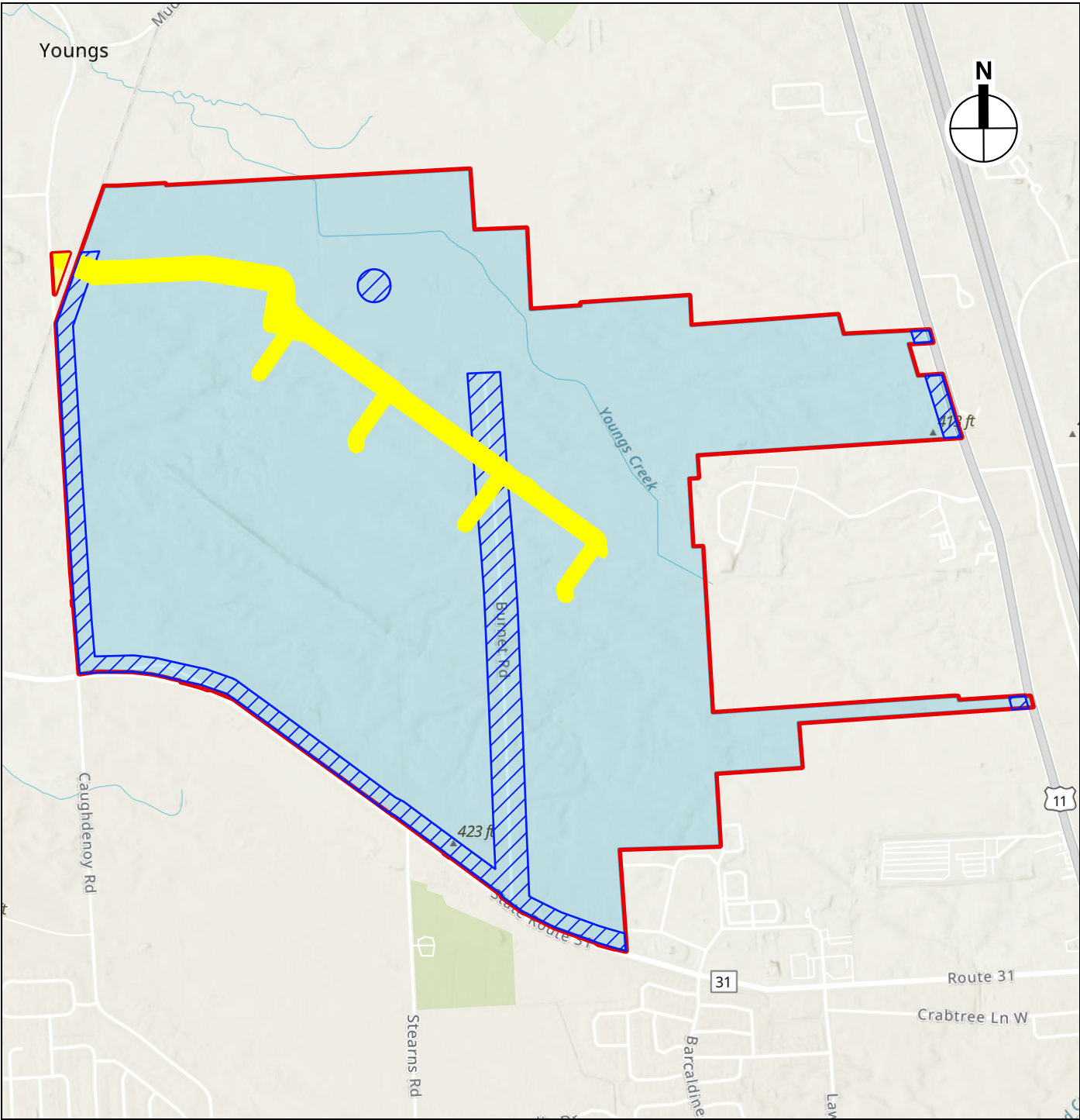
Approximate coordinates of Project Site:  
76°9'20"W 43°11'52"N







Micron Main Campus, Rail Spur Site, and Childcare Site APE

Figure 1

2.22.25  
Data source: Esri, NASA, NGA, USGS, FEMA, TomTom, Garmin, SafeGraph, GeoTechnologies, Inc, METI/NASA, USGS, EPA, NPS, US Census Bureau, USDA, USFWS

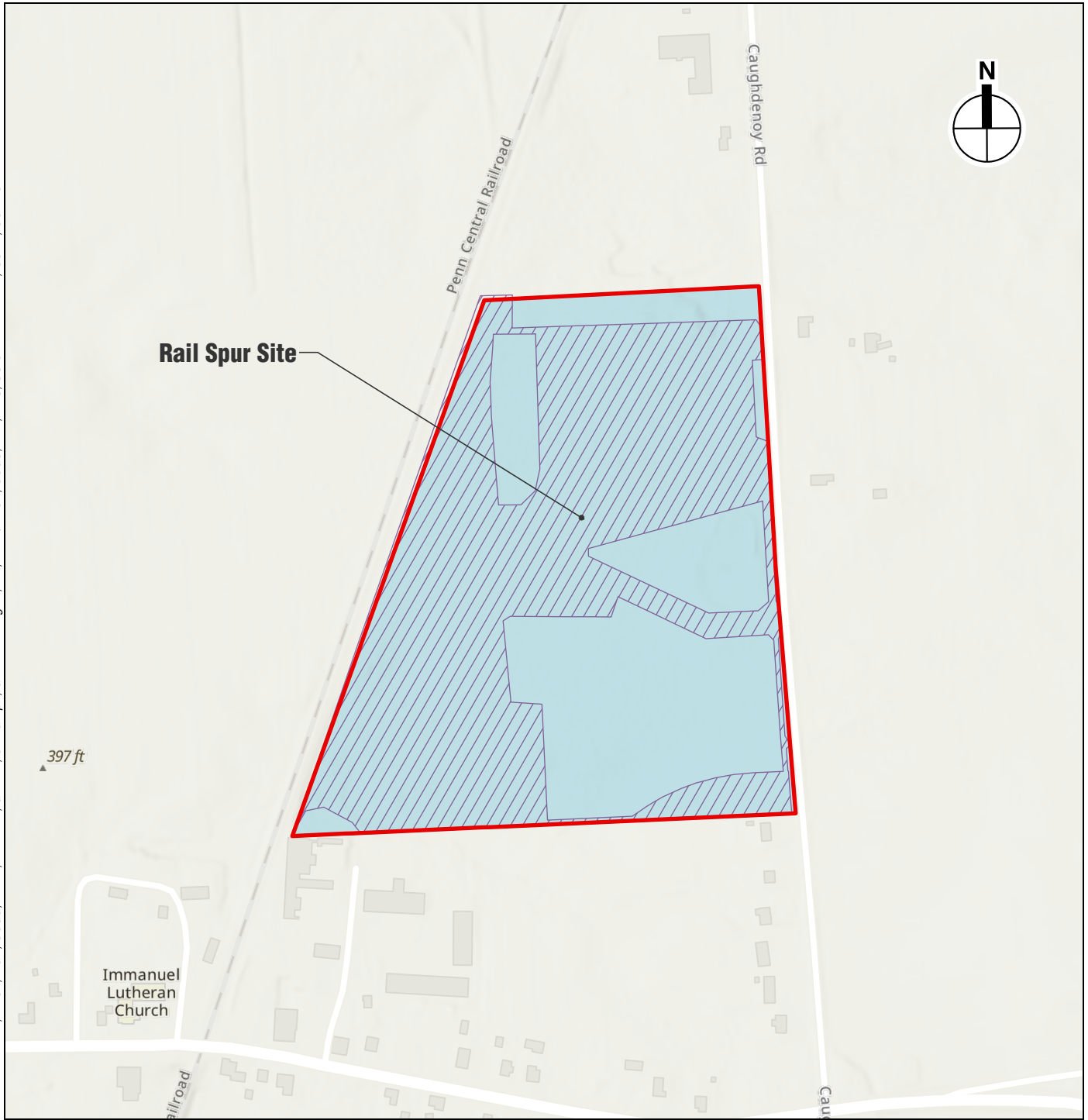


-  Area of Potential Effects
-  Areas of Precontact Archaeological Sensitivity in Undisturbed Areas
-  Areas of Historic Period Archaeological Sensitivity
-  Not sensitive based on results of recent testing

0 2,000 FEET



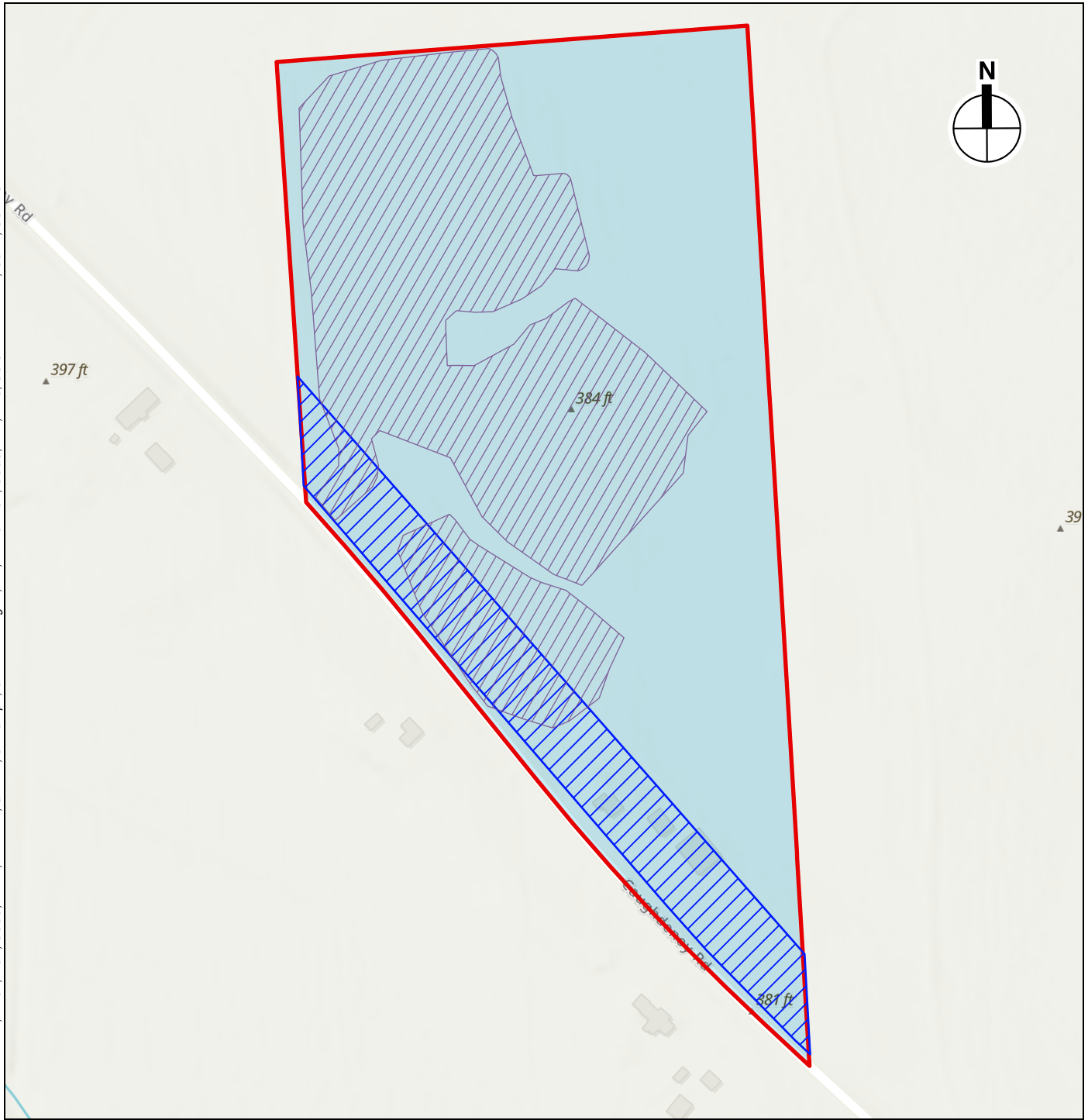
Main Campus APE  
Figure 1A







-  Rail Spur Site
-  Areas of Precontact Archaeological Sensitivity in Undisturbed Areas
-  Limits of Disturbance



2.24.25  
Data source: Esri, NASA, NGA, USGS, FEMA, USGS, TomTom, Garmin, SafeGraph, GeoTechnologies, Inc, METI/NASA, USGS, EPA, NPS, US Census Bureau, USDA, USFWS



-  Childcare Site
-  Areas of Precontact Archaeological Sensitivity in Undisturbed Areas
-  Areas of Historic Period Archaeological Sensitivity
-  Limits of Disturbance

0 400 FEET



Childcare Site APE  
Figure 1C

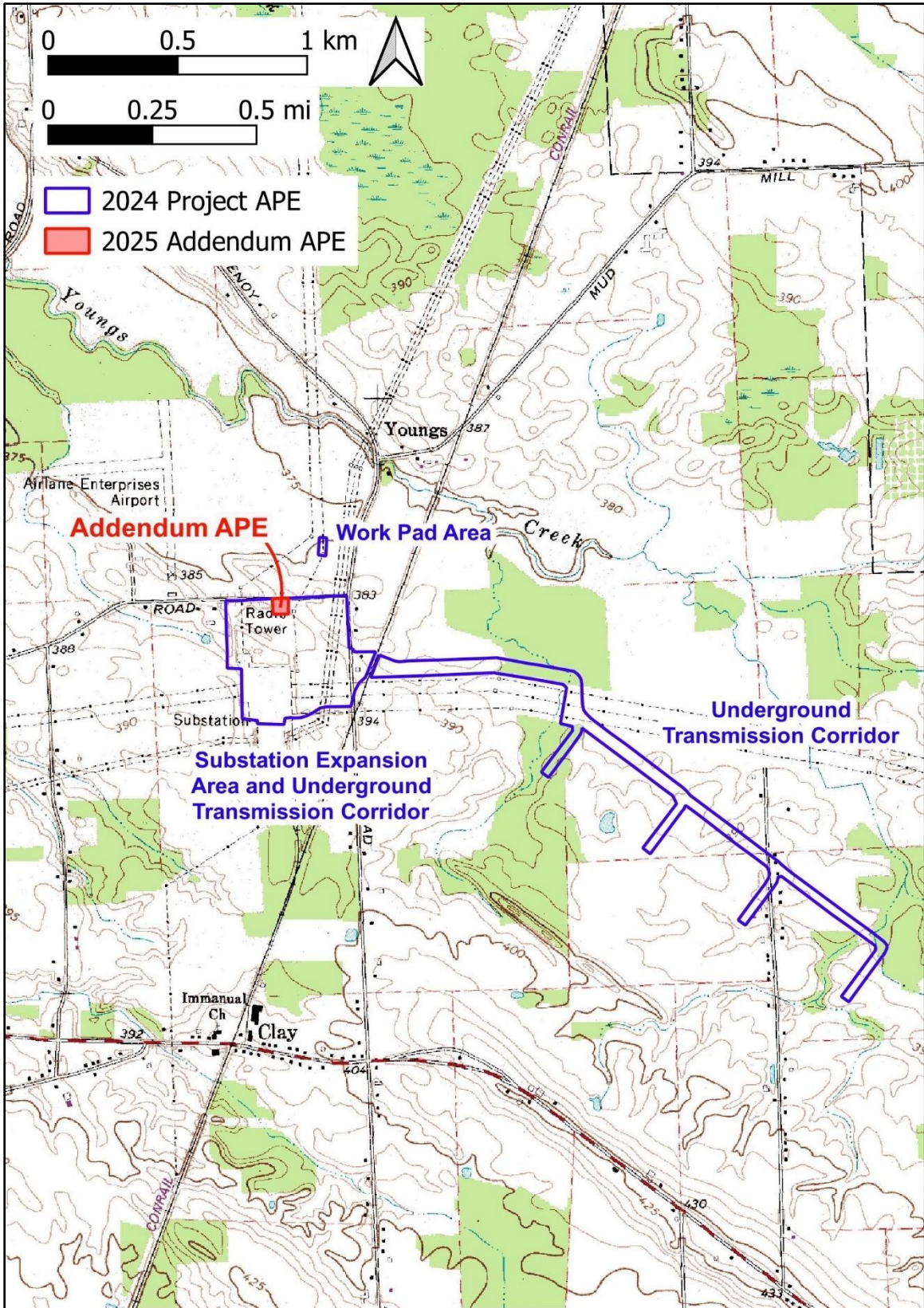
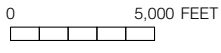
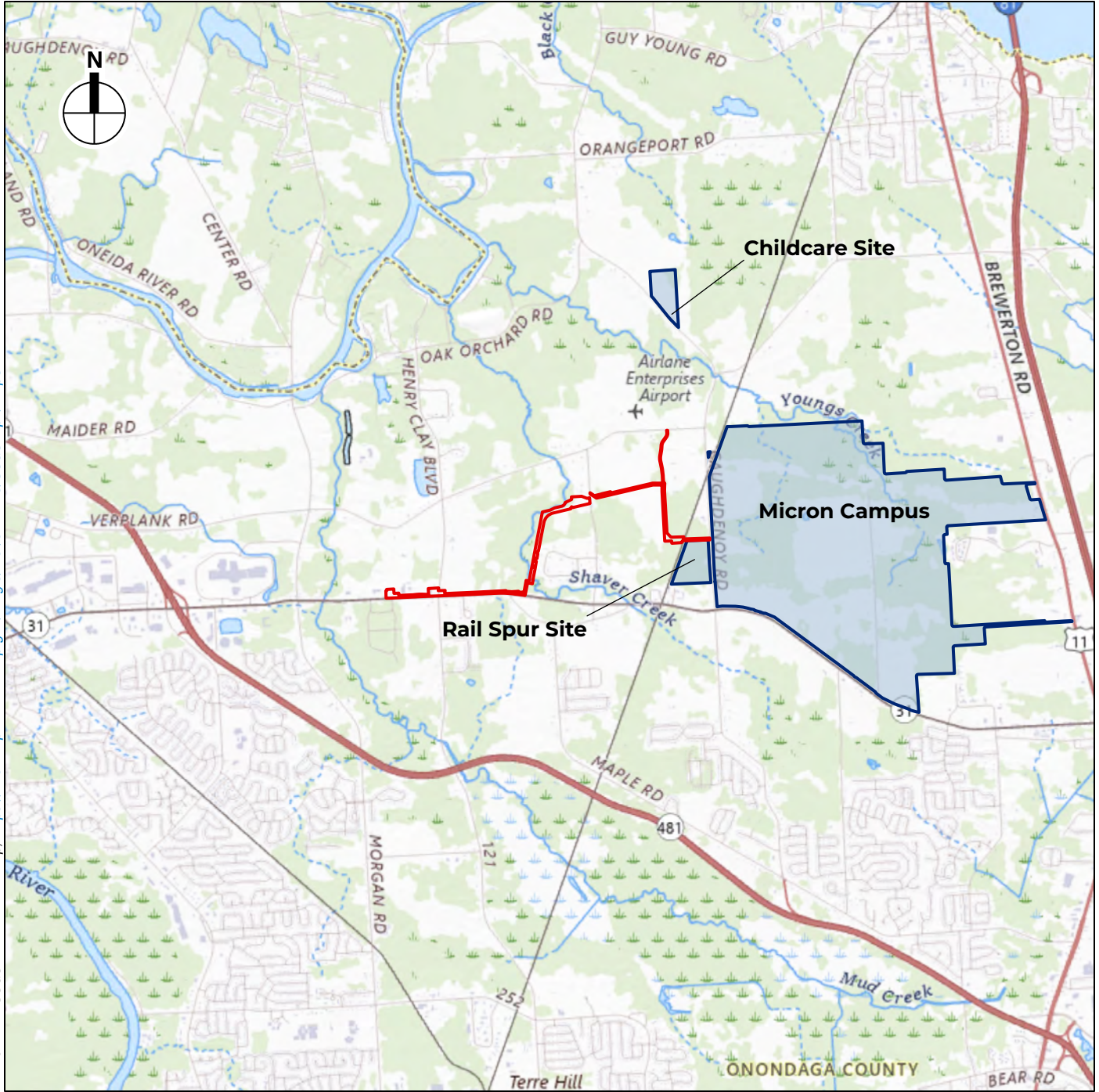




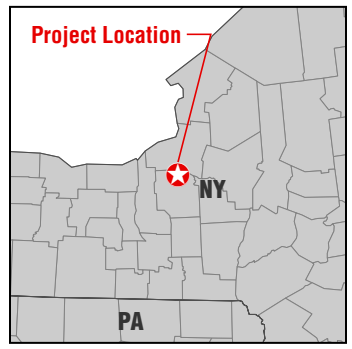
Figure 2. Location of the addendum APE on the 1973 Brewerton, NY 7.5' USGS quadrangle.

2.20.25  
Data source: USGS The National Map. <https://basemap.nationalmap.gov/app/ui/index.html>



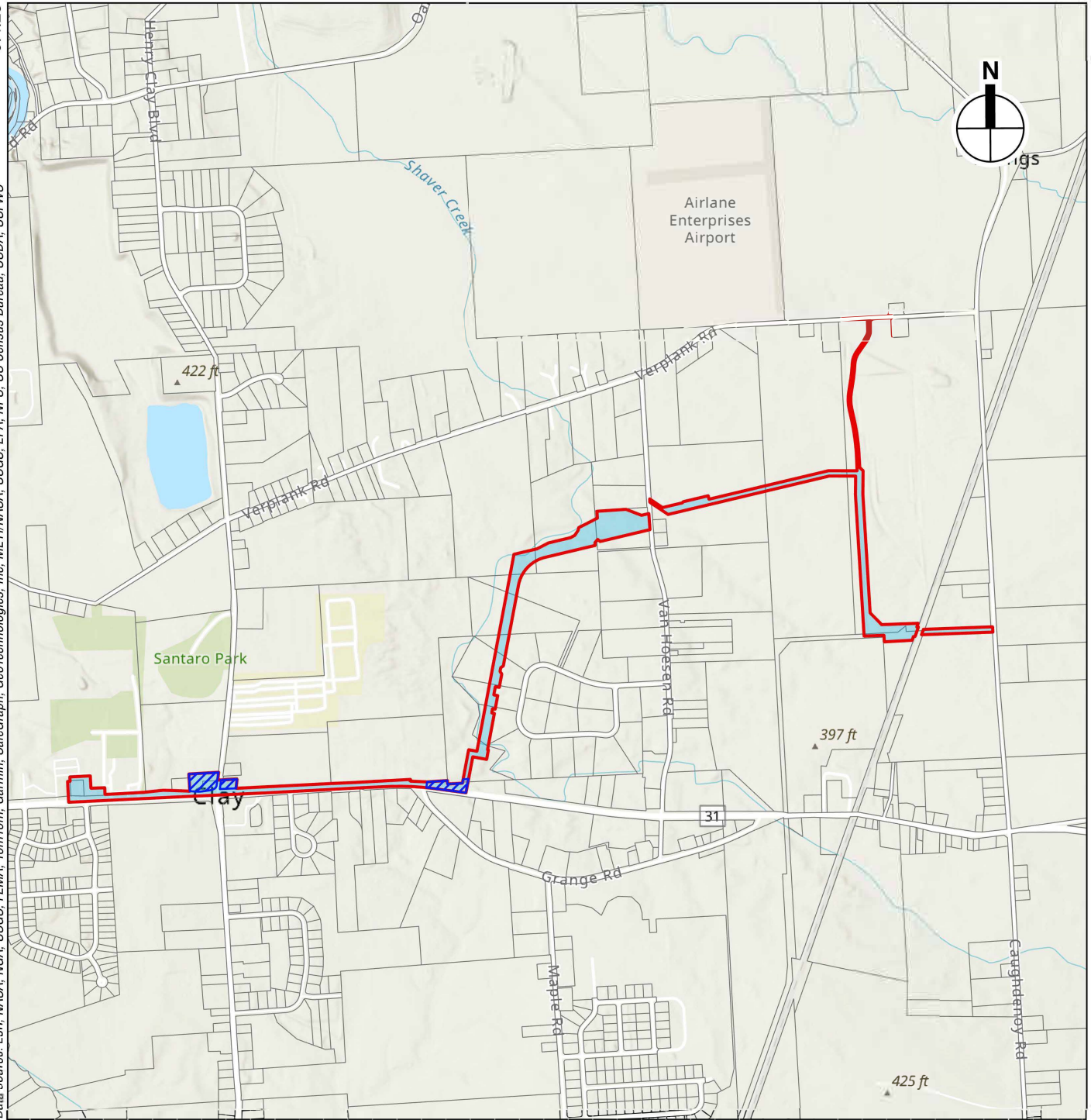
-  Natural Gas Line APE
-  Proposed Project
  - Micron Campus
  - Childcare Site
  - Rail Spur Site

Approximate coordinates of Project Site:  
76°11'11"W 43°11'28"N



Natural Gas Line APE  
Figure 3

3.4.25  
Data source: Esri, NASA, NGA, USGS, FEMA, USGS, TomTom, Garmin, SafeGraph, GeoTechnologies, Inc, METI/MASA, USGS, EPA, NPS, US Census Bureau, USDA, USFWS

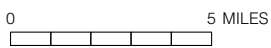


-  Natural Gas Line APE
-  Areas of Precontact Archaeological Sensitivity in Undisturbed Areas
-  Areas of Historic Period Archaeological Sensitivity

0 2,000 FEET

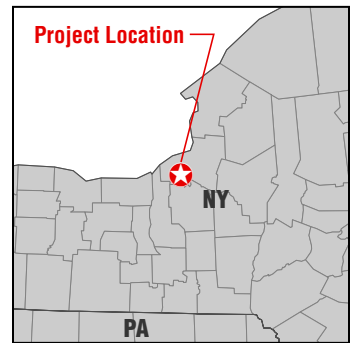


Natural Gas Line APE  
Figure 3A

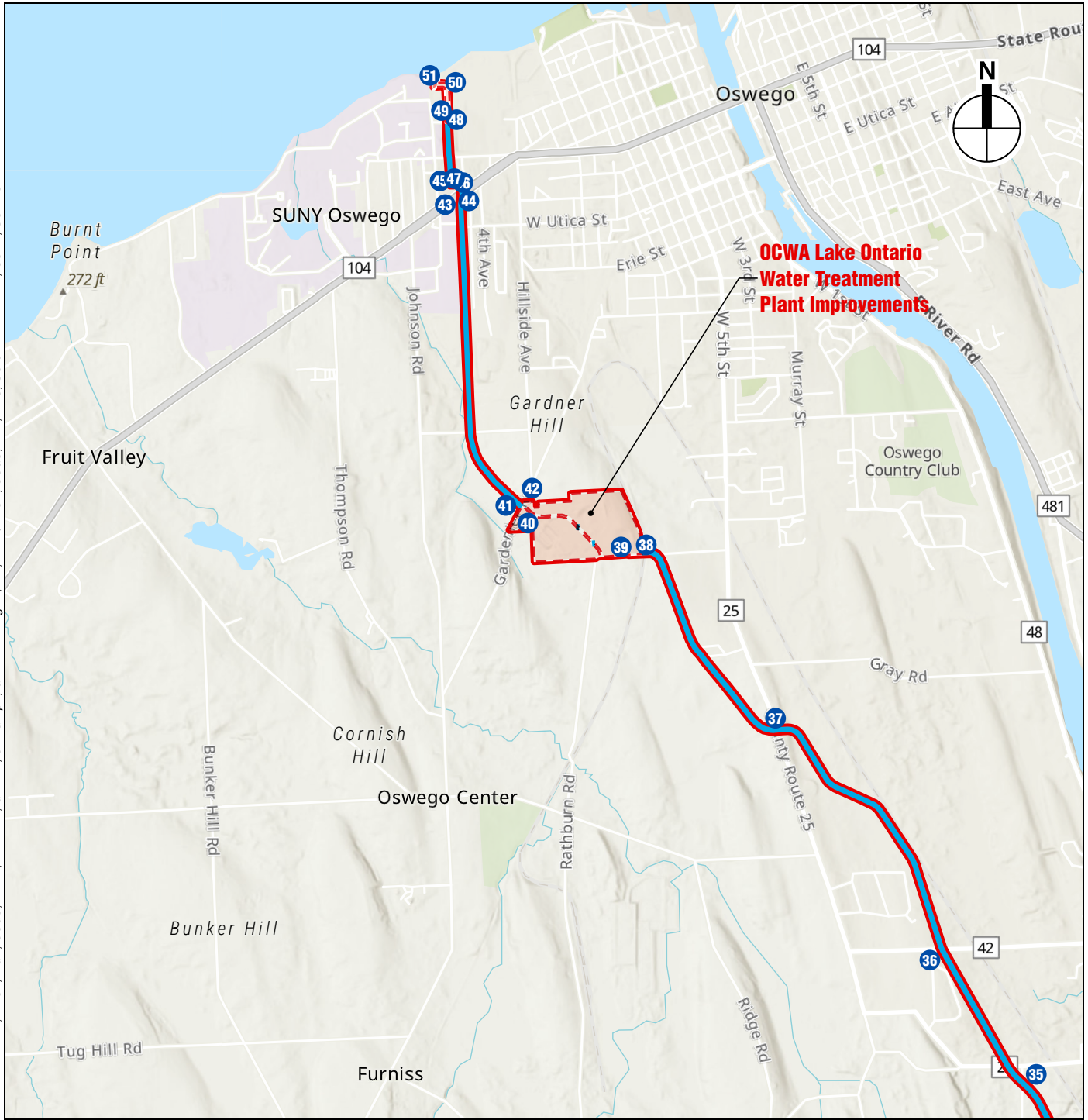


- Water Supply APE
- Proposed Project
  - Micron Campus
  - Childcare Site
  - Rail Spur Site

NOTE: APE is located on the Brewerton, Baldwinsville, Fulton, and Hannibal quadrangles



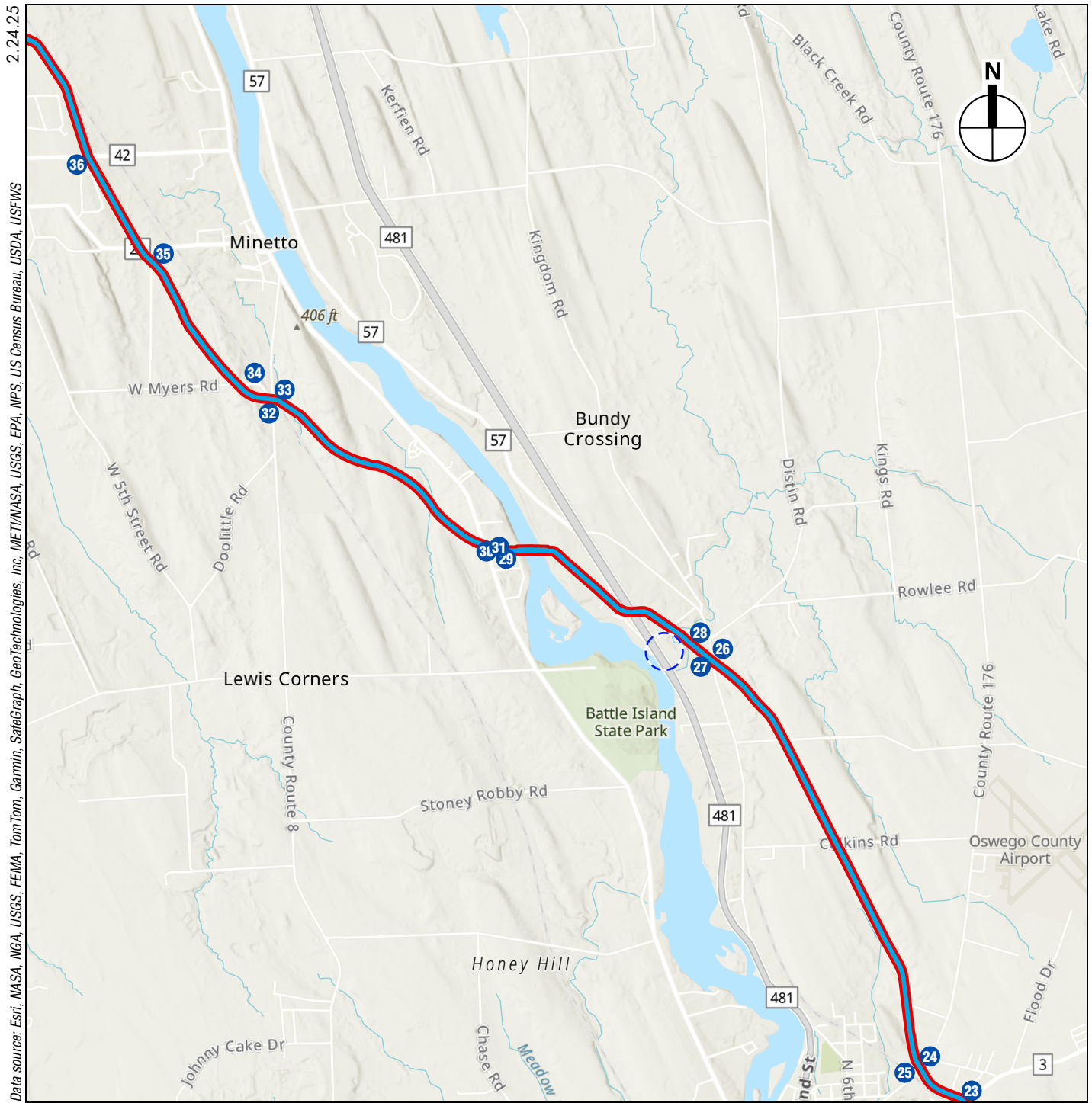




- Water Supply APE
- Disturbed Area
- Sensitive for Precontact Archaeological Resources in Undisturbed Areas
- 1 Approximate Location of Map-Documented Structure (See Table 6-1)



OCWA Water Supply APE  
 Figure 4A

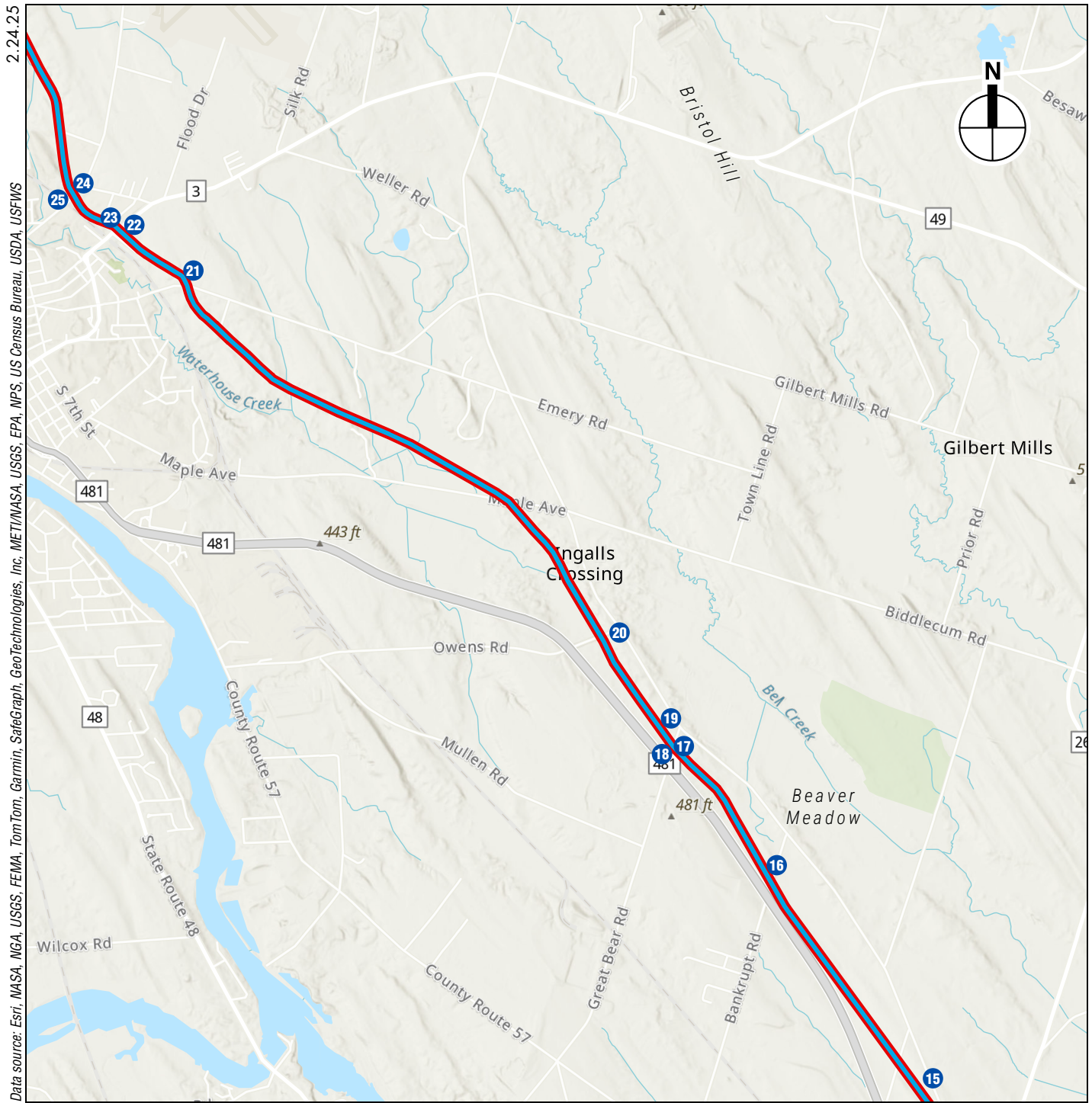


Data source: Esri, NASA, NGA, USGS, FEMA, TomTom, Garmin, SafeGraph, GeoTechnologies, Inc, METI/MASA, USGS, EPA, NPS, US Census Bureau, USDA, USFWS

|                                                                                                                                                                                                                                                                                                                                                                                                                                                                                                                     |                                                                                                                                                                       |                                                                                                                           |
|---------------------------------------------------------------------------------------------------------------------------------------------------------------------------------------------------------------------------------------------------------------------------------------------------------------------------------------------------------------------------------------------------------------------------------------------------------------------------------------------------------------------|-----------------------------------------------------------------------------------------------------------------------------------------------------------------------|---------------------------------------------------------------------------------------------------------------------------|
| <p><span style="border: 2px solid red; display: inline-block; width: 20px; height: 10px; margin-right: 5px;"></span> Water Supply APE</p> <p><span style="border-bottom: 2px solid blue; display: inline-block; width: 20px; margin-right: 5px;"></span> Sensitive for Precontact Archaeological Resources in Undisturbed Areas</p> <p><span style="border: 1px solid blue; border-radius: 50%; padding: 2px 5px; margin-right: 5px;">1</span> Approximate Location of Map-Documented Structure (See Table 6-1)</p> | <p><span style="border: 1px dashed blue; display: inline-block; width: 20px; height: 10px; margin-right: 5px;"></span> Approximate Location of Van Buren Cemetery</p> | <p>0 <span style="display: inline-block; width: 100px; border-bottom: 1px solid black; margin: 0 5px;"></span> 1 Mile</p> |
|---------------------------------------------------------------------------------------------------------------------------------------------------------------------------------------------------------------------------------------------------------------------------------------------------------------------------------------------------------------------------------------------------------------------------------------------------------------------------------------------------------------------|-----------------------------------------------------------------------------------------------------------------------------------------------------------------------|---------------------------------------------------------------------------------------------------------------------------|



OCWA Water Supply APE  
Figure 4B



Data source: Esri, NASA, NGA, USGS, FEMA, TomTom, Garmin, SafeGraph, GeoTechnologies, Inc, METI/NASA, USGS, EPA, NPS, US Census Bureau, USDA, USFWS

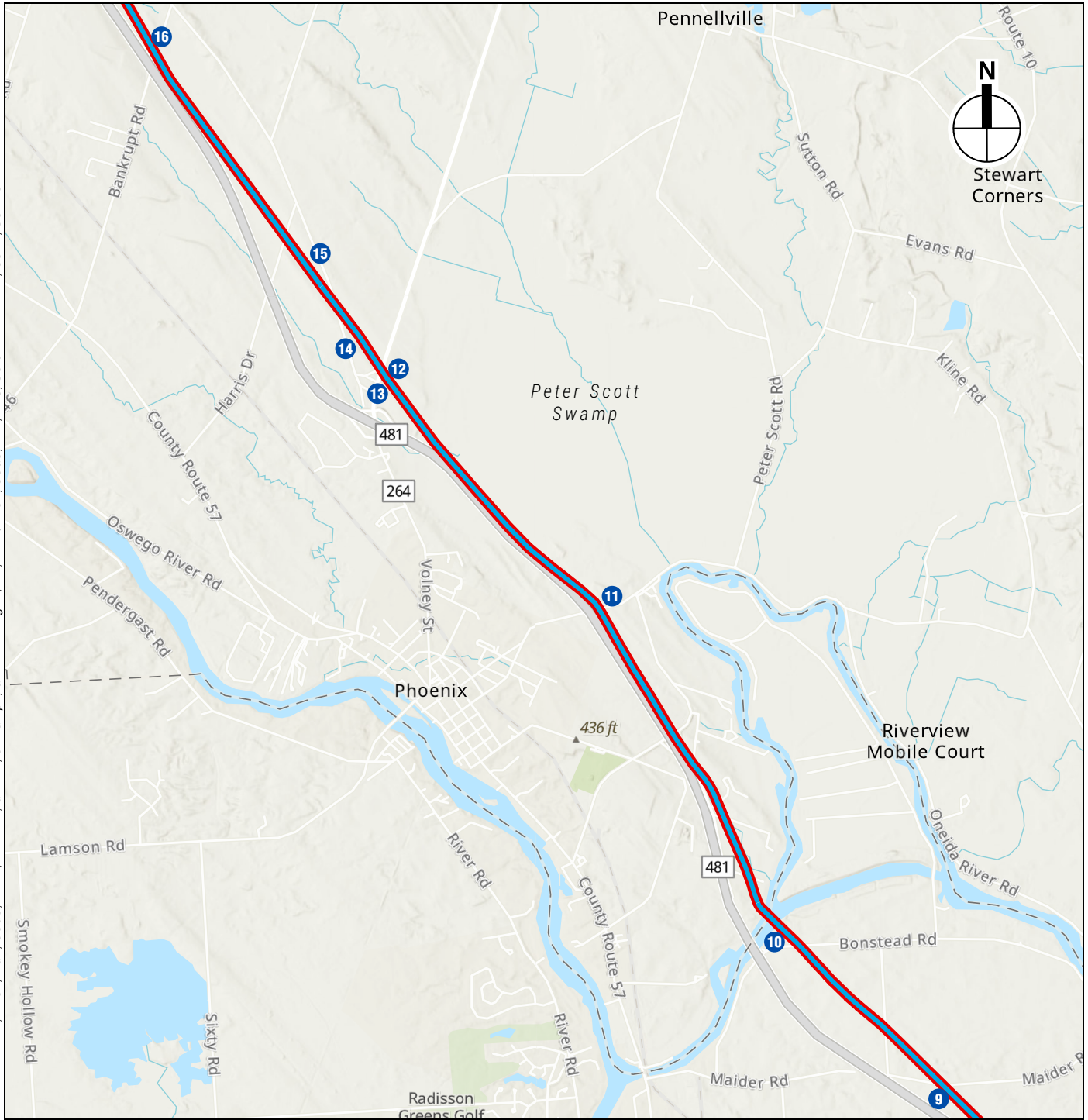
- Water Supply APE
- Sensitive for Precontact Archaeological Resources in Undisturbed Areas
- 1 Approximate Location of Map-Documented Structure (See Table 6-1)




0  1 Mile

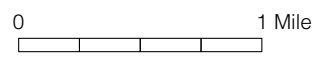


OCWA Water Supply APE  
Figure 4C

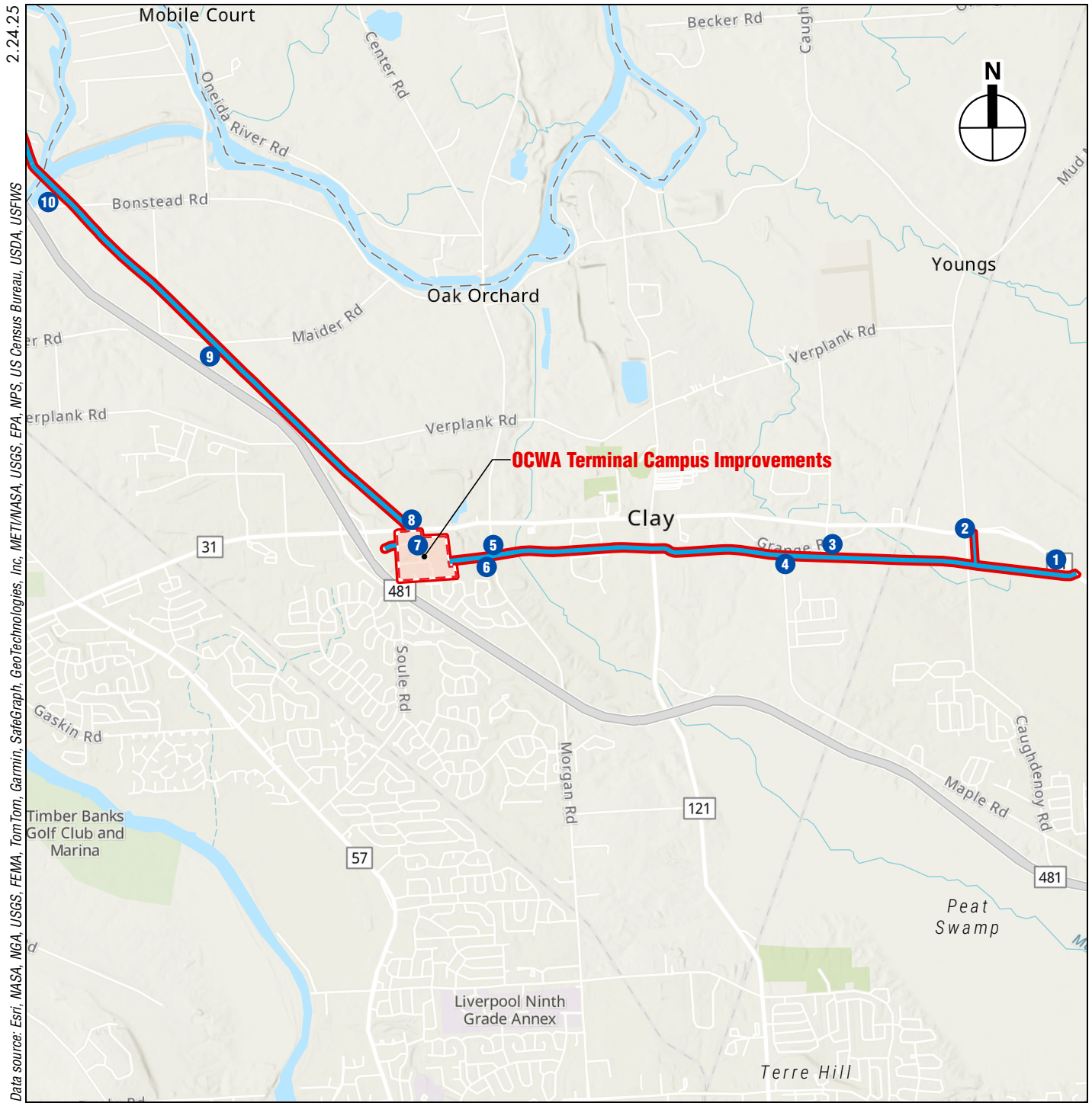
2.24.25  
Data source: Esri, NASA, NGA, USGS, FEMA, USGS, EPA, NPS, US Census Bureau, USDA, USFWS



-  Water Supply APE
-  Sensitive for Precontact Archaeological Resources in Undisturbed Areas
-  Approximate Location of Map-Documented Structure (See Table 6-1)



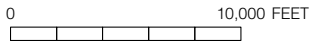
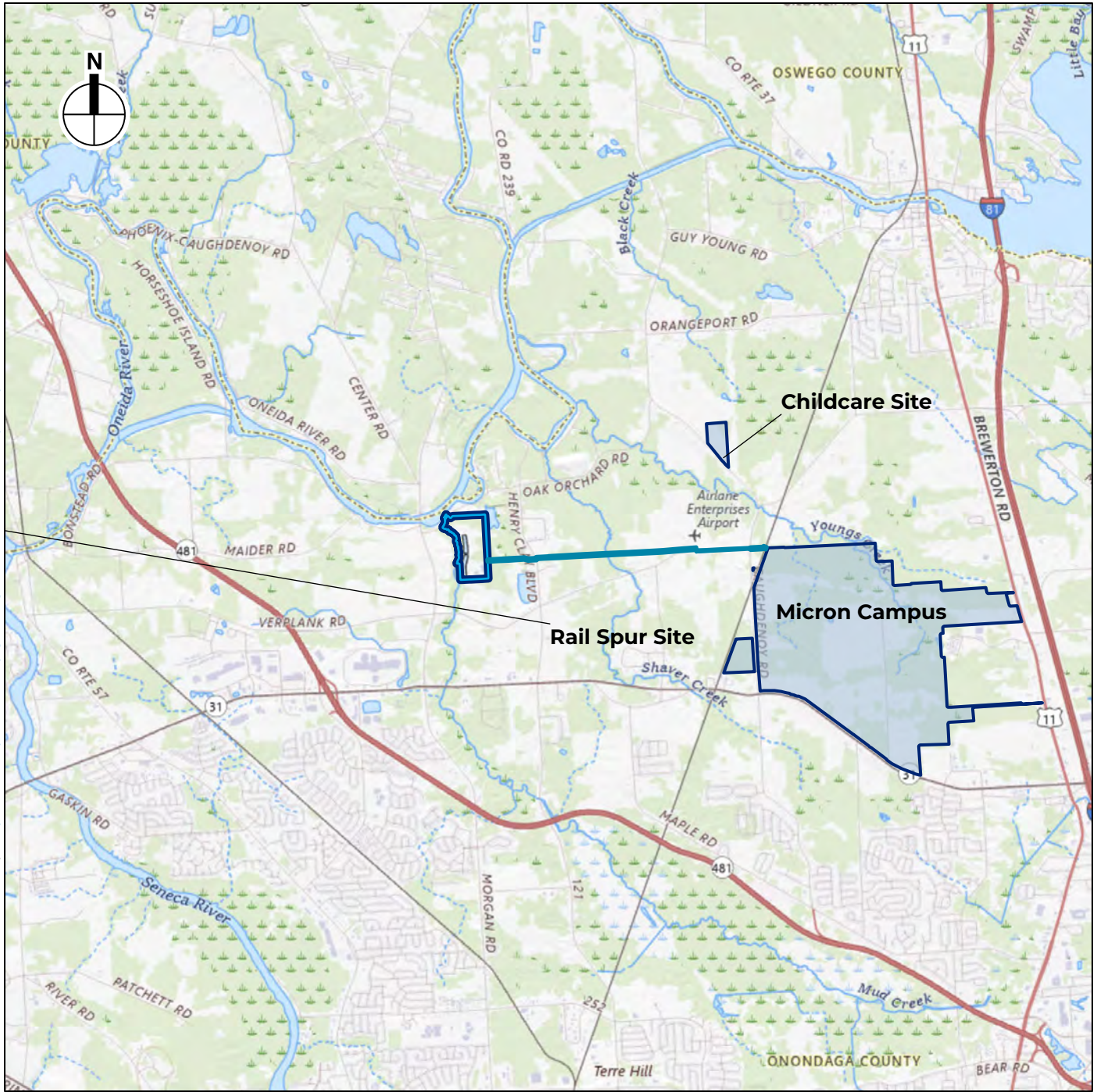
OCWA Water Supply APE  
Figure 4D



Data source: Esri, NASA, NGA, USGS, FEMA, USGS, EPA, NPS, US Census Bureau, USDA, USFWS, METI/NASA, USGS, EPA, NPS, US Census Bureau, USDA, USFWS



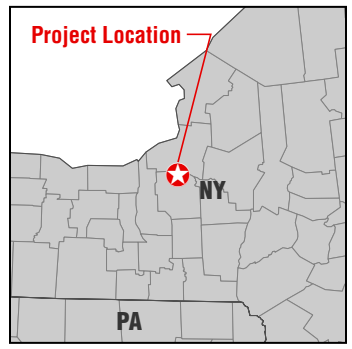
OCWA Water Supply APE  
Figure 4E



- Oak Orchard Site
- IWWTP at Oak Orchard APE
- Industrial Wastewater APE

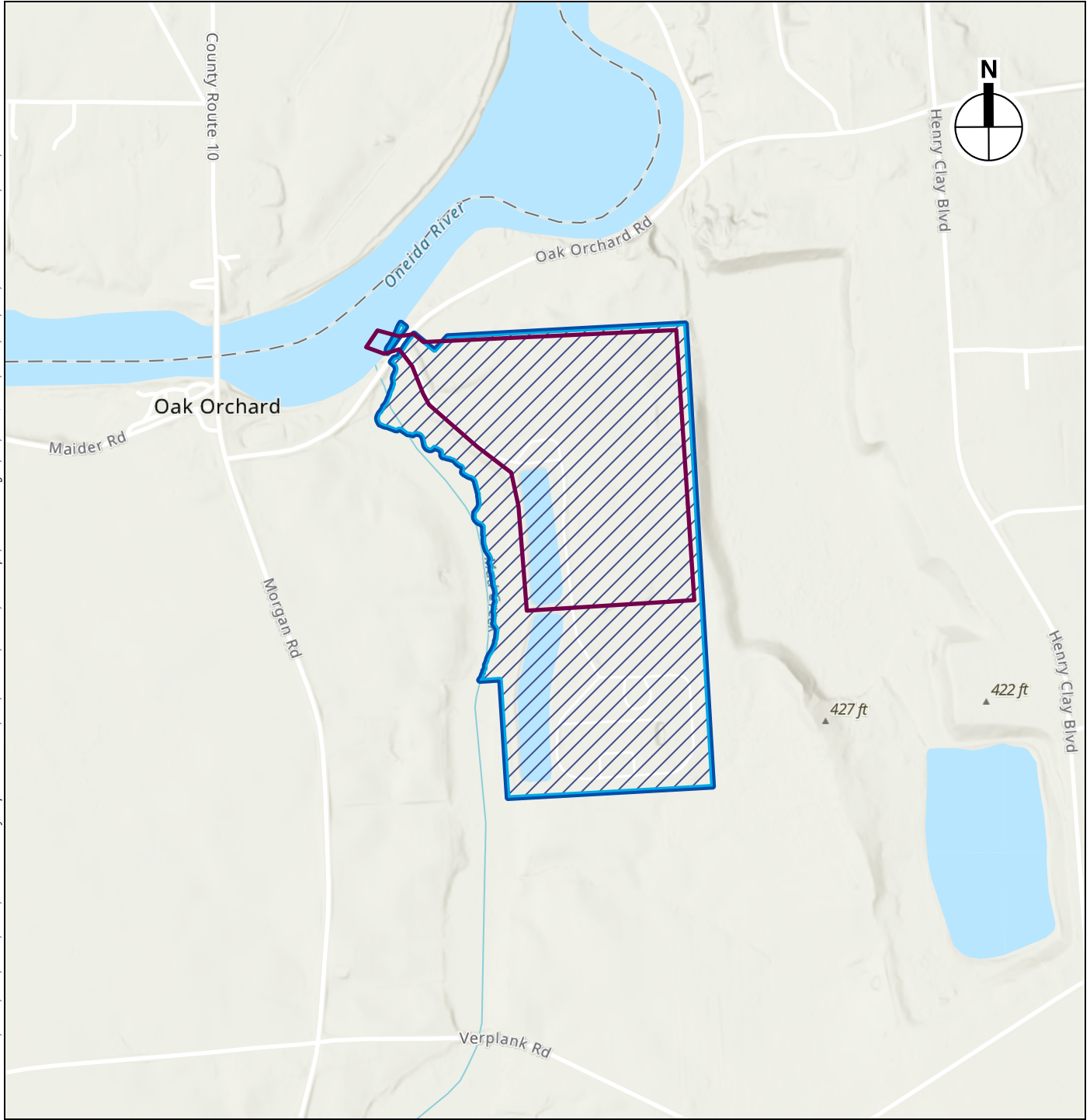
- Proposed Project
- Micron Campus
- Childcare Site
- Rail Spur Site





Approximate coordinates of Project Site:  
76°11'53"W 43°12'6"N



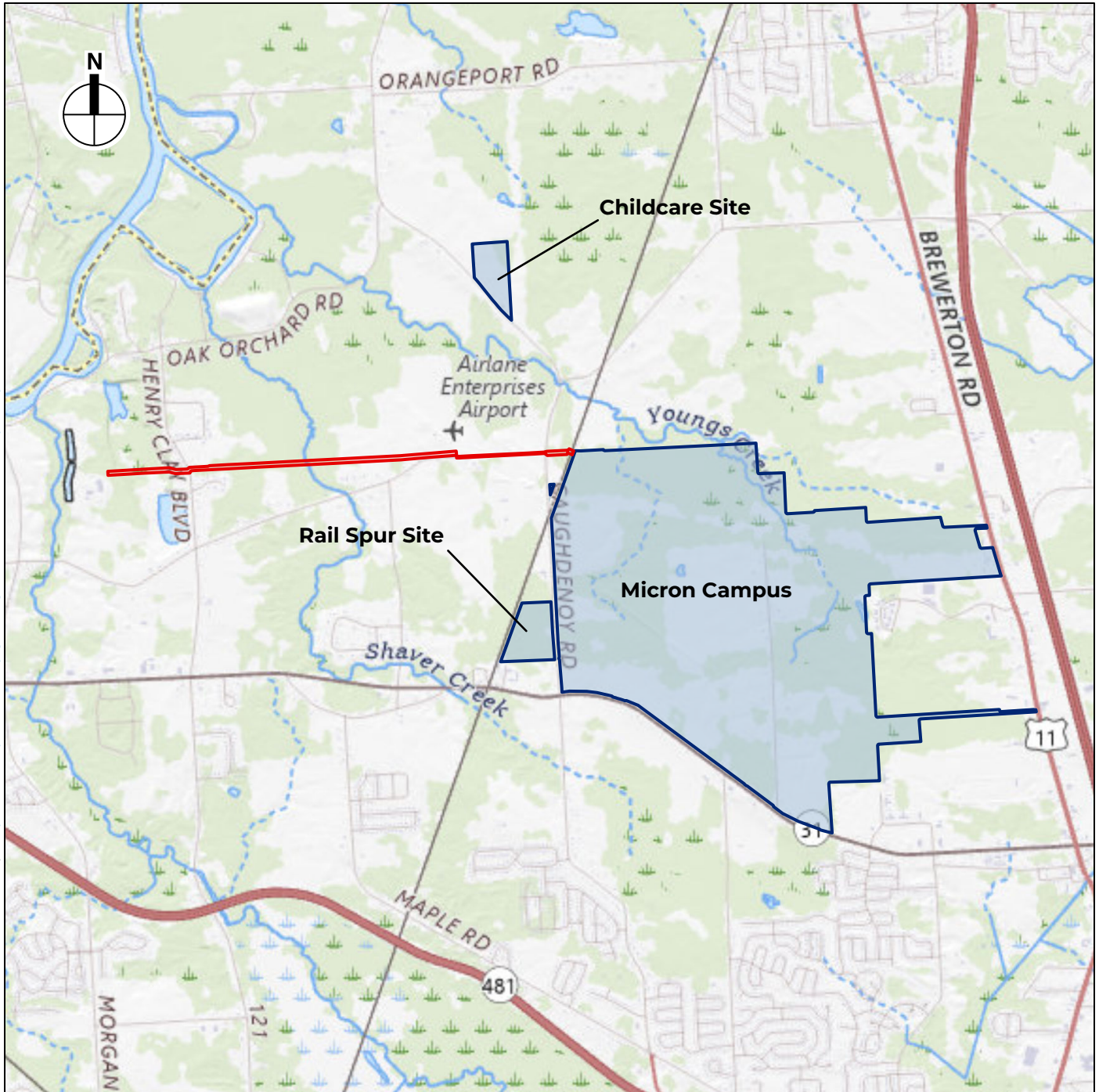
Wastewater Treatment Plant and Industrial Wastewater Conveyance APE

Figure 5

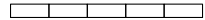


-  Oak Orchard Site
-  IWWTP at Oak Orchard APE
-  Proposed IWWTP Limits of Disturbance
-  Areas of Precontact Archaeological Sensitivity in Undisturbed Areas

0 1,000 FEET

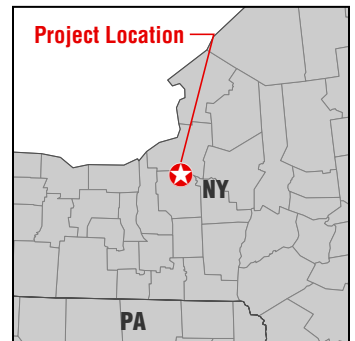


0 5,000 FEET



- Industrial Wastewater Conveyance APE
- Proposed Project
  - Micron Campus
  - Childcare Site
  - Rail Spur Site

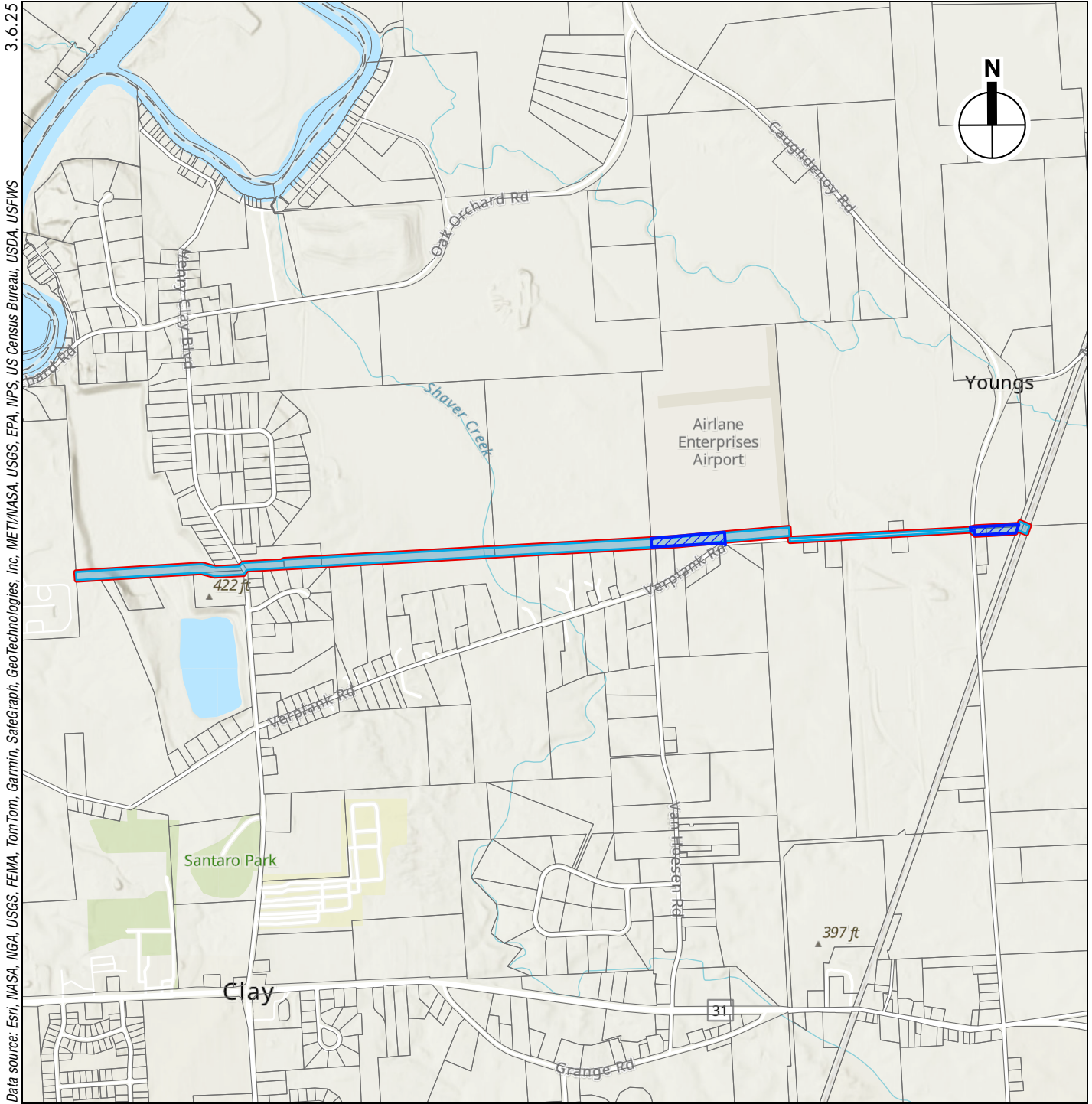
Approximate coordinates of Project Site:  
76°10'2"W 43°11'43"N



## Industrial Wastewater Conveyance APE

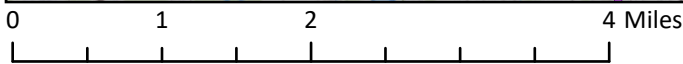
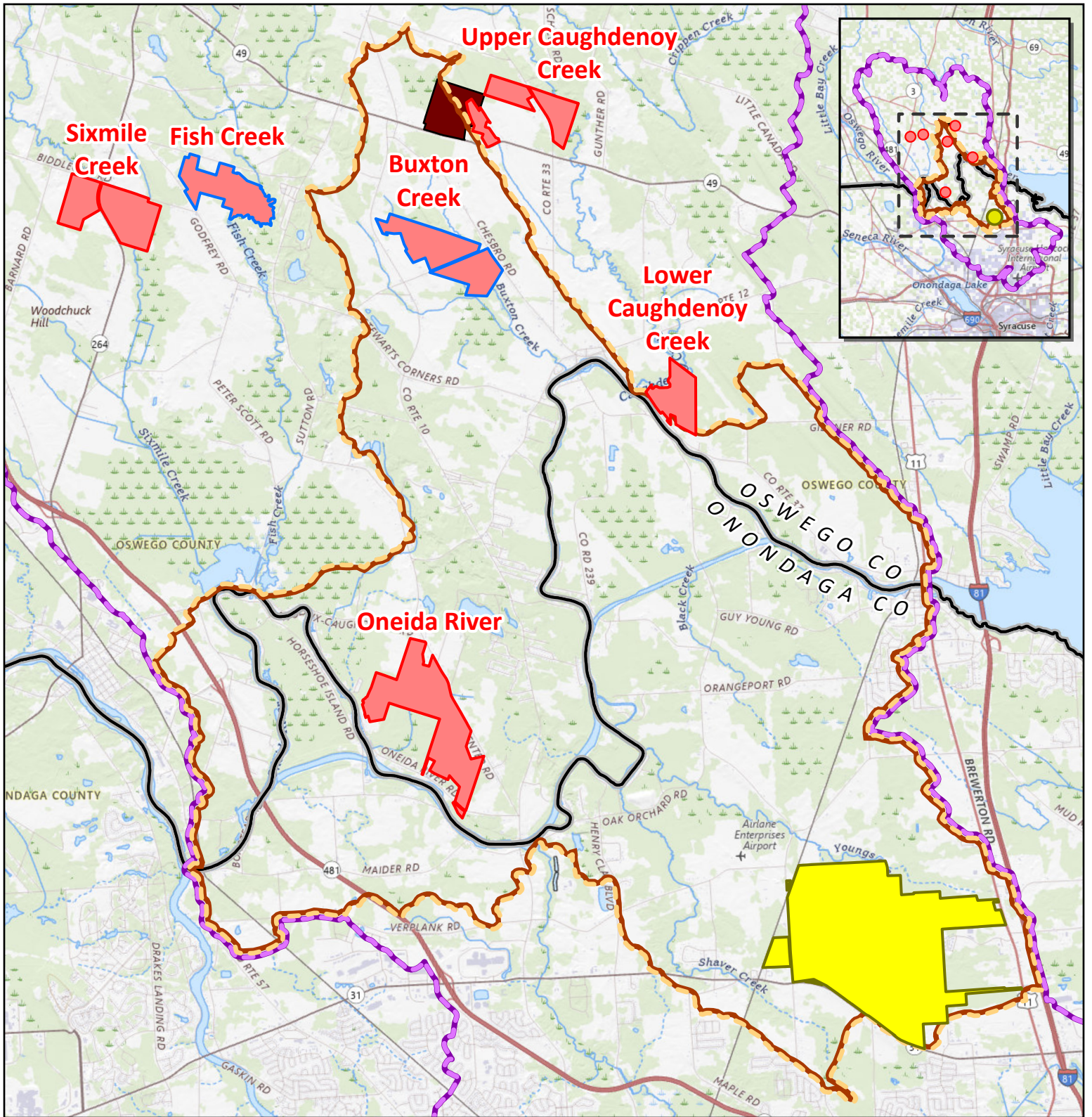
Figure 5B





- Industrial Wastewater Conveyance APE
- Areas of Elevated Historic Period Archaeological Sensitivity
- Areas of Precontact Archaeological Sensitivity in Undisturbed Areas

0 2,000 FEET



**Wetland and Stream Mitigation Sites APes**

- Wetland
- Wetland and Stream
- Wetland Mitigation Site Search Areas**
- 1: 12-Digit HUC (Oneida River 041402020905)
- 2: 10-Digit HUC (Oneida River 0414020209)
- Micron Site
- TWT Johnson Farm Preserve

**Wetland and Stream Mitigation Site Locations**

Towns of Hastings, Palermo and Schroepfel,  
Oswego County, NY

**Figure 6**